

Product datasheet for **TA364959**

RASGEF1A Rabbit Polyclonal Antibody

Product data:

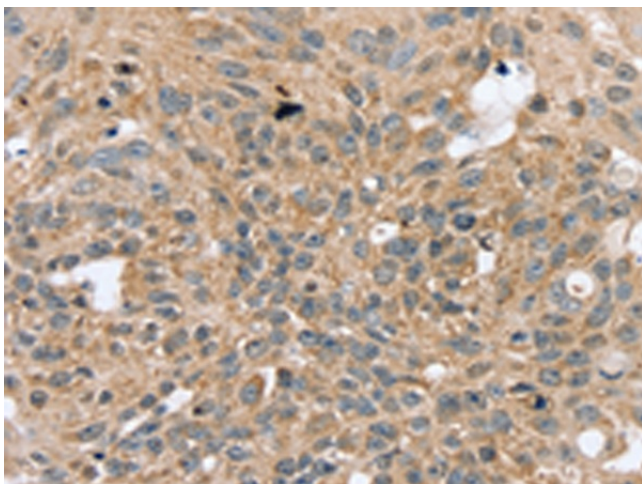
Product Type:	Primary Antibodies
Applications:	IHC
Recommended Dilution:	IHC: 20-100 Positive control: Human breast cancer Predicted cell location: Cytoplasm
Reactivity:	Human
Host:	Rabbit
Isotype:	IgG
Clonality:	Polyclonal
Immunogen:	Fusion protein of human RASGEF1A
Formulation:	pH7.4 PBS, 0.05% NaN ₃ , 40% Glycerol
Concentration:	lot specific
Purification:	Antigen affinity purification
Conjugation:	Unconjugated
Storage:	Store at -20°C.
Stability:	1 year
Gene Name:	RasGEF domain family member 1A
Database Link:	Entrez Gene 221002 Human Q8N9B8

Background: RASGEF1A (RasGEF domain family, member 1A) is a 481 amino acid guanine-nucleotide exchange factor (GEF) for H-Ras, K-Ras, and N-Ras. RASGEF1A may also play a role in cell migration. RASGEF1A is highly expressed in spinal chord and brain and contains one N-terminal Ras-GEF domain and one Ras-GEF domain. The gene that encodes RASGEF1A maps to human chromosome 10, which contains over 800 genes and 135 million nucleotides, making up nearly 4.5% of the human genome. PTEN is an important tumor suppressor gene located on chromosome 10 and, when defective, causes a genetic predisposition to cancer development known as Cowden syndrome.

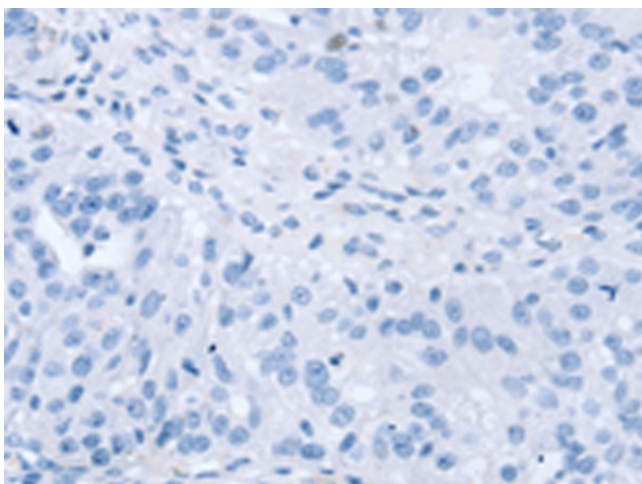
Synonyms: CG4853; FLJ37817; OTTHUMP00000195167



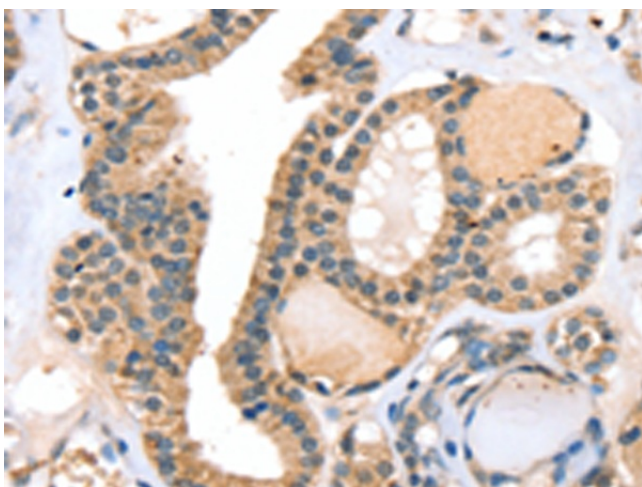
[View online »](#)

Product images:

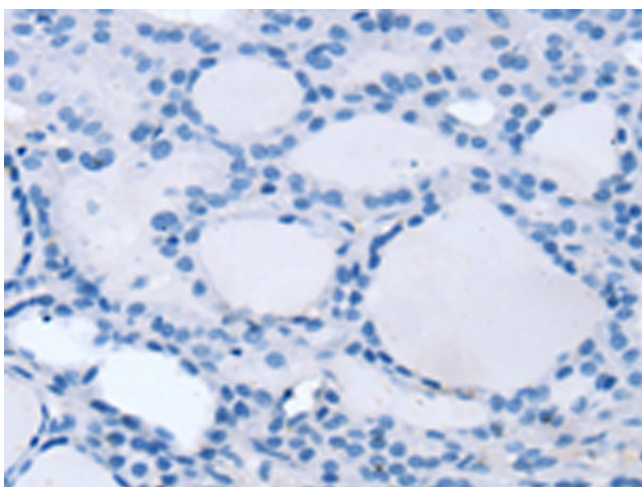
Immunohistochemistry of paraffin-embedded Human breast cancer tissue using TA364959 (RASGEF1A Antibody) at dilution 1/20 (Original magnification: ×200)



Immunohistochemistry of paraffin-embedded Human breast cancer tissue using TA364959 (RASGEF1A Antibody) at dilution 1/20, treated with fusion protein. (Original magnification: ×200)



Immunohistochemistry of paraffin-embedded Human thyroid cancer tissue using TA364959 (RASGEF1A Antibody) at dilution 1/20 (Original magnification: ×200)



Immunohistochemistry of paraffin-embedded Human thyroid cancer tissue using TA364959 (RASGEF1A Antibody) at dilution 1/20, treated with fusion protein. (Original magnification: ×200)