

## Product datasheet for **TA364955S**

### RAE1 Rabbit Polyclonal Antibody

#### Product data:

|                         |   |
|-------------------------|---|
| Product Type:           | Primary Antibodies  |
| Applications:           | IHC, WB   |
| Recommended Dilution:   | WB: 1000-5000<br>WB positive control: HepG2, Jurkat cell, Mouse brain tissue, Human cerebrum tissue lysates<br>IHC: 150-300<br>Positive control: Human esophagus cancer<br>Predicted cell location: Nucleus |
| Reactivity:             | Human, Mouse, Rat   |
| Host:                   | Rabbit  |
| Isotype:                | IgG   |
| Clonality:              | Polyclonal  |
| Immunogen:              | Fusion protein of human RAE1  |
| Formulation:            | pH7.4 PBS, 0.05% NaN <sub>3</sub> , 40% Glycerol  |
| Purification:           | Antigen affinity purification   |
| Conjugation:            | Unconjugated  |
| Storage:                | Store at -20°C.   |
| Stability:              | 1 year  |
| Predicted Protein Size: | 41 kDa  |
| Gene Name:              | ribonucleic acid export 1   |
| Database Link:          | <a href="#">Entrez Gene 8480 Human P78406</a>   |



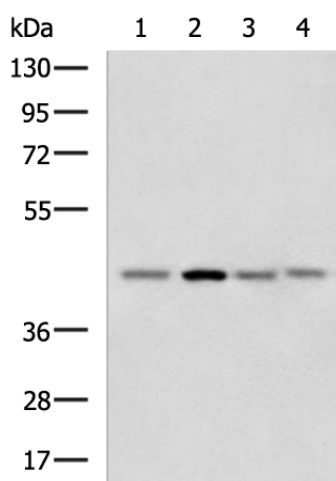
[View online »](#)

**Background:**

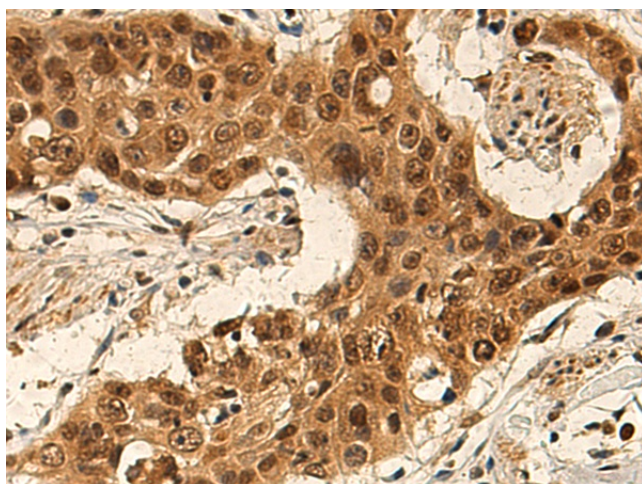
Mutations in the *Schizosaccharomyces pombe* Rae1 and *Saccharomyces cerevisiae* Gle2 genes have been shown to result in accumulation of poly(A)-containing mRNA in the nucleus, suggesting that the encoded proteins are involved in RNA export. The protein encoded by this gene is a homolog of yeast Rae1. It contains four WD40 motifs, and has been shown to localize to distinct foci in the nucleoplasm, to the nuclear rim, and to meshwork-like structures throughout the cytoplasm. This gene is thought to be involved in nucleocytoplasmic transport, and in directly or indirectly attaching cytoplasmic mRNPs to the cytoskeleton. Alternatively spliced transcript variants encoding the same protein have been found for this gene.

**Synonyms:**

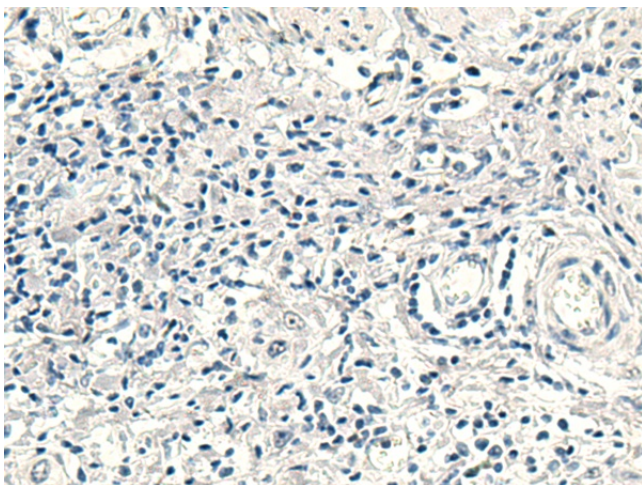
dJ481F12.3; dJ800J21.1; FLJ30608; MGC117333; MGC126076; MGC126077; MIG14; Mnrp41; MRNP41; OTTHUMP00000166110

**Product images:**


Gel: 8%SDS-PAGE  
 Lysate: 40 µg  
 Lane 1-4: HepG2  
 Jurkat cell  
 Mouse brain tissue  
 Human cerebrum tissue lysates  
 Primary antibody: [TA364955] (RAE1 Antibody) at dilution 1/1000  
 Secondary antibody: Goat anti rabbit IgG at 1/5000 dilution  
 Exposure time: 1 minute



Immunohistochemistry of paraffin-embedded Human esophagus cancer tissue using [TA364955] (RAE1 Antibody) at dilution 1/140 (Original magnification: ×200)



Immunohistochemistry of paraffin-embedded Human esophagus cancer tissue using [TA364955] (RAE1 Antibody) at dilution 1/140, treated with fusion protein. (Original magnification:  $\times 200$ )