

Product datasheet for **TA364955**

RAE1 Rabbit Polyclonal Antibody

Product data:

Product Type:	Primary Antibodies
Applications:	IHC, WB
Recommended Dilution:	WB: 1000-5000 WB positive control: HepG2, Jurkat cell, Mouse brain tissue, Human cerebrum tissue lysates IHC: 150-300 Positive control: Human esophagus cancer Predicted cell location: Nucleus
Reactivity:	Human, Mouse, Rat
Host:	Rabbit
Isotype:	IgG
Clonality:	Polyclonal
Immunogen:	Fusion protein of human RAE1
Formulation:	pH7.4 PBS, 0.05% NaN ₃ , 40% Glycerol
Concentration:	lot specific
Purification:	Antigen affinity purification
Conjugation:	Unconjugated
Storage:	Store at -20°C.
Stability:	1 year
Predicted Protein Size:	41 kDa
Gene Name:	ribonucleic acid export 1
Database Link:	Entrez Gene 8480 Human P78406



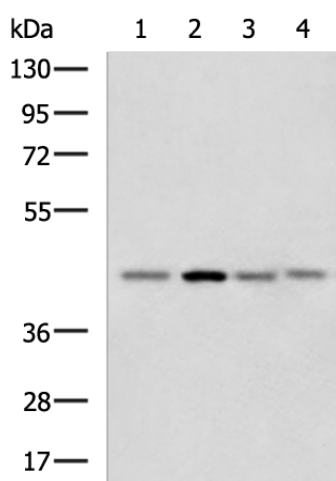
[View online »](#)

Background:

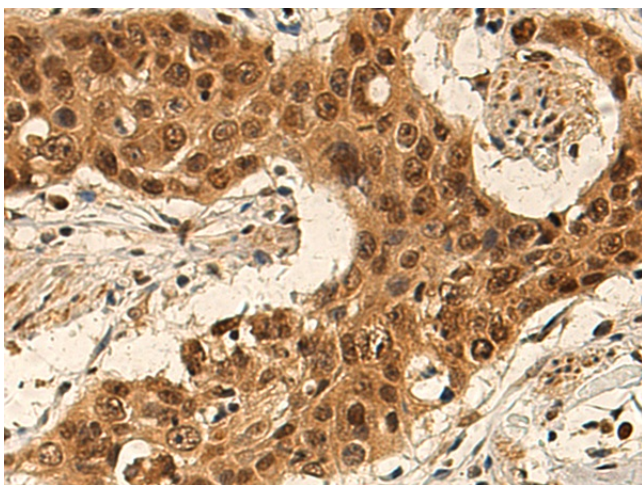
Mutations in the *Schizosaccharomyces pombe* Rae1 and *Saccharomyces cerevisiae* Gle2 genes have been shown to result in accumulation of poly(A)-containing mRNA in the nucleus, suggesting that the encoded proteins are involved in RNA export. The protein encoded by this gene is a homolog of yeast Rae1. It contains four WD40 motifs, and has been shown to localize to distinct foci in the nucleoplasm, to the nuclear rim, and to meshwork-like structures throughout the cytoplasm. This gene is thought to be involved in nucleocytoplasmic transport, and in directly or indirectly attaching cytoplasmic mRNPs to the cytoskeleton. Alternatively spliced transcript variants encoding the same protein have been found for this gene.

Synonyms:

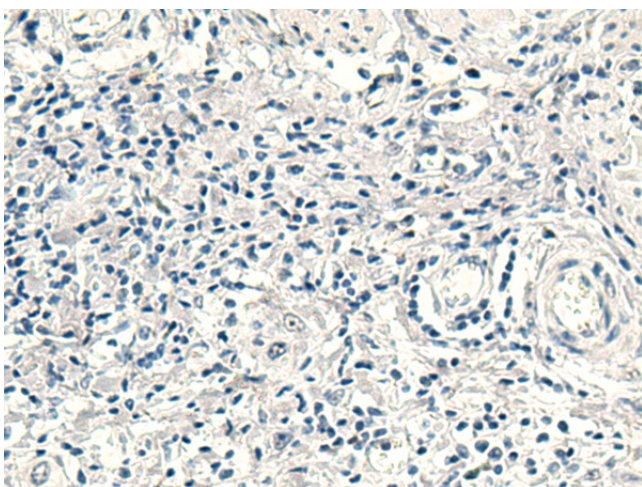
dj481F12.3; dj800J21.1; FLJ30608; MGC117333; MGC126076; MGC126077; MIG14; Mnrp41; MRNP41; OTTHUMP00000166110

Product images:

Gel: 8%SDS-PAGE
Lysate: 40 µg
Lane 1-4: HepG2
Jurkat cell
Mouse brain tissue
Human cerebrum tissue lysates
Primary antibody: TA364955 (RAE1 Antibody) at dilution 1/1000
Secondary antibody: Goat anti rabbit IgG at 1/5000 dilution
Exposure time: 1 minute



Immunohistochemistry of paraffin-embedded Human esophagus cancer tissue using TA364955 (RAE1 Antibody) at dilution 1/140 (Original magnification: ×200)



Immunohistochemistry of paraffin-embedded Human esophagus cancer tissue using TA364955 (RAE1 Antibody) at dilution 1/140, treated with fusion protein. (Original magnification: $\times 200$)