

## Product datasheet for **TA364950**

### **RAB3A Rabbit Polyclonal Antibody**

#### **Product data:**

Product Type:	Primary Antibodies
Applications:	WB
Recommended Dilution:	WB: 500-2000 WB positive control: Human cerebella tissue, Human cerebrum tissue and Mouse brain tissue lysates
Reactivity:	Human, Mouse, Rat
Host:	Rabbit
Isotype:	IgG
Clonality:	Polyclonal
Immunogen:	Fusion protein of human RAB3A
Formulation:	pH7.4 PBS, 0.05% NaN <sub>3</sub> , 40% Glycerol
Concentration:	lot specific
Purification:	Antigen affinity purification
Conjugation:	Unconjugated
Storage:	Store at -20°C.
Stability:	1 year
Predicted Protein Size:	25 kDa
Gene Name:	RAB3A, member RAS oncogene family
Database Link:	<a href="#">Entrez Gene 5864 Human P20336</a>



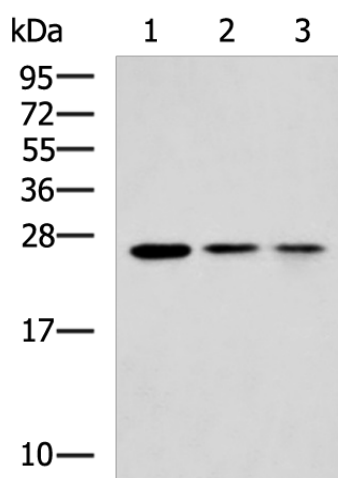
[View online »](#)

**Background:**

Small GTP-binding protein that plays a central role in regulated exocytosis and secretion. Controls the recruitment, tethering and docking of secretory vesicles to the plasma membrane. Upon stimulation, switches to its active GTP-bound form, cycles to vesicles and recruits effectors such as RIMS1, RIMS2, Rabphilin-3A/RPH3A, RPH3AL or SYTL4 to help the docking of vesicles onto the plasma membrane. Upon GTP hydrolysis by GTPase-activating protein, dissociates from the vesicle membrane allowing the exocytosis to proceed. Stimulates insulin secretion through interaction with RIMS2 or RPH3AL effectors in pancreatic beta cells. Regulates calcium-dependent lysosome exocytosis and plasma membrane repair (PMR) via the interaction with 2 effectors, SYTL4 and myosin-9/MYH9. Acts as a positive regulator of acrosome content secretion in sperm cells by interacting with RIMS1. Plays also a role in the regulation of dopamine release by interacting with synaptotagmin I/SYT.

**Synonyms:**

RAB3A

**Product images:**

Gel: 12%SDS-PAGE

Lysate: 40 µg

Lane 1-3: Human cerebella tissue

Human cerebrum tissue and Mouse brain tissue lysates

Primary antibody: TA364950 (RAB3A Antibody) at dilution 1/900

Secondary antibody: Goat anti rabbit IgG at 1/5000 dilution

Exposure time: 30 seconds