

Product datasheet for **TA364948S**

Quiescin Q6 (QSOX1) Rabbit Polyclonal Antibody

Product data:

Product Type:	Primary Antibodies
Applications:	IHC, WB
Recommended Dilution:	WB: 200-1000 WB positive control: 293T,Hela and 231 cell lysates IHC: 25-100 Positive control: Human cervical cancer Predicted cell location: Cytoplasm and Cell membrane
Reactivity:	Human
Host:	Rabbit
Isotype:	IgG
Clonality:	Polyclonal
Immunogen:	Fusion protein of human QSOX1
Formulation:	pH7.4 PBS, 0.05% NaN ₃ , 40% Glycerol
Purification:	Antigen affinity purification
Conjugation:	Unconjugated
Storage:	Store at -20°C.
Stability:	1 year
Predicted Protein Size:	83 kDa
Gene Name:	quiescin sulfhydryl oxidase 1
Database Link:	Entrez Gene 5768 Human Q00391

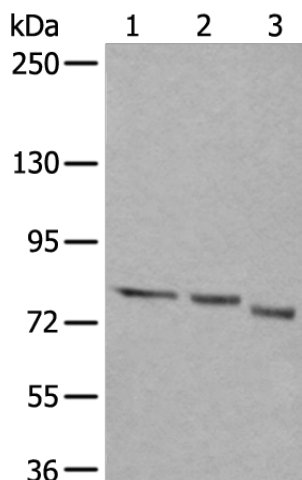
Background: This gene encodes a protein that contains domains of thioredoxin and ERV1, members of two long-standing gene families. The gene expression is induced as fibroblasts begin to exit the proliferative cycle and enter quiescence, suggesting that this gene plays an important role in growth regulation. Two transcript variants encoding two different isoforms have been found for this gene.

Synonyms: FLJ34858; hQSOX; Q6; QSCN6

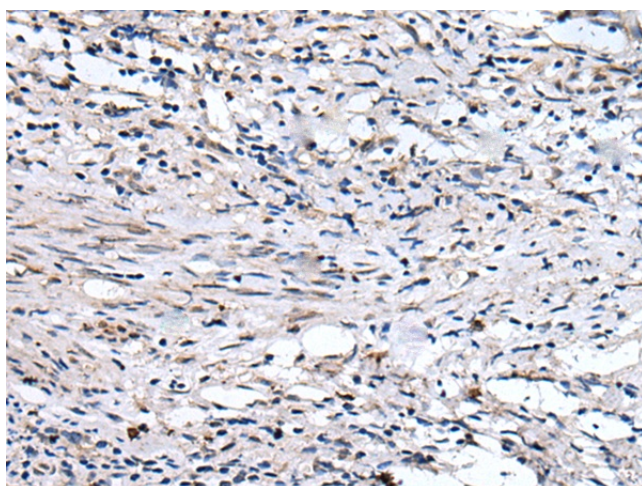


[View online »](#)

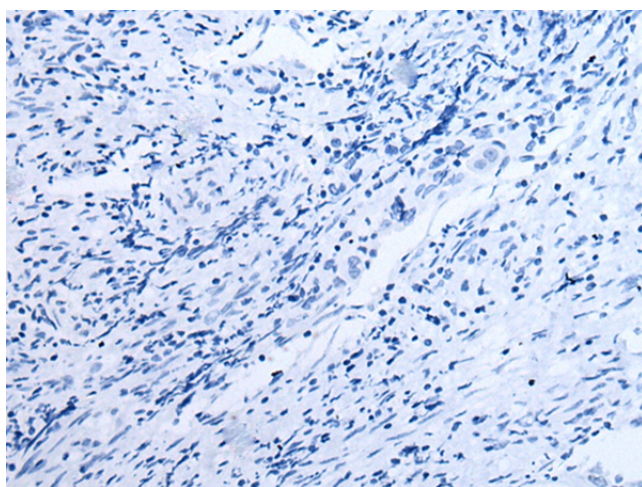
Product images:



Gel: 6%SDS-PAGE
 Lysate: 40 µg
 Lane 1-3: 293T
 HeLa and 231 cell lysates
 Primary antibody: [TA364948] (QSOX1 Antibody)
 at dilution 1/350
 Secondary antibody: Goat anti rabbit IgG at
 1/8000 dilution
 Exposure time: 40 seconds



Immunohistochemistry of paraffin-embedded
 Human cervical cancer tissue using [TA364948]
 (QSOX1 Antibody) at dilution 1/35 (Original
 magnification: ×200)



Immunohistochemistry of paraffin-embedded
 Human cervical cancer tissue using [TA364948]
 (QSOX1 Antibody) at dilution 1/35, treated with
 fusion protein. (Original magnification: ×200)