

Product datasheet for **TA364948**

Quiescin Q6 (QSOX1) Rabbit Polyclonal Antibody

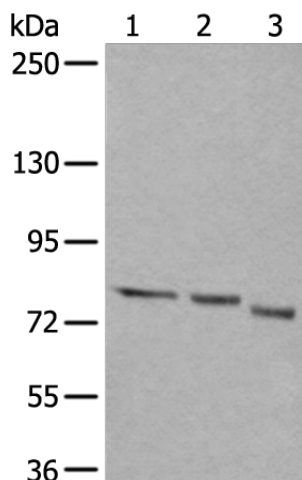
Product data:

Product Type:	Primary Antibodies
Applications:	IHC, WB
Recommended Dilution:	WB: 200-1000 WB positive control: 293T,Hela and 231 cell lysates IHC: 25-100 Positive control: Human cervical cancer Predicted cell location: Cytoplasm and Cell membrane
Reactivity:	Human
Host:	Rabbit
Isotype:	IgG
Clonality:	Polyclonal
Immunogen:	Fusion protein of human QSOX1
Formulation:	pH7.4 PBS, 0.05% NaN ₃ , 40% Glycerol
Concentration:	lot specific
Purification:	Antigen affinity purification
Conjugation:	Unconjugated
Storage:	Store at -20°C.
Stability:	1 year
Predicted Protein Size:	83 kDa
Gene Name:	quiescin sulfhydryl oxidase 1
Database Link:	Entrez Gene 5768 Human Q00391
Background:	This gene encodes a protein that contains domains of thioredoxin and ERV1, members of two long-standing gene families. The gene expression is induced as fibroblasts begin to exit the proliferative cycle and enter quiescence, suggesting that this gene plays an important role in growth regulation. Two transcript variants encoding two different isoforms have been found for this gene.
Synonyms:	FLJ34858; hQSOX; Q6; QSCN6

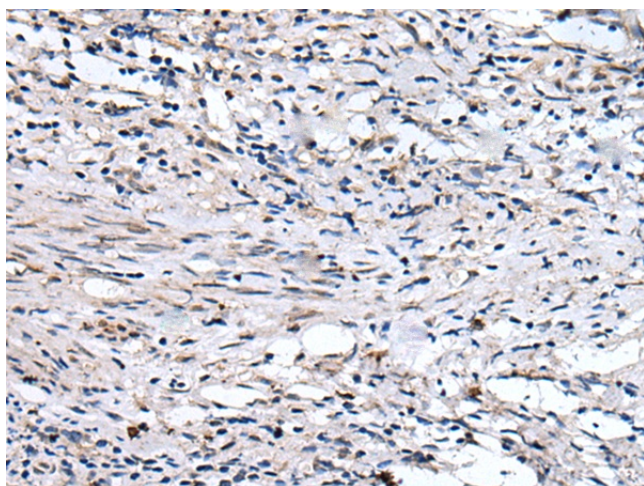


[View online »](#)

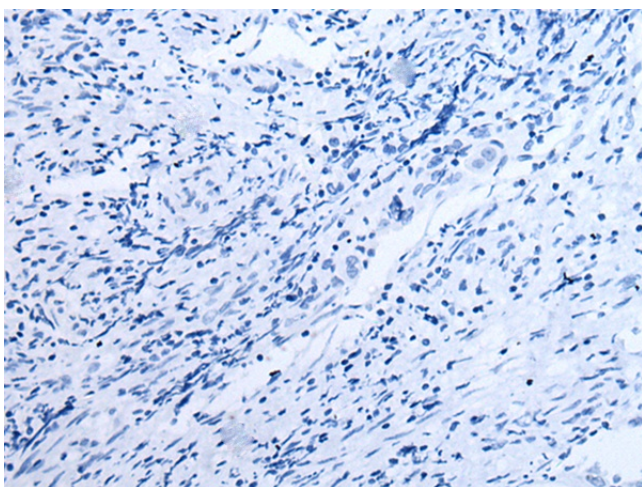
Product images:



Gel: 6%SDS-PAGE
Lysate: 40 μ g
Lane 1-3: 293T
Hela and 231 cell lysates
Primary antibody: TA364948 (QSOX1 Antibody) at dilution 1/350
Secondary antibody: Goat anti rabbit IgG at 1/8000 dilution
Exposure time: 40 seconds



Immunohistochemistry of paraffin-embedded Human cervical cancer tissue using TA364948 (QSOX1 Antibody) at dilution 1/35 (Original magnification: \times 200)



Immunohistochemistry of paraffin-embedded Human cervical cancer tissue using TA364948 (QSOX1 Antibody) at dilution 1/35, treated with fusion protein. (Original magnification: ×200)