

## Product datasheet for **TA364947S**

### **PYGM Rabbit Polyclonal Antibody**

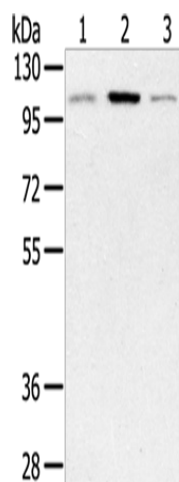
#### **Product data:**

Product Type:	Primary Antibodies
Applications:	WB
Recommended Dilution:	WB: 200-1000 WB positive control: Human fetal muscle tissue, mouse brain and heart tissue
Reactivity:	Human, Mouse, Rat
Host:	Rabbit
Isotype:	IgG
Clonality:	Polyclonal
Immunogen:	Fusion protein of human PYGM
Formulation:	pH7.4 PBS, 0.05% NaN <sub>3</sub> , 40% Glycerol
Purification:	Antigen affinity purification
Conjugation:	Unconjugated
Storage:	Store at -20°C.
Stability:	1 year
Predicted Protein Size:	97 kDa
Gene Name:	phosphorylase, glycogen, muscle
Database Link:	<a href="#">Entrez Gene 5837 Human P11217</a>
Background:	This gene encodes a muscle enzyme involved in glycogenolysis. Highly similar enzymes encoded by different genes are found in liver and brain. Mutations in this gene are associated with McArdle disease (myophosphorylase deficiency), a glycogen storage disease of muscle. Alternative splicing results in multiple transcript variants.
Synonyms:	myophosphorylase



[View online »](#)

## Product images:



Gel: 8%SDS-PAGE

Lysate: 40  $\mu$ g

Lane 1-3: Human fetal muscle tissue  
mouse brain tissue

Mouse heart tissue

Primary antibody: [TA364947] (PYGM Antibody) at  
dilution 1/450

Secondary antibody: Goat anti rabbit IgG at  
1/8000 dilution

Exposure time: 40 seconds