

Product datasheet for **TA364941**

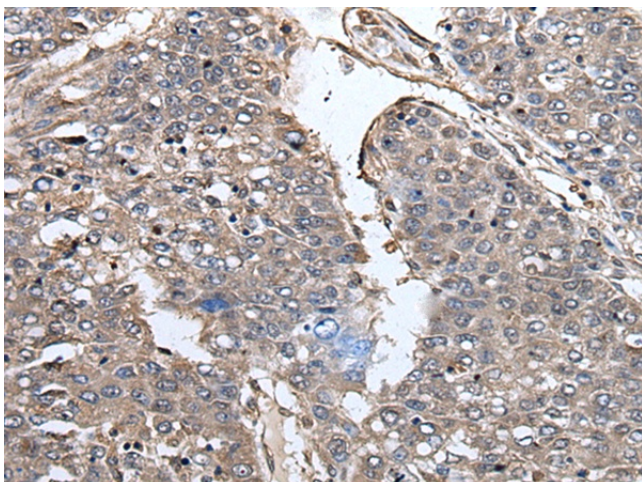
PRUNE (PRUNE1) Rabbit Polyclonal Antibody

Product data:

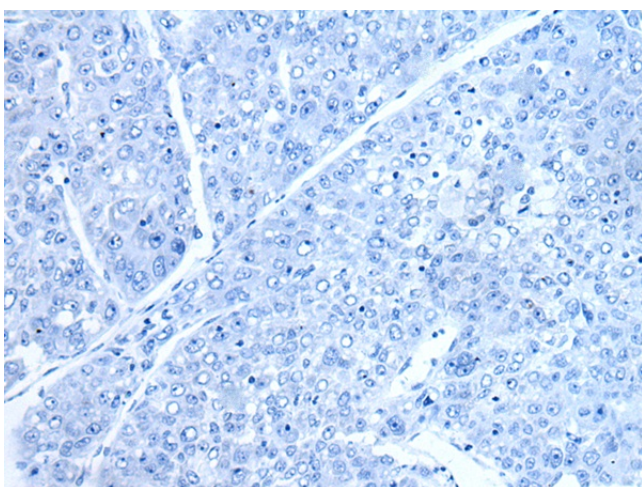
Product Type:	Primary Antibodies
Applications:	IHC
Recommended Dilution:	IHC: 30-150 Positive control: Human liver cancer Predicted cell location: Cytoplasm or Nucleus
Reactivity:	Human
Host:	Rabbit
Isotype:	IgG
Clonality:	Polyclonal
Immunogen:	Fusion protein of human PRUNE1
Formulation:	pH7.4 PBS, 0.05% NaN ₃ , 40% Glycerol
Concentration:	lot specific
Purification:	Antigen affinity purification
Conjugation:	Unconjugated
Storage:	Store at -20°C.
Stability:	1 year
Gene Name:	prune exopolyphosphatase
Database Link:	Entrez Gene 58497 Human Q86TP1
Background:	This gene encodes a member of the DHH protein superfamily of phosphoesterases. This protein has been found to function as both a nucleotide phosphodiesterase and an exopolyphosphatase. This protein is believed to stimulate cancer progression and metastases through the induction of cell motility. A pseudogene has been identified on chromosome 13. Alternative splicing results in multiple transcript variants. [provided by RefSeq, Dec 2014]
Synonyms:	DRES-17; DRES17; hPrune; HTCD37



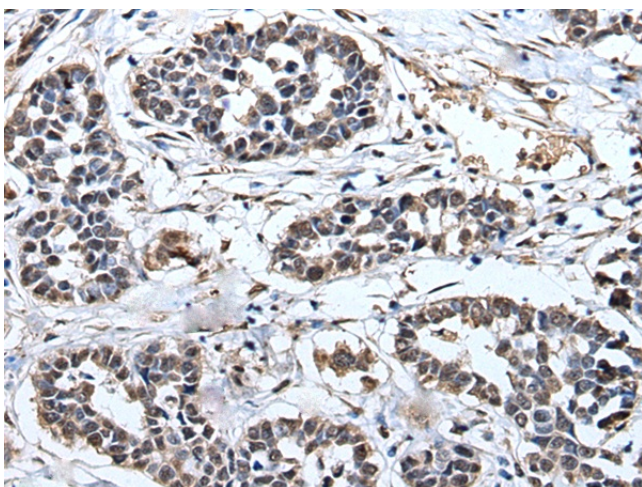
[View online »](#)

Product images:

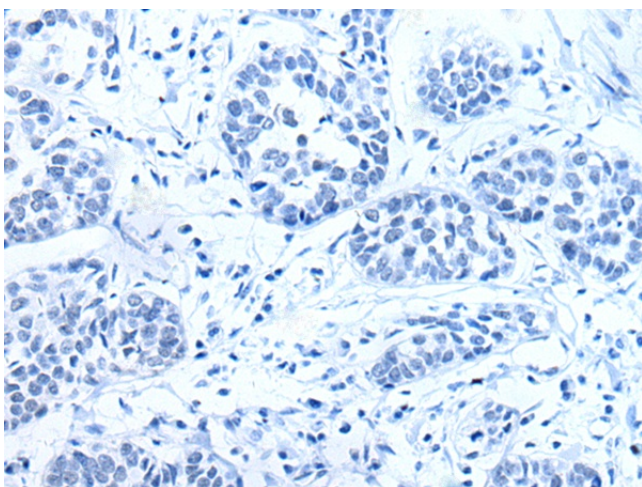
Immunohistochemistry of paraffin-embedded Human liver cancer tissue using TA364941 (PRUNE1 Antibody) at dilution 1/40 (Original magnification: $\times 200$)



Immunohistochemistry of paraffin-embedded Human liver cancer tissue using TA364941 (PRUNE1 Antibody) at dilution 1/40, treated with fusion protein. (Original magnification: $\times 200$)



Immunohistochemistry of paraffin-embedded Human esophagus cancer tissue using TA364941 (PRUNE1 Antibody) at dilution 1/40 (Original magnification: $\times 200$)



Immunohistochemistry of paraffin-embedded Human esophagus cancer tissue using TA364941 (PRUNE1 Antibody) at dilution 1/40, treated with fusion protein. (Original magnification: $\times 200$)