

Product datasheet for **TA364936**

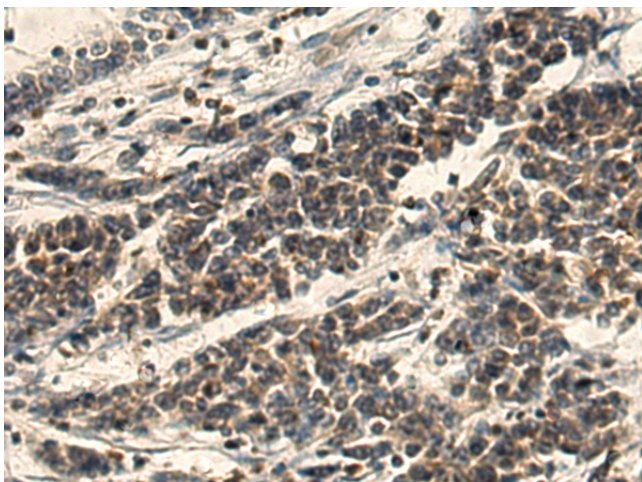
PRAS40 (AKT1S1) Rabbit Polyclonal Antibody

Product data:

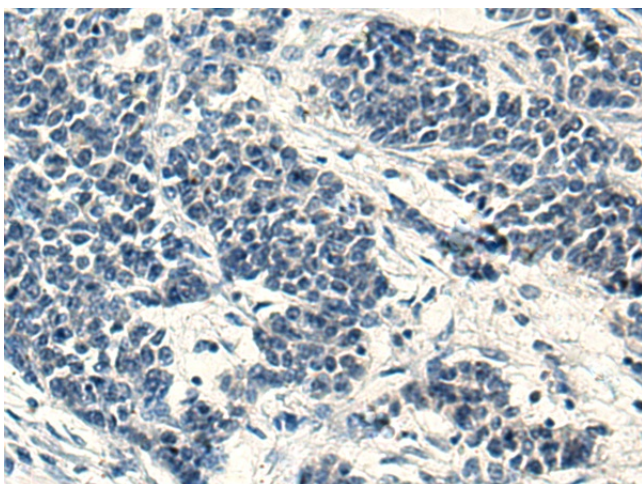
Product Type:	Primary Antibodies
Applications:	IHC
Recommended Dilution:	IHC: 150-300 Positive control: Human colorectal cancer Predicted cell location: Cytoplasm
Reactivity:	Human, Mouse
Host:	Rabbit
Isotype:	IgG
Clonality:	Polyclonal
Immunogen:	Fusion protein of human AKT1S1
Formulation:	pH7.4 PBS, 0.05% NaN ₃ , 40% Glycerol
Concentration:	lot specific
Purification:	Antigen affinity purification
Conjugation:	Unconjugated
Storage:	Store at -20°C.
Stability:	1 year
Gene Name:	AKT1 substrate 1
Database Link:	Entrez Gene 84335 Human Q96B36
Background:	AKT1S1 is a proline-rich substrate of AKT (MIM 164730) that binds 14-3-3 protein (see YWHAH, MIM 113508) when phosphorylated (Kovacina et al., 2003 [PubMed 12524439]).
Synonyms:	Lobe; MGC2865; OTTHUMP00000196759; OTTHUMP00000196760; PRAS40



[View online »](#)

Product images:

Immunohistochemistry of paraffin-embedded Human colorectal cancer tissue using TA364936 (AKT1S1 Antibody) at dilution 1/150 (Original magnification: $\times 200$)



Immunohistochemistry of paraffin-embedded Human colorectal cancer tissue using TA364936 (AKT1S1 Antibody) at dilution 1/150, treated with fusion protein. (Original magnification: $\times 200$)