

Product datasheet for **TA364934**

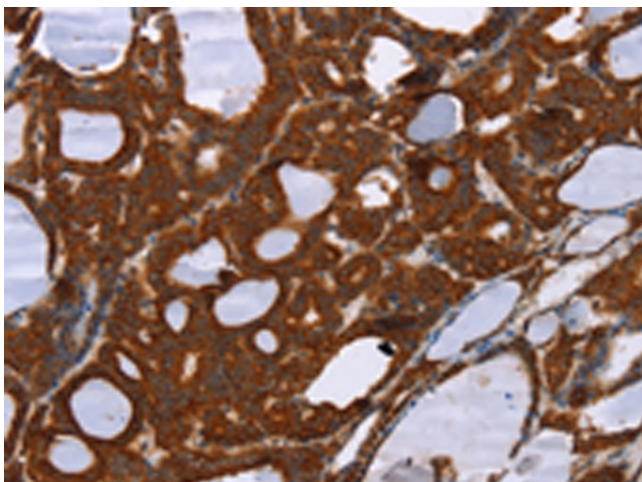
PPP2R3C Rabbit Polyclonal Antibody

Product data:

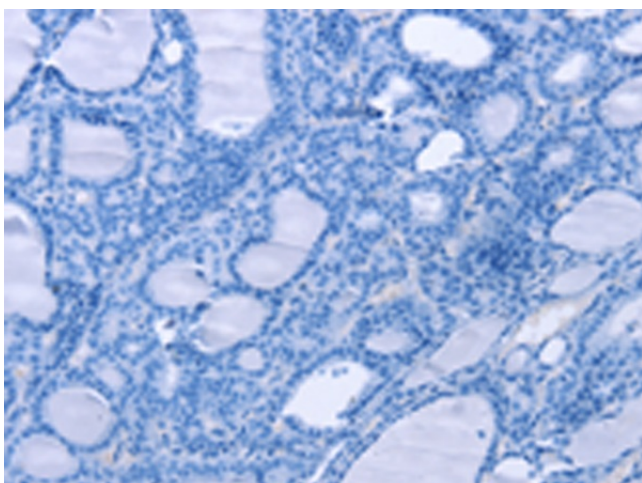
Product Type:	Primary Antibodies
Applications:	IHC
Recommended Dilution:	IHC: 50-200 Positive control: Human thyroid cancer Predicted cell location: Cytoplasm
Reactivity:	Human, Mouse, Rat
Host:	Rabbit
Isotype:	IgG
Clonality:	Polyclonal
Immunogen:	Fusion protein of human PPP2R3C
Formulation:	pH7.4 PBS, 0.05% NaN ₃ , 40% Glycerol
Concentration:	lot specific
Purification:	Antigen affinity purification
Conjugation:	Unconjugated
Storage:	Store at -20°C.
Stability:	1 year
Gene Name:	protein phosphatase 2 regulatory subunit B"gamma
Database Link:	Entrez Gene 55012 Human Q969Q6
Background:	Serine/threonine-protein phosphatase 2A regulatory subunit B" subunit gamma is an enzyme that in humans is encoded by the PPP2R3C gene. May regulate MCM3AP phosphorylation through phosphatase recruitment. May play a role in the activation-induced cell death of B-cells.
Synonyms:	C14orf10; FLJ20644; G4-1; G5pr



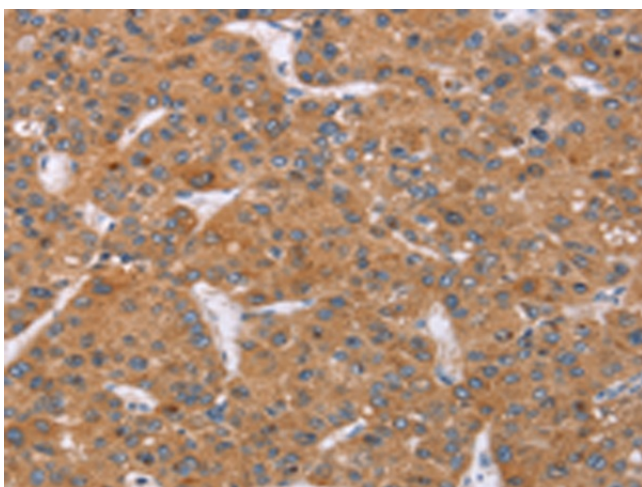
[View online »](#)

Product images:

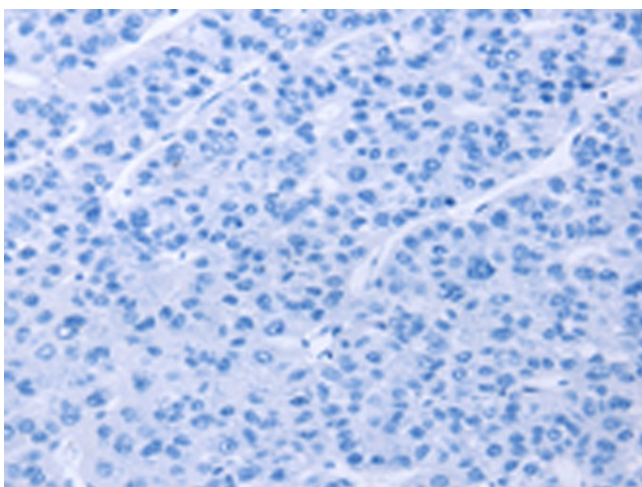
Immunohistochemistry of paraffin-embedded Human thyroid cancer tissue using TA364934 (PPP2R3C Antibody) at dilution 1/30 (Original magnification: $\times 200$)



Immunohistochemistry of paraffin-embedded Human thyroid cancer tissue using TA364934 (PPP2R3C Antibody) at dilution 1/30, treated with fusion protein. (Original magnification: $\times 200$)



Immunohistochemistry of paraffin-embedded Human liver cancer tissue using TA364934 (PPP2R3C Antibody) at dilution 1/30 (Original magnification: $\times 200$)



Immunohistochemistry of paraffin-embedded Human liver cancer tissue using TA364934 (PPP2R3C Antibody) at dilution 1/30, treated with fusion protein. (Original magnification: $\times 200$)