

## Product datasheet for **TA364922S**

### **PIN1 Rabbit Polyclonal Antibody**

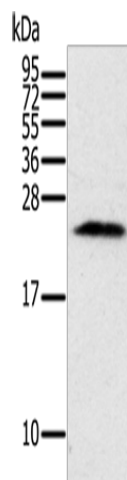
#### **Product data:**

Product Type:	Primary Antibodies
Applications:	WB
Recommended Dilution:	WB: 200-1000 WB positive control: Mouse brain tissue
Reactivity:	Human, Mouse
Host:	Rabbit
Isotype:	IgG
Clonality:	Polyclonal
Immunogen:	Fusion protein of human PIN1
Formulation:	pH7.4 PBS, 0.05% NaN <sub>3</sub> , 40% Glycerol
Purification:	Antigen affinity purification
Conjugation:	Unconjugated
Storage:	Store at -20°C.
Stability:	1 year
Predicted Protein Size:	18 kDa
Gene Name:	peptidylprolyl cis/trans isomerase, NIMA-interacting 1
Database Link:	<a href="#">Entrez Gene 5300 Human Q13526</a>
Background:	Peptidyl-prolyl cis/trans isomerases (PPlases) catalyze the cis/trans isomerization of peptidyl-prolyl peptide bonds. This gene encodes one of the PPlases, which specifically binds to phosphorylated ser/thr-pro motifs to catalytically regulate the post-phosphorylation conformation of its substrates. The conformational regulation catalyzed by this PPlase has a profound impact on key proteins involved in the regulation of cell growth, genotoxic and other stress responses, the immune response, induction and maintenance of pluripotency, germ cell development, neuronal differentiation, and survival.
Synonyms:	DOD; UBL5



[View online »](#)

## Product images:



Gel: 12%SDS-PAGE  
Lysate: 40  $\mu$ g  
Lane: Mouse brain tissue  
Primary antibody: [TA364922] (PIN1 Antibody) at dilution 1/250  
Secondary antibody: Goat anti rabbit IgG at 1/8000 dilution  
Exposure time: 20 seconds