

Product datasheet for **TA364918S**

PHAP1 (ANP32A) Rabbit Polyclonal Antibody

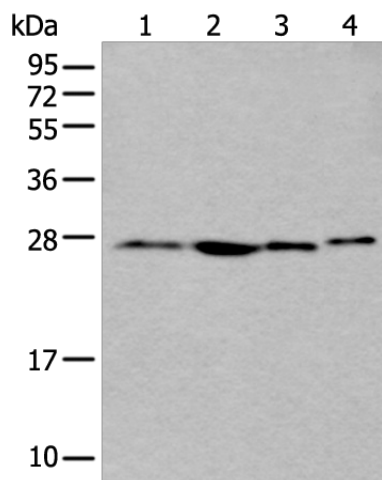
Product data:

Product Type:	Primary Antibodies
Applications:	IHC, WB
Recommended Dilution:	WB: 200-1000 WB positive control: Jurkat,Raji,Hela and HEPG2 cell lysates IHC: 25-100 Positive control: Human lung cancer Predicted cell location: Nucleus
Reactivity:	Human
Host:	Rabbit
Isotype:	IgG
Clonality:	Polyclonal
Immunogen:	Full length fusion protein
Formulation:	pH7.4 PBS, 0.05% NaN ₃ , 40% Glycerol
Purification:	Antigen affinity purification
Conjugation:	Unconjugated
Storage:	Store at -20°C.
Stability:	1 year
Predicted Protein Size:	29 kDa
Gene Name:	acidic nuclear phosphoprotein 32 family member A
Database Link:	Entrez Gene 8125 Human P39687
Background:	Implicated in a number of cellular processes, including proliferation, differentiation, caspase-dependent and caspase-independent apoptosis, suppression of transformation (tumor suppressor), inhibition of protein phosphatase 2A, regulation of mRNA trafficking and stability in association with ELAVL1, and inhibition of acetyltransferases as part of the INHAT (inhibitor of histone acetyltransferases) complex. Plays a role in E4F1-mediated transcriptional repression.
Synonyms:	C15orf1; I1PP2A; LANP; MAPM; mapmodulin; MGC119787; MGC150373; PHAP1; PHAPI; PP32

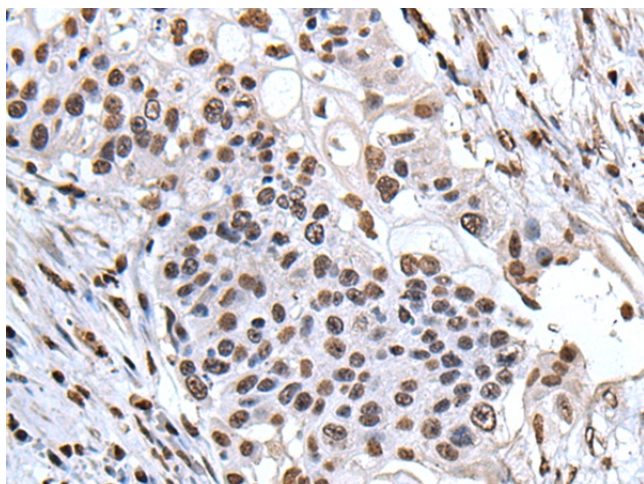


[View online »](#)

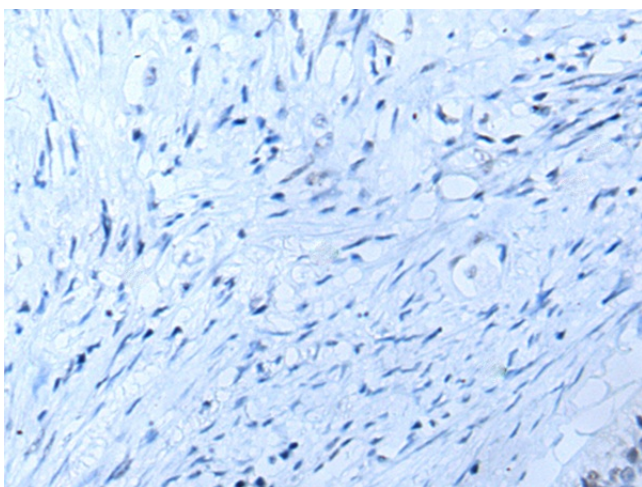
Product images:



Gel: 12%SDS-PAGE
Lysate: 40 μ g
Lane 1-4: Jurkat
Raji
Hela and HEPG2 cell lysates
Primary antibody: [TA364918] (ANP32A Antibody)
at dilution 1/300
Secondary antibody: Goat anti rabbit IgG at
1/8000 dilution
Exposure time: 5 seconds



Immunohistochemistry of paraffin-embedded
Human lung cancer tissue using [TA364918]
(ANP32A Antibody) at dilution 1/30 (Original
magnification: $\times 200$)



Immunohistochemistry of paraffin-embedded Human lung cancer tissue using [TA364918] (ANP32A Antibody) at dilution 1/30, treated with fusion protein. (Original magnification: ×200)