

## Product datasheet for **TA364914**

### SCDGFB (PDGFD) Rabbit Polyclonal Antibody

#### Product data:

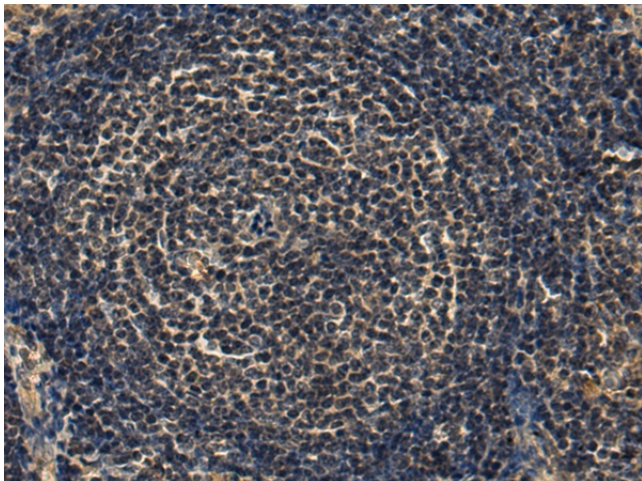
|                       |   |
|-----------------------|---|
| Product Type:         | Primary Antibodies  |
| Applications:         | IHC   |
| Recommended Dilution: | IHC: 100-300<br>Positive control: Human esophagus cancer<br>Predicted cell location: Secreted |
| Reactivity:           | Human, Mouse, Rat   |
| Host:                 | Rabbit  |
| Isotype:              | IgG   |
| Clonality:            | Polyclonal  |
| Immunogen:            | Fusion protein of human PDGFD   |
| Formulation:          | pH7.4 PBS, 0.05% NaN <sub>3</sub> , 40% Glycerol  |
| Concentration:        | lot specific  |
| Purification:         | Antigen affinity purification   |
| Conjugation:          | Unconjugated  |
| Storage:              | Store at -20°C.   |
| Stability:            | 1 year  |
| Gene Name:            | platelet derived growth factor D  |
| Database Link:        | <a href="#">Entrez Gene 80310 Human Q9GZP0</a>  |

**Background:** The protein encoded by this gene is a member of the platelet-derived growth factor family. The four members of this family are mitogenic factors for cells of mesenchymal origin and are characterized by a core motif of eight cysteines, seven of which are found in this factor. This gene product only forms homodimers and, therefore, does not dimerize with the other three family members. It differs from alpha and beta members of this family in having an unusual N-terminal domain, the CUB domain. Two splice variants have been identified for this gene. [provided by RefSeq, Jul 2008]

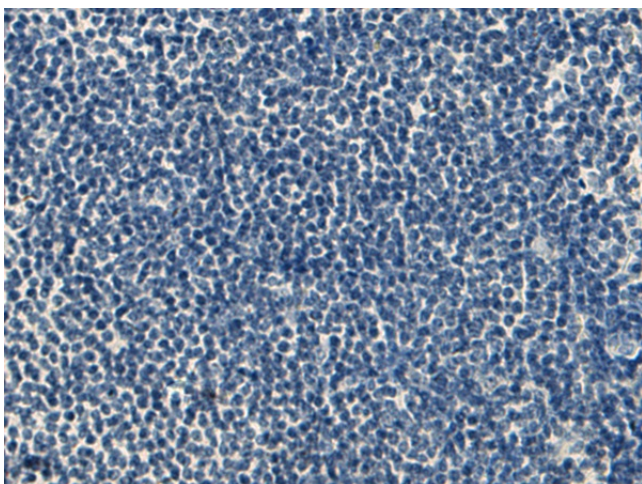
**Synonyms:** IEGF; MGC26867; MSTP036; PDGF-D; SCDGF-B; SCDGFB



[View online »](#)

**Product images:**

Immunohistochemistry of paraffin-embedded Human esophagus cancer tissue using TA364914 (PDGFD Antibody) at dilution 1/120 (Original magnification: x200)



Immunohistochemistry of paraffin-embedded Human esophagus cancer tissue using TA364914 (PDGFD Antibody) at dilution 1/120, treated with fusion protein. (Original magnification: x200)