

Product datasheet for TA364912S

Pancreatic Lipase (PNLIP) Rabbit Polyclonal Antibody

Product data:

| | |
|-------------------------|--|
| Product Type: | Primary Antibodies |
| Applications: | IHC, WB |
| Recommended Dilution: | WB: 500-2000 WB positive control: A549 cell lysate IHC: 25-100 Positive control: Human cervical cancer Predicted cell location: Secreted |
| Reactivity: | Human, Mouse |
| Host: | Rabbit |
| Isotype: | IgG |
| Clonality: | Polyclonal |
| Immunogen: | Fusion protein of human PNLIP |
| Formulation: | pH7.4 PBS, 0.05% NaN ₃ , 40% Glycerol |
| Purification: | Antigen affinity purification |
| Conjugation: | Unconjugated |
| Storage: | Store at -20°C. |
| Stability: | 1 year |
| Predicted Protein Size: | 51 kDa |
| Gene Name: | pancreatic lipase |
| Database Link: | Entrez Gene 5406 Human P16233 |

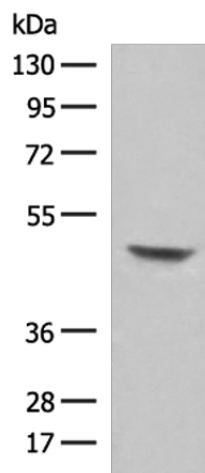
Background: This gene encodes a member of the lipase family of proteins. The encoded enzyme is secreted by the pancreas and hydrolyzes triglycerides in the small intestine, and is essential for the efficient digestion of dietary fats. Inhibition of the encoded enzyme may prevent high-fat diet-induced obesity in mice and result in weight loss in human patients with obesity. Mutations in this gene cause congenital pancreatic lipase deficiency, a rare disorder characterized by steatorrhea.

Synonyms: PL

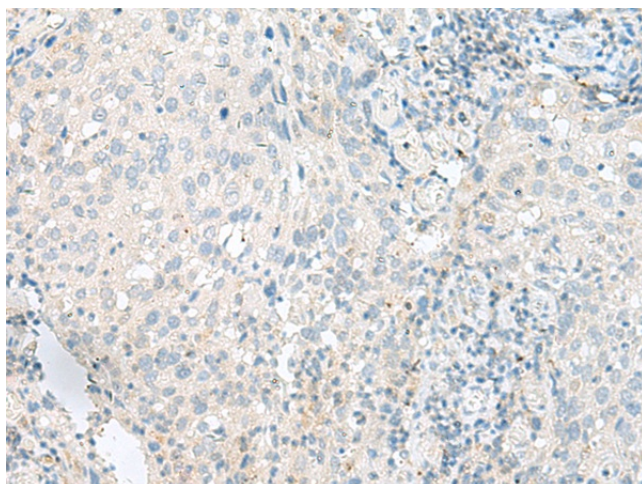


[View online »](#)

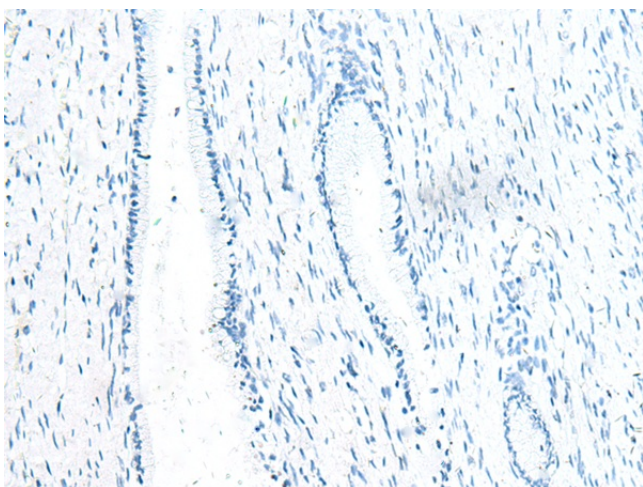
Product images:



Gel: 8%SDS-PAGE
Lysate: 40 μ g
Lane: A549 cell lysate
Primary antibody: [TA364912] (PNLIP Antibody) at dilution 1/250
Secondary antibody: Goat anti rabbit IgG at 1/8000 dilution
Exposure time: 15 seconds



Immunohistochemistry of paraffin-embedded Human cervical cancer tissue using [TA364912] (PNLIP Antibody) at dilution 1/35 (Original magnification: \times 200)



Immunohistochemistry of paraffin-embedded Human cervical cancer tissue using [TA364912] (PNLIP Antibody) at dilution 1/35, treated with fusion protein. (Original magnification: ×200)