

Product datasheet for **TA364912**

Pancreatic Lipase (PNLIP) Rabbit Polyclonal Antibody

Product data:

Product Type:	Primary Antibodies
Applications:	IHC, WB
Recommended Dilution:	WB: 500-2000 WB positive control: A549 cell lysate IHC: 25-100 Positive control: Human cervical cancer Predicted cell location: Secreted
Reactivity:	Human, Mouse
Host:	Rabbit
Isotype:	IgG
Clonality:	Polyclonal
Immunogen:	Fusion protein of human PNLIP
Formulation:	pH7.4 PBS, 0.05% NaN ₃ , 40% Glycerol
Concentration:	lot specific
Purification:	Antigen affinity purification
Conjugation:	Unconjugated
Storage:	Store at -20°C.
Stability:	1 year
Predicted Protein Size:	51 kDa
Gene Name:	pancreatic lipase
Database Link:	Entrez Gene 5406 Human P16233

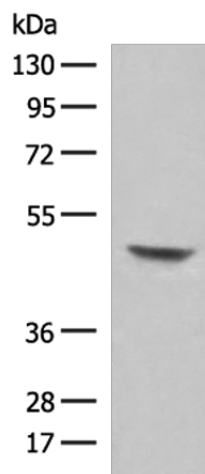
Background: This gene encodes a member of the lipase family of proteins. The encoded enzyme is secreted by the pancreas and hydrolyzes triglycerides in the small intestine, and is essential for the efficient digestion of dietary fats. Inhibition of the encoded enzyme may prevent high-fat diet-induced obesity in mice and result in weight loss in human patients with obesity. Mutations in this gene cause congenital pancreatic lipase deficiency, a rare disorder characterized by steatorrhea.



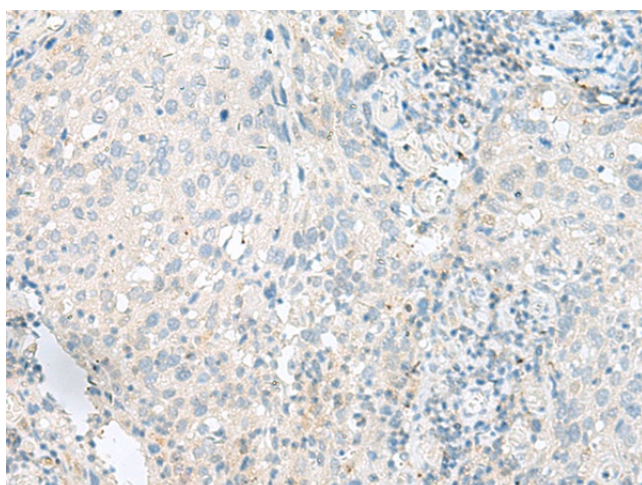
[View online »](#)

Synonyms: PL

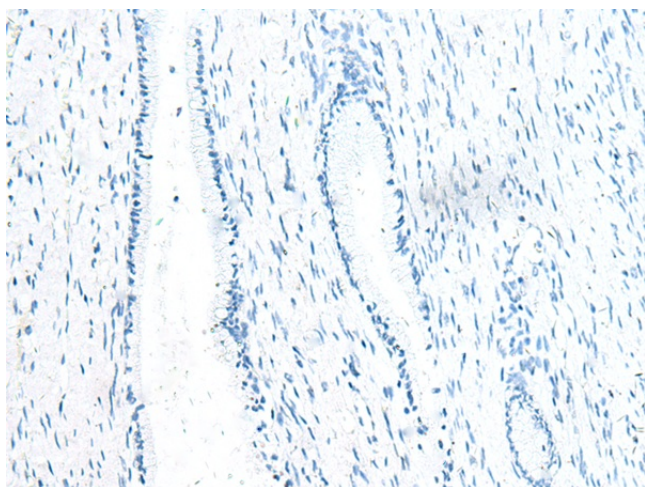
Product images:



Gel: 8%SDS-PAGE
 Lysate: 40 µg
 Lane: A549 cell lysate
 Primary antibody: TA364912 (PNLIP Antibody) at dilution 1/250
 Secondary antibody: Goat anti rabbit IgG at 1/8000 dilution
 Exposure time: 15 seconds



Immunohistochemistry of paraffin-embedded Human cervical cancer tissue using TA364912 (PNLIP Antibody) at dilution 1/35 (Original magnification: ×200)



Immunohistochemistry of paraffin-embedded Human cervical cancer tissue using TA364912 (PNLIP Antibody) at dilution 1/35, treated with fusion protein. (Original magnification: ×200)