

Product datasheet for **TA364911**

PAICS Rabbit Polyclonal Antibody

Product data:

Product Type:	Primary Antibodies
Applications:	IHC, WB
Recommended Dilution:	WB: 1000-5000 WB positive control: Jurkat, Raji, K562 and hela cells IHC: 50-200 Positive control: Human liver cancer Predicted cell location: Cytoplasm or Cell membrane
Reactivity:	Human, Mouse, Rat
Host:	Rabbit
Isotype:	IgG
Clonality:	Polyclonal
Immunogen:	Fusion protein of human PAICS
Formulation:	pH7.4 PBS, 0.05% NaN ₃ , 40% Glycerol
Concentration:	lot specific
Purification:	Antigen affinity purification
Conjugation:	Unconjugated
Storage:	Store at -20°C.
Stability:	1 year
Predicted Protein Size:	47 kDa
Gene Name:	phosphoribosylaminoimidazole carboxylase; phosphoribosylaminoimidazolesuccinocarboxamide synthase
Database Link:	Entrez Gene 10606 Human P22234



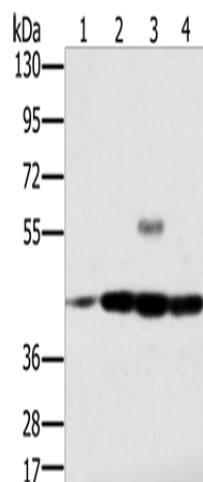
[View online »](#)

Background:

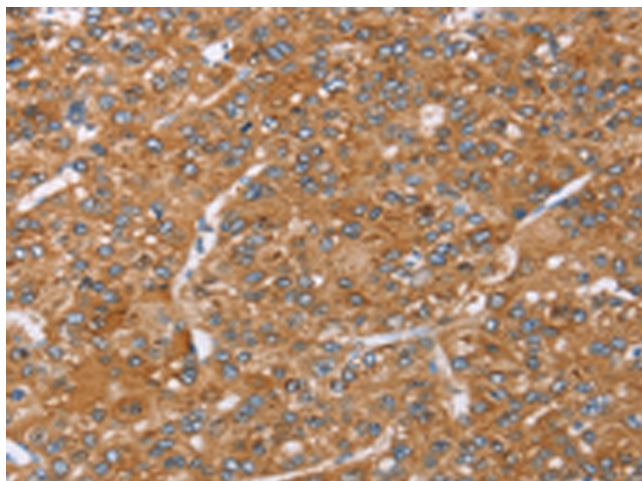
This gene encodes a bifunctional enzyme containing phosphoribosylaminoimidazole carboxylase activity in its N-terminal region and phosphoribosylaminoimidazole succinocarboxamide synthetase in its C-terminal region. It catalyzes steps 6 and 7 of purine biosynthesis. The gene is closely linked and divergently transcribed with a locus that encodes an enzyme in the same pathway, and transcription of the two genes is coordinately regulated. The human genome contains several pseudogenes of this gene. Multiple transcript variants encoding different isoforms have been found for this gene.

Synonyms:

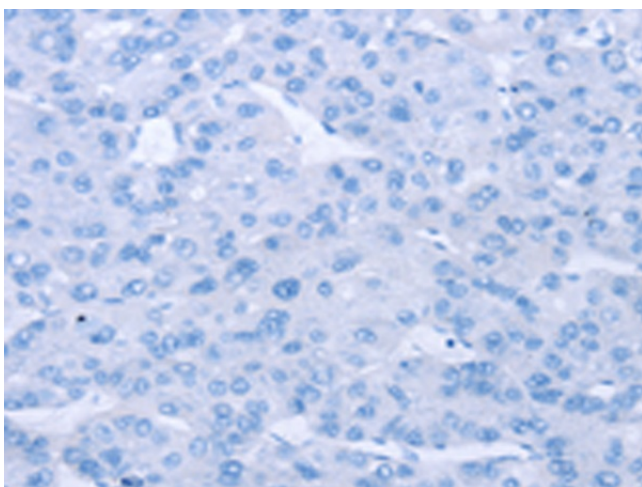
ADE2; ADE2H1; AIRC; DKFZp781N1372; MGC1343; MGC5024; PAIS

Product images:

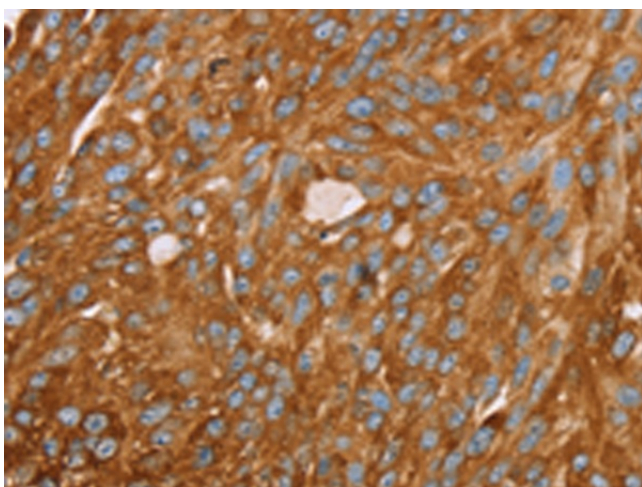
Gel: 8%SDS-PAGE
Lysate: 40 μ g
Lane 1-4: Jurkat cells
Raji cells
K562 cells
hela cells
Primary antibody: TA364911 (PAICS Antibody) at dilution 1/400
Secondary antibody: Goat anti rabbit IgG at 1/8000 dilution
Exposure time: 20 seconds



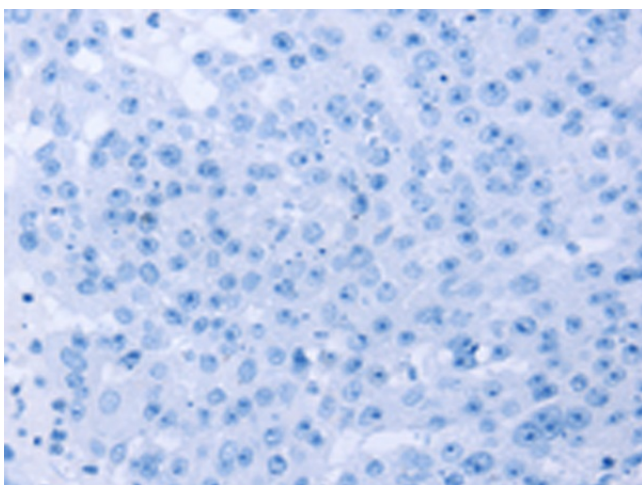
Immunohistochemistry of paraffin-embedded Human liver cancer tissue using TA364911 (PAICS Antibody) at dilution 1/35 (Original magnification: \times 200)



Immunohistochemistry of paraffin-embedded Human liver cancer tissue using TA364911 (PAICS Antibody) at dilution 1/35, treated with fusion protein. (Original magnification: x200)



Immunohistochemistry of paraffin-embedded Human breast cancer tissue using TA364911 (PAICS Antibody) at dilution 1/35 (Original magnification: x200)



Immunohistochemistry of paraffin-embedded Human breast cancer tissue using TA364911 (PAICS Antibody) at dilution 1/35, treated with fusion protein. (Original magnification: x200)