

## Product datasheet for **TA364908**

### **OXSRI Rabbit Polyclonal Antibody**

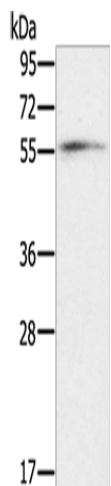
#### **Product data:**

|                         |   |
|-------------------------|---|
| Product Type:           | Primary Antibodies  |
| Applications:           | WB  |
| Recommended Dilution:   | WB: 200-1000<br>WB positive control: Human normal liver tissue  |
| Reactivity:             | Human, Mouse  |
| Host:                   | Rabbit  |
| Isotype:                | IgG   |
| Clonality:              | Polyclonal  |
| Immunogen:              | Fusion protein of human OXSRI   |
| Formulation:            | pH7.4 PBS, 0.05% NaN <sub>3</sub> , 40% Glycerol  |
| Concentration:          | lot specific  |
| Purification:           | Antigen affinity purification   |
| Conjugation:            | Unconjugated  |
| Storage:                | Store at -20°C.   |
| Stability:              | 1 year  |
| Predicted Protein Size: | 58 kDa  |
| Gene Name:              | oxidative stress responsive 1   |
| Database Link:          | <a href="#">Entrez Gene 9943 Human O95747</a>   |
| Background:             | The product of this gene belongs to the Ser/Thr protein kinase family of proteins. It regulates downstream kinases in response to environmental stress, and may play a role in regulating the actin cytoskeleton. |
| Synonyms:               | KIAA1101; OSR1  |



[View online »](#)

## Product images:



Gel: 8%SDS-PAGE

Lysate: 80  $\mu$ g

Lane: Human normal liver tissue

Primary antibody: TA364908 (OXSR1 Antibody) at dilution 1/200

Secondary antibody: Goat anti rabbit IgG at 1/8000 dilution

Exposure time: 2 minutes