

Product datasheet for **TA364904**

NUP50 Rabbit Polyclonal Antibody

Product data:

Product Type:	Primary Antibodies
Applications:	IHC, WB
Recommended Dilution:	WB: 200-1000 WB positive control: Hela, 293T, A549 and HT-29 cells IHC: 25-100 Positive control: Human brain Predicted cell location: Nucleus
Reactivity:	Human
Host:	Rabbit
Isotype:	IgG
Clonality:	Polyclonal
Immunogen:	Fusion protein of human NUP50
Formulation:	pH7.4 PBS, 0.05% NaN ₃ , 40% Glycerol
Concentration:	lot specific
Purification:	Antigen affinity purification
Conjugation:	Unconjugated
Storage:	Store at -20°C.
Stability:	1 year
Predicted Protein Size:	50 kDa
Gene Name:	nucleoporin 50kDa
Database Link:	Entrez Gene 10762 Human Q9UKX7



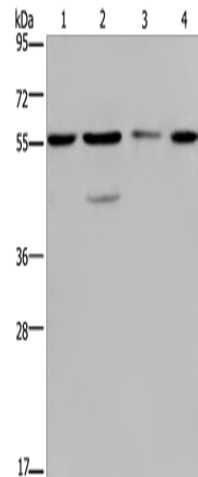
[View online »](#)

Background:

The nuclear pore complex is a massive structure that extends across the nuclear envelope, forming a gateway that regulates the flow of macromolecules between the nucleus and the Cytoplasm. Nucleoporins are the main components of the nuclear pore complex in eukaryotic cells. The protein encoded by this gene is a member of the FG-repeat containing nucleoporins that functions as a soluble cofactor in importin- α : β -mediated nuclear protein import. Pseudogenes of this gene are found on chromosomes 5, 6, and 14. Two transcript variants encoding different isoforms have been found for this gene.

Synonyms:

MGC39961; NPAP60; NPAP60L; OTTHUMP00000199530

Product images:

Gel: 8%SDS-PAGE

Lysate: 40 μ g

Lane 1-4: HeLa cells

293T cells

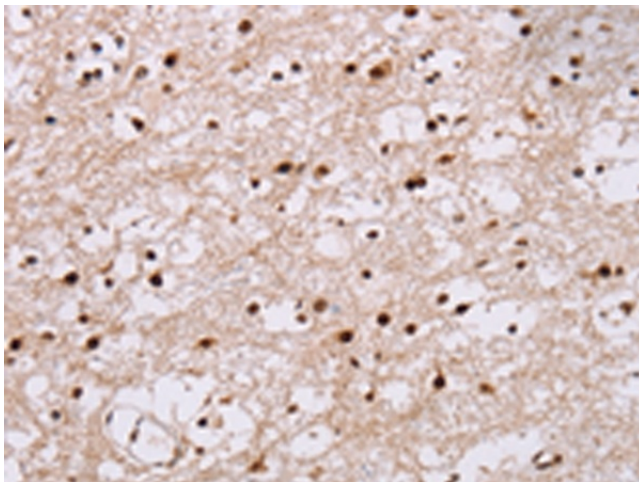
A549 cells

HT29 cells

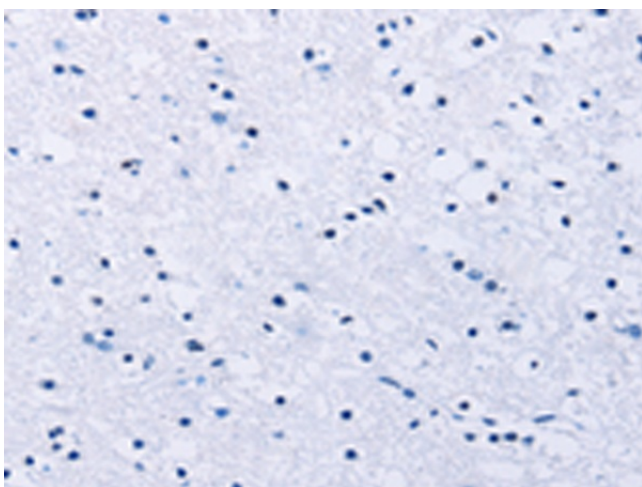
Primary antibody: TA364904 (NUP50 Antibody) at dilution 1/200

Secondary antibody: Goat anti rabbit IgG at 1/8000 dilution

Exposure time: 20 seconds



Immunohistochemistry of paraffin-embedded Human brain tissue using TA364904 (NUP50 Antibody) at dilution 1/30 (Original magnification: \times 200)



Immunohistochemistry of paraffin-embedded Human brain tissue using TA364904 (NUP50 Antibody) at dilution 1/30, treated with fusion protein. (Original magnification: $\times 200$)