

## Product datasheet for **TA364900S**

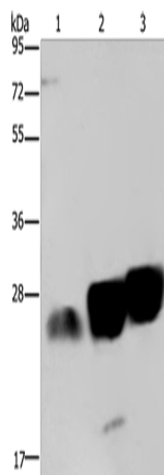
### NDUFS8 Rabbit Polyclonal Antibody

#### Product data:

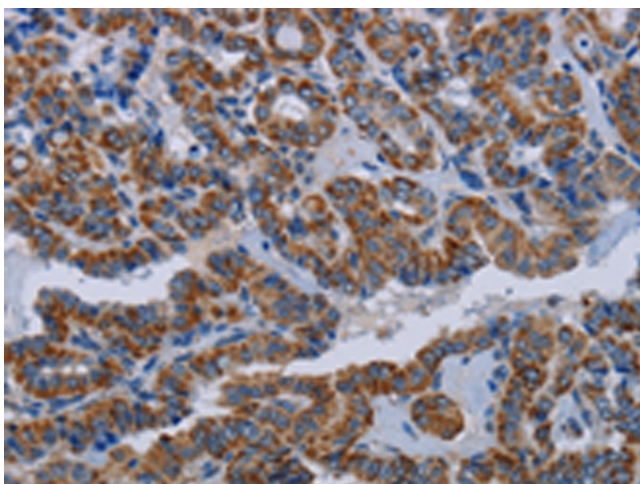
Product Type:	Primary Antibodies
Applications:	IHC, WB
Recommended Dilution:	WB: 500-2000 WB positive control: Jurkat cells, mouse heart and brain tissue IHC: 25-100 Positive control: Human thyroid cancer Predicted cell location: Cytoplasm
Reactivity:	Human, Mouse
Host:	Rabbit
Isotype:	IgG
Clonality:	Polyclonal
Immunogen:	Fusion protein of human NDUFS8
Formulation:	pH7.4 PBS, 0.05% NaN <sub>3</sub> , 40% Glycerol
Purification:	Antigen affinity purification
Conjugation:	Unconjugated
Storage:	Store at -20°C.
Stability:	1 year
Predicted Protein Size:	24 kDa
Gene Name:	NADH:ubiquinone oxidoreductase core subunit S8
Database Link:	<a href="#">Entrez Gene 4728 Human O00217</a>
Background:	This gene encodes a subunit of mitochondrial NADH:ubiquinone oxidoreductase, or Complex I, a multimeric enzyme of the respiratory chain responsible for NADH oxidation, ubiquinone reduction, and the ejection of protons from mitochondria. The encoded protein is involved in the binding of two of the six to eight iron-sulfur clusters of Complex I and, as such, is required in the electron transfer process. Mutations in this gene have been associated with Leigh syndrome.
Synonyms:	CI-23kD; CI23KD; TYKY



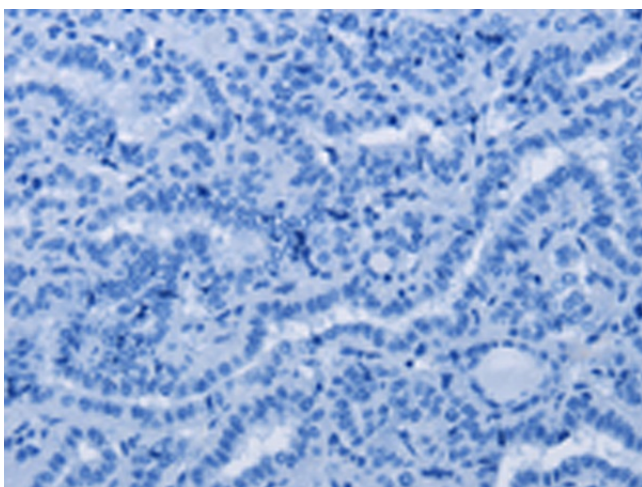
[View online »](#)

**Product images:**

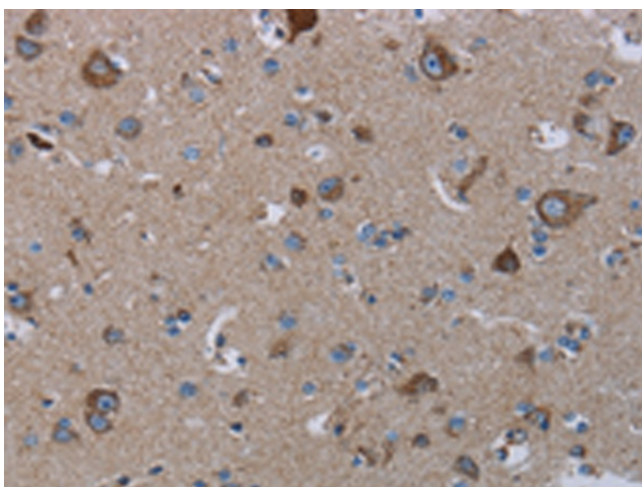
Gel: 10%SDS-PAGE  
Lysate: 40  $\mu$ g  
Lane 1-3: Jurkat cells  
mouse heart tissue  
Mouse brain tissue  
Primary antibody: [TA364900] (NDUFS8 Antibody)  
at dilution 1/250  
Secondary antibody: Goat anti rabbit IgG at  
1/8000 dilution  
Exposure time: 20 seconds



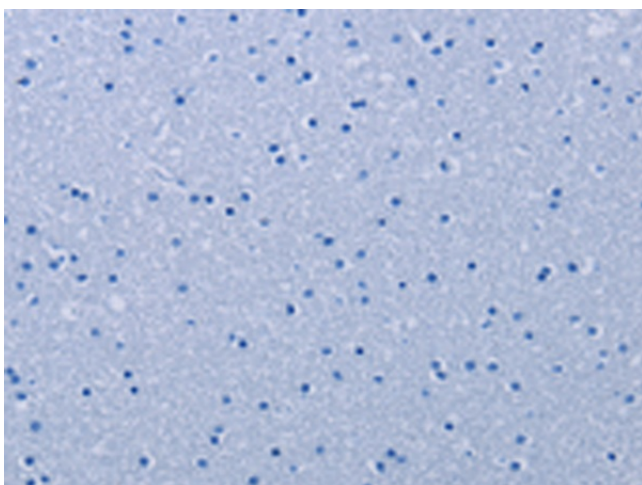
Immunohistochemistry of paraffin-embedded  
Human thyroid cancer tissue using [TA364900]  
(NDUFS8 Antibody) at dilution 1/20 (Original  
magnification:  $\times$ 200)



Immunohistochemistry of paraffin-embedded Human thyroid cancer tissue using [TA364900] (NDUFS8 Antibody) at dilution 1/20, treated with fusion protein. (Original magnification:  $\times 200$ )



Immunohistochemistry of paraffin-embedded Human brain tissue using [TA364900] (NDUFS8 Antibody) at dilution 1/20 (Original magnification:  $\times 200$ )



Immunohistochemistry of paraffin-embedded Human brain tissue using [TA364900] (NDUFS8 Antibody) at dilution 1/20, treated with fusion protein. (Original magnification:  $\times 200$ )