

## Product datasheet for **TA364889**

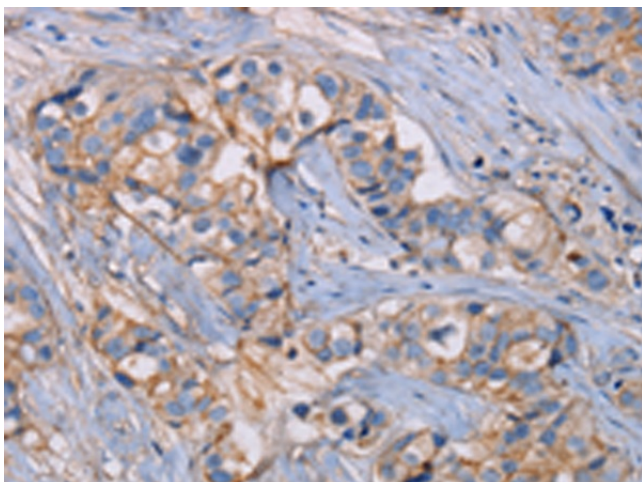
### **MICS1 (GHITM) Rabbit Polyclonal Antibody**

#### **Product data:**

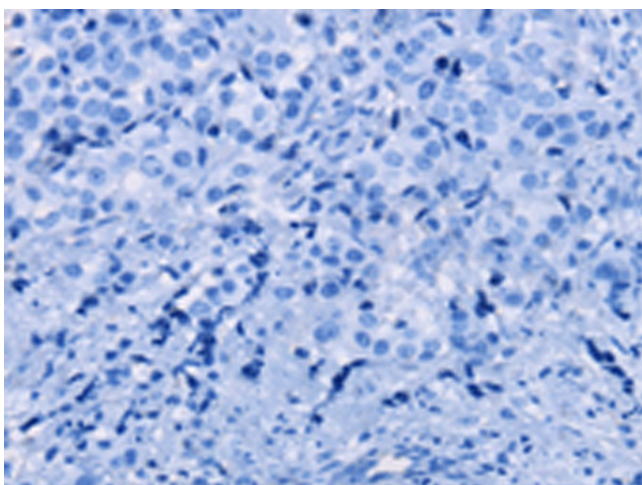
Product Type:	Primary Antibodies
Applications:	IHC
Recommended Dilution:	IHC: 25-100 Positive control: Human breast cancer Predicted cell location: Cytoplasm
Reactivity:	Human, Mouse, Rat
Host:	Rabbit
Isotype:	IgG
Clonality:	Polyclonal
Immunogen:	Fusion protein of human GHITM
Formulation:	pH7.4 PBS, 0.05% NaN <sub>3</sub> , 40% Glycerol
Concentration:	lot specific
Purification:	Antigen affinity purification
Conjugation:	Unconjugated
Storage:	Store at -20°C.
Stability:	1 year
Gene Name:	growth hormone inducible transmembrane protein
Database Link:	<a href="#">Entrez Gene 27069 Human Q9H3K2</a>
Background:	Growth hormone-inducible transmembrane protein is a protein that in humans is encoded by the GHITM gene. Required for the mitochondrial tubular network and cristae organization. Involved in apoptotic release of cytochrome c.
Synonyms:	DERP2; DKFZp566C0746; FLJ26584; HSPC282; MICS1; My021; PTD010; TMBIM5



[View online »](#)

**Product images:**

Immunohistochemistry of paraffin-embedded Human breast cancer tissue using TA364889 (GHITM Antibody) at dilution 1/30 (Original magnification:  $\times 200$ )



Immunohistochemistry of paraffin-embedded Human breast cancer tissue using TA364889 (GHITM Antibody) at dilution 1/30, treated with fusion protein. (Original magnification:  $\times 200$ )