

Product datasheet for **TA364887**

REG3G Rabbit Polyclonal Antibody

Product data:

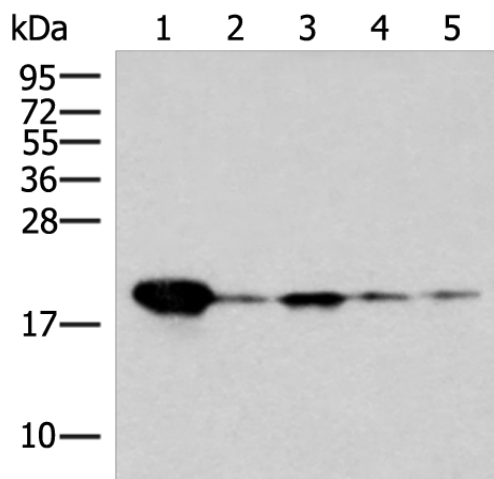
Product Type:	Primary Antibodies
Applications:	IHC, WB
Recommended Dilution:	WB: 500-2000 WB positive control: Mouse kidney tissue, A172 cell, Human left kidney paracancerous tissue, 293T and TM4 cell lysates IHC: 50-300 Positive control: Human thyroid cancer Predicted cell location: Cytoplasm
Reactivity:	Human, Mouse
Host:	Rabbit
Isotype:	IgG
Clonality:	Polyclonal
Immunogen:	Fusion protein of human REG3G
Formulation:	pH7.4 PBS, 0.05% NaN ₃ , 40% Glycerol
Concentration:	lot specific
Purification:	Antigen affinity purification
Conjugation:	Unconjugated
Storage:	Store at -20°C.
Stability:	1 year
Predicted Protein Size:	19 kDa
Gene Name:	regenerating family member 3 gamma
Database Link:	Entrez Gene 130120 Human Q6UW15
Background:	This gene encodes a member of the regenerating islet-derived genes (REG)3 protein family. These proteins are secreted, C-type lectins with a carbohydrate recognition domain and N-terminal signal peptide. The protein encoded by this gene is an antimicrobial lectin with activity against Gram-positive bacteria. Alternative splicing results in multiple transcript variants encoding multiple isoforms.



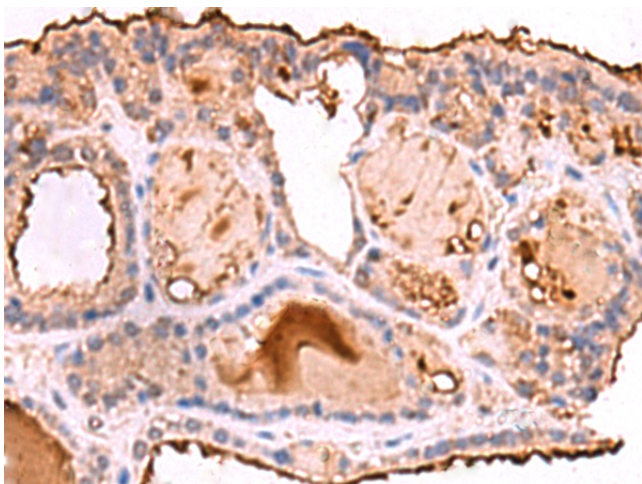
[View online »](#)

Synonyms: LPPM429; MGC118998; MGC118999; MGC119001; PAP1B; PAPIB; REG-III; UNQ429

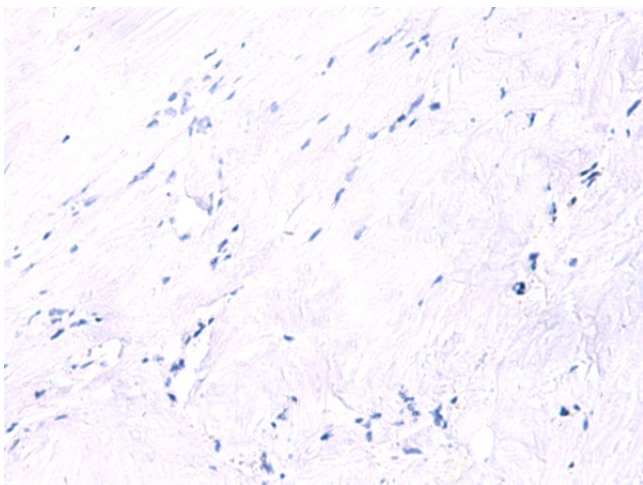
Product images:



Gel: 12%SDS-PAGE
 Lysate: 40 µg
 Lane 1-5: Mouse kidney tissue
 A172 cell
 Human left kidney paracancerous tissue
 293T and TM4 cell lysates
 Primary antibody: TA364887 (REG3G Antibody) at dilution 1/400
 Secondary antibody: Goat anti rabbit IgG at 1/8000 dilution
 Exposure time: 90 seconds



Immunohistochemistry of paraffin-embedded Human thyroid cancer tissue using TA364887 (REG3G Antibody) at dilution 1/75 (Original magnification: ×200)



Immunohistochemistry of paraffin-embedded Human thyroid cancer tissue using TA364887 (REG3G Antibody) at dilution 1/75, treated with fusion protein. (Original magnification: ×200)