

## Product datasheet for **TA364886**

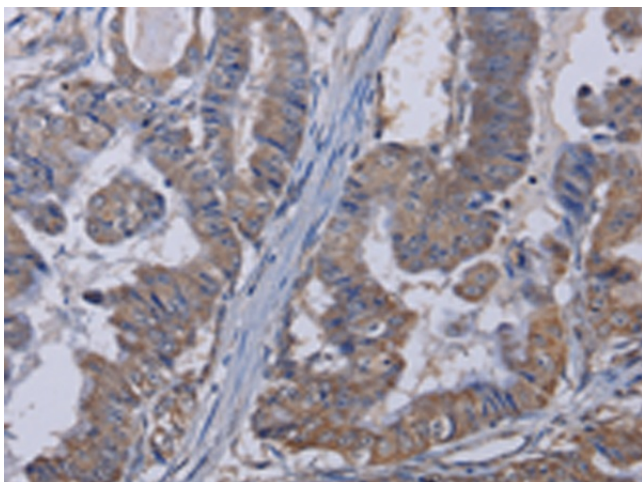
### TRPM8 Rabbit Polyclonal Antibody

#### Product data:

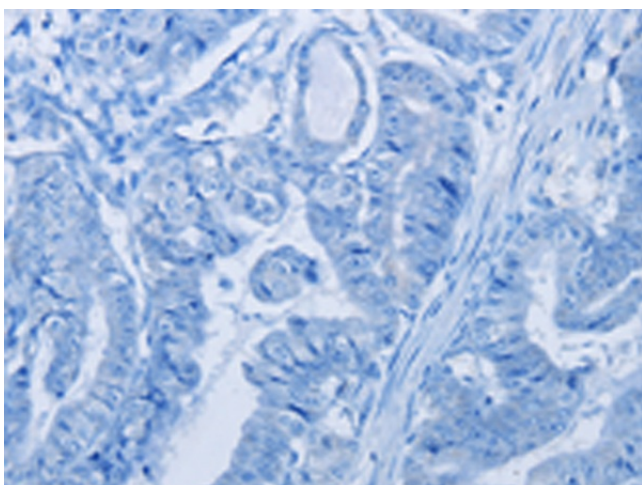
Product Type:	Primary Antibodies
Applications:	IHC
Recommended Dilution:	IHC: 25-100 Positive control: Human esophagus cancer Predicted cell location: Cytoplasm
Reactivity:	Human, Mouse, Rat
Host:	Rabbit
Isotype:	IgG
Clonality:	Polyclonal
Immunogen:	Fusion protein of human TRPM8
Formulation:	pH7.4 PBS, 0.05% NaN <sub>3</sub> , 40% Glycerol
Concentration:	lot specific
Purification:	Antigen affinity purification
Conjugation:	Unconjugated
Storage:	Store at -20°C.
Stability:	1 year
Gene Name:	transient receptor potential cation channel subfamily M member 8
Database Link:	<a href="#">Entrez Gene 79054 Human Q7Z2W7</a>
Background:	Transient receptor potential ion channels (TRPC) are a superfamily of six transmembrane segment-spanning gated cation channels. TRP subtypes mediate store-operated Ca <sup>2+</sup> entry, a process involving Ca <sup>2+</sup> influx and replenishment of Ca <sup>2+</sup> stores formerly emptied through the action of inositol 1,4,5-trisphosphate production and other Ca <sup>2+</sup> mobilizing agents.
Synonyms:	LTRPC6; MGC2849; Trp-p8; TRPP8



[View online »](#)

**Product images:**

Immunohistochemistry of paraffin-embedded Human esophagus cancer tissue using TA364886 (TRPM8 Antibody) at dilution 1/30 (Original magnification:  $\times 200$ )



Immunohistochemistry of paraffin-embedded Human esophagus cancer tissue using TA364886 (TRPM8 Antibody) at dilution 1/30, treated with fusion protein. (Original magnification:  $\times 200$ )