

Product datasheet for **TA364880S**

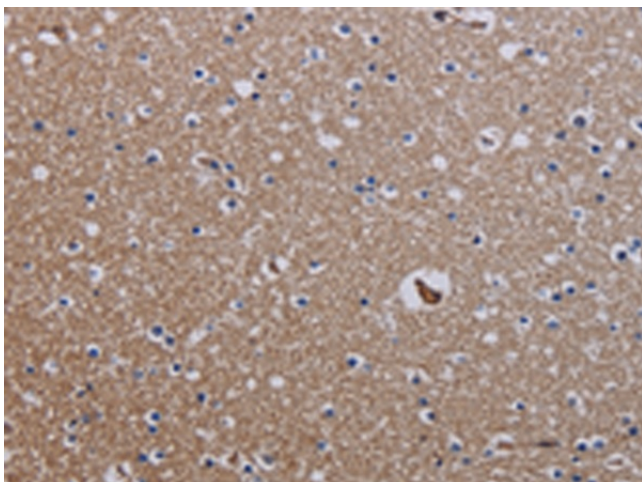
MCPIP1 (ZC3H12A) Rabbit Polyclonal Antibody

Product data:

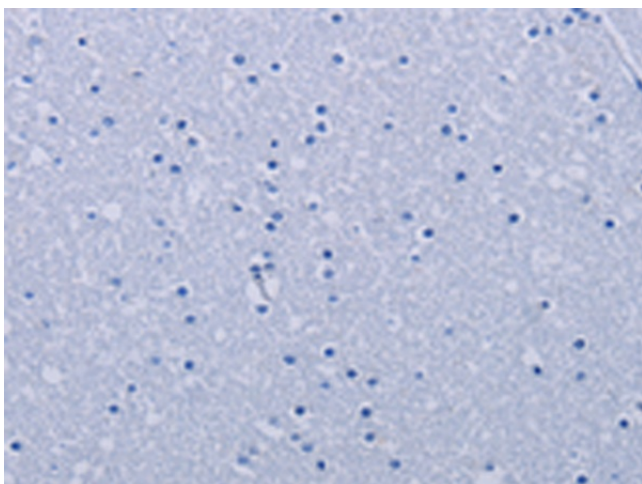
Product Type:	Primary Antibodies
Applications:	IHC
Recommended Dilution:	IHC: 25-100 Positive control: Human brain Predicted cell location: Cytoplasm
Reactivity:	Human
Host:	Rabbit
Isotype:	IgG
Clonality:	Polyclonal
Immunogen:	Fusion protein of human ZC3H12A
Formulation:	pH7.4 PBS, 0.05% NaN ₃ , 40% Glycerol
Purification:	Antigen affinity purification
Conjugation:	Unconjugated
Storage:	Store at -20°C.
Stability:	1 year
Gene Name:	zinc finger CCCH-type containing 12A
Database Link:	Entrez Gene 80149 Human Q5D1E8
Background:	ZC3H12A is an MCP1 (CCL2; MIM 158105)-induced protein that acts as a transcriptional activator and causes cell death of cardiomyocytes, possibly via induction of genes associated with apoptosis.
Synonyms:	dj423B22.1; FLJ23231; MCPIP; MCPIP1; OTTHUMP00000004399; RP3-423B22.1



[View online »](#)

Product images:

Immunohistochemistry of paraffin-embedded Human brain tissue using [TA364880] (ZC3H12A Antibody) at dilution 1/25 (Original magnification: ×200)



Immunohistochemistry of paraffin-embedded Human brain tissue using [TA364880] (ZC3H12A Antibody) at dilution 1/25, treated with fusion protein. (Original magnification: ×200)