

## Product datasheet for **TA364880**

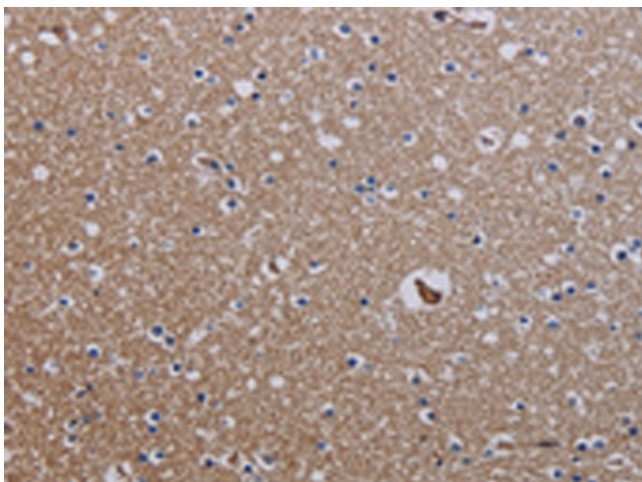
### **MCPIP1 (ZC3H12A) Rabbit Polyclonal Antibody**

#### **Product data:**

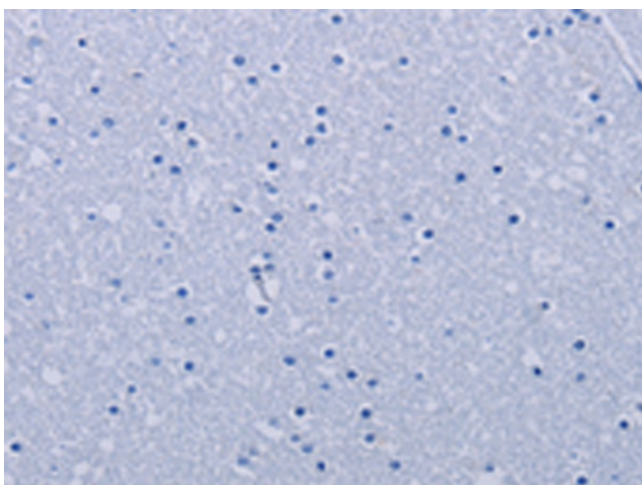
<b>Product Type:</b>	Primary Antibodies
<b>Applications:</b>	IHC
<b>Recommended Dilution:</b>	IHC: 25-100 Positive control: Human brain Predicted cell location: Cytoplasm
<b>Reactivity:</b>	Human
<b>Host:</b>	Rabbit
<b>Isotype:</b>	IgG
<b>Clonality:</b>	Polyclonal
<b>Immunogen:</b>	Fusion protein of human ZC3H12A
<b>Formulation:</b>	pH7.4 PBS, 0.05% NaN <sub>3</sub> , 40% Glycerol
<b>Concentration:</b>	lot specific
<b>Purification:</b>	Antigen affinity purification
<b>Conjugation:</b>	Unconjugated
<b>Storage:</b>	Store at -20°C.
<b>Stability:</b>	1 year
<b>Gene Name:</b>	zinc finger CCCH-type containing 12A
<b>Database Link:</b>	<a href="#">Entrez Gene 80149 Human Q5D1E8</a>
<b>Background:</b>	ZC3H12A is an MCP1 (CCL2; MIM 158105)-induced protein that acts as a transcriptional activator and causes cell death of cardiomyocytes, possibly via induction of genes associated with apoptosis.
<b>Synonyms:</b>	dj423B22.1; FLJ23231; MCPIP; MCPIP1; OTTHUMP00000004399; RP3-423B22.1



[View online »](#)

**Product images:**

Immunohistochemistry of paraffin-embedded Human brain tissue using TA364880 (ZC3H12A Antibody) at dilution 1/25 (Original magnification: ×200)



Immunohistochemistry of paraffin-embedded Human brain tissue using TA364880 (ZC3H12A Antibody) at dilution 1/25, treated with fusion protein. (Original magnification: ×200)