

Product datasheet for **TA364878**

LYK5 (STRADA) Rabbit Polyclonal Antibody

Product data:

Product Type:	Primary Antibodies
Applications:	IHC
Recommended Dilution:	IHC: 45-300 Positive control: Human colorectal cancer Predicted cell location: Nucleus or Cytoplasm
Reactivity:	Human, Mouse, Rat
Host:	Rabbit
Isotype:	IgG
Clonality:	Polyclonal
Immunogen:	Full length fusion protein
Formulation:	pH7.4 PBS, 0.05% NaN ₃ , 40% Glycerol
Concentration:	lot specific
Purification:	Antigen affinity purification
Conjugation:	Unconjugated
Storage:	Store at -20°C.
Stability:	1 year
Gene Name:	STE20-related kinase adaptor alpha
Database Link:	Entrez Gene 92335 Human Q7RTN6



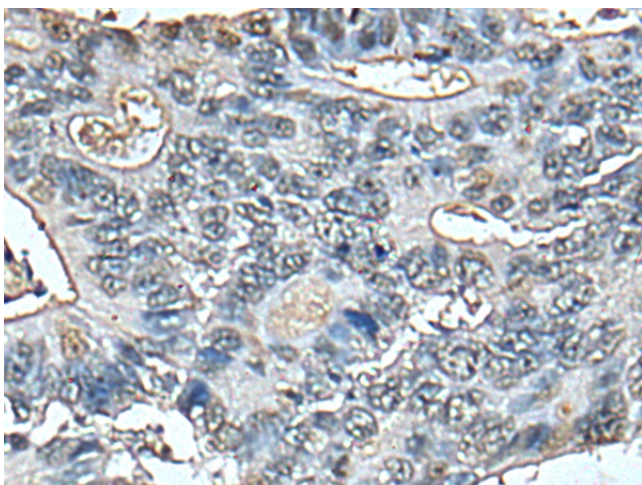
[View online »](#)

Background:

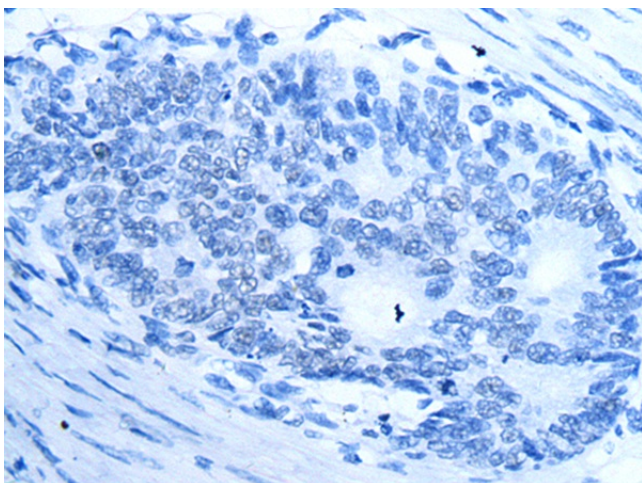
The protein encoded by this gene contains a STE20-like kinase domain, but lacks several residues that are critical for catalytic activity, so it is termed a 'pseudokinase'. The protein forms a heterotrimeric complex with serine/threonine kinase 11 (STK11, also known as LKB1) and the scaffolding protein calcium binding protein 39 (CAB39, also known as MO25). The protein activates STK11 leading to the phosphorylation of both proteins and excluding STK11 from the nucleus. The protein is necessary for STK11-induced G1 cell cycle arrest. A mutation in this gene has been shown to result in polyhydramnios, megalencephaly, and symptomatic epilepsy (PMSE) syndrome. Multiple transcript variants encoding different isoforms have been found for this gene. Additional transcript variants have been described but their full-length nature is not known.

Synonyms:

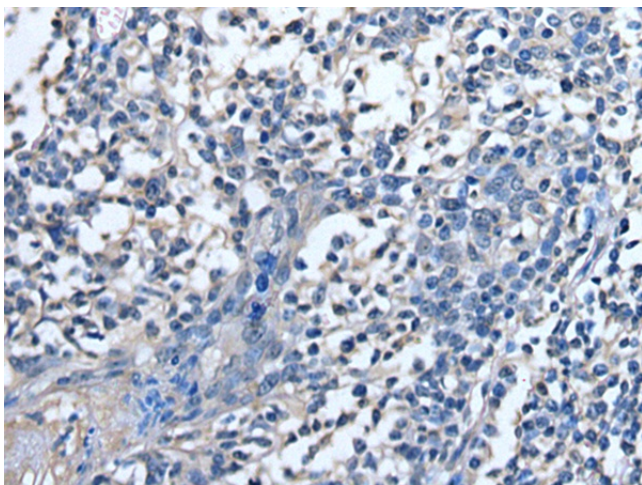
FLJ90524; LYK5; NY-BR-96; PMSE; Stlk; STRAD

Product images:

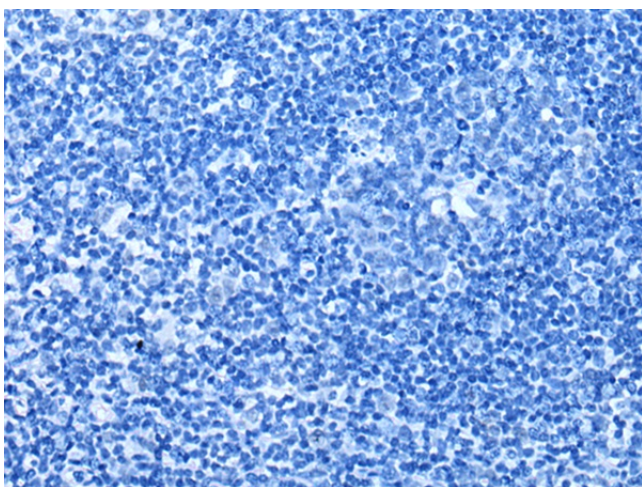
Immunohistochemistry of paraffin-embedded Human colorectal cancer tissue using TA364878 (STRADA Antibody) at dilution 1/85 (Original magnification: $\times 200$)



Immunohistochemistry of paraffin-embedded Human colorectal cancer tissue using TA364878 (STRADA Antibody) at dilution 1/85, treated with fusion protein. (Original magnification: $\times 200$)



Immunohistochemistry of paraffin-embedded Human tonsil tissue using TA364878 (STRADA Antibody) at dilution 1/85 (Original magnification: $\times 200$)



Immunohistochemistry of paraffin-embedded Human tonsil tissue using TA364878 (STRADA Antibody) at dilution 1/85, treated with fusion protein. (Original magnification: $\times 200$)