

## Product datasheet for **TA364872S**

### Lactate Dehydrogenase C (LDHC) Rabbit Polyclonal Antibody

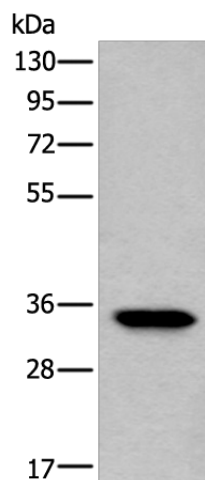
#### Product data:

Product Type:	Primary Antibodies
Applications:	IHC, WB
Recommended Dilution:	WB: 500-2000 WB positive control: Human testis tissue lysate IHC: 25-100 Positive control: Human lung cancer Predicted cell location: Cytoplasm
Reactivity:	Human
Host:	Rabbit
Isotype:	IgG
Clonality:	Polyclonal
Immunogen:	Fusion protein of human LDHC
Formulation:	pH7.4 PBS, 0.05% NaN <sub>3</sub> , 40% Glycerol
Purification:	Antigen affinity purification
Conjugation:	Unconjugated
Storage:	Store at -20°C.
Stability:	1 year
Predicted Protein Size:	36 kDa
Gene Name:	lactate dehydrogenase C
Database Link:	<a href="#">Entrez Gene 3948 Human P07864</a>
Background:	Lactate dehydrogenase C catalyzes the conversion of L-lactate and NAD to pyruvate and NADH in the final step of anaerobic glycolysis. LDHC is testis-specific and belongs to the lactate dehydrogenase family. Two transcript variants have been detected which differ in the 5' untranslated region.
Synonyms:	CT32; LDH-C; LDH-X; LDH3; LDHX; MGC111073

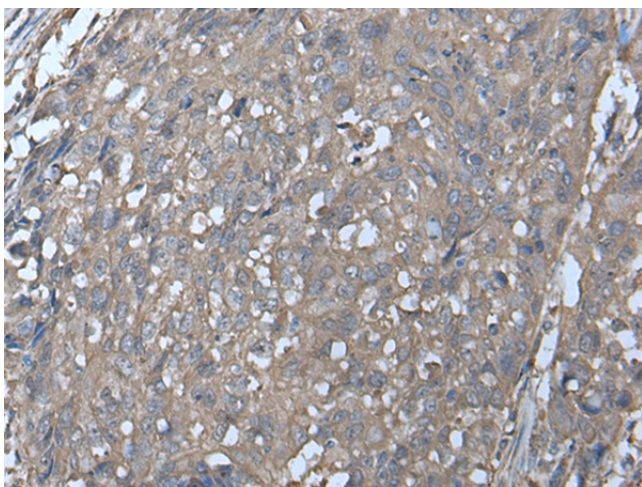


[View online »](#)

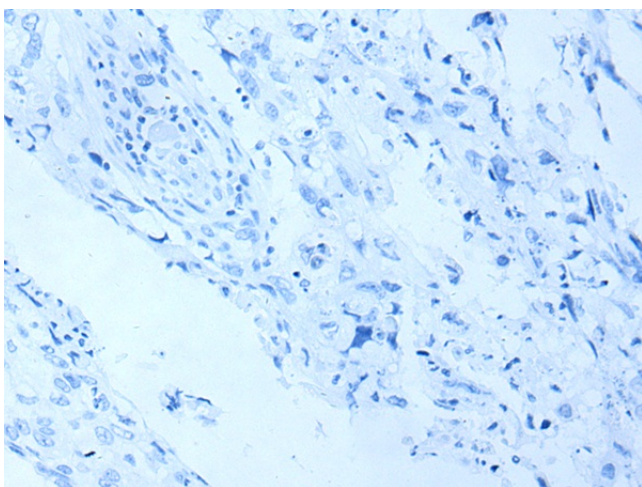
## Product images:



Gel: 8%SDS-PAGE  
Lysate: 40  $\mu$ g  
Lane: Human testis tissue lysate  
Primary antibody: [TA364872] (LDHC Antibody) at dilution 1/300  
Secondary antibody: Goat anti rabbit IgG at 1/8000 dilution  
Exposure time: 3 seconds



Immunohistochemistry of paraffin-embedded Human lung cancer tissue using [TA364872] (LDHC Antibody) at dilution 1/30 (Original magnification:  $\times$ 200)



Immunohistochemistry of paraffin-embedded Human lung cancer tissue using [TA364872] (LDHC Antibody) at dilution 1/30, treated with fusion protein. (Original magnification: ×200)