

Product datasheet for **TA364863**

KCNQ1 Rabbit Polyclonal Antibody

Product data:

| | |
|-------------------------|---|
| Product Type: | Primary Antibodies |
| Applications: | WB |
| Recommended Dilution: | WB: 200-1000 WB positive control: HT-29 cells, mouse kidney and heart tissue |
| Reactivity: | Human, Mouse, Rat |
| Host: | Rabbit |
| Isotype: | IgG |
| Clonality: | Polyclonal |
| Immunogen: | Fusion protein of human KCNQ1 |
| Formulation: | pH7.4 PBS, 0.05% NaN ₃ , 40% Glycerol |
| Concentration: | lot specific |
| Purification: | Antigen affinity purification |
| Conjugation: | Unconjugated |
| Storage: | Store at -20°C. |
| Stability: | 1 year |
| Predicted Protein Size: | 75 kDa |
| Gene Name: | potassium voltage-gated channel subfamily Q member 1 |
| Database Link: | Entrez Gene 3784 Human P51787 |



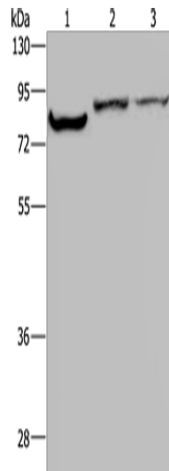
[View online »](#)

Background:

This gene encodes a voltage-gated potassium channel required for repolarization phase of the cardiac action potential. This protein can form heteromultimers with two other potassium channel proteins, KCNE1 and KCNE3. Mutations in this gene are associated with hereditary long QT syndrome 1 (also known as Romano-Ward syndrome), Jervell and Lange-Nielsen syndrome, and familial atrial fibrillation. This gene exhibits tissue-specific imprinting, with preferential expression from the maternal allele in some tissues, and biallelic expression in others. This gene is located in a region of chromosome 11 amongst other imprinted genes that are associated with Beckwith-Wiedemann syndrome (BWS), and itself has been shown to be disrupted by chromosomal rearrangements in patients with BWS. Alternatively spliced transcript variants have been found for this gene.

Synonyms:

ATFB1; ATFB3; FLJ26167; JLNS1; KCNA8; KCNA9; Kv1.9; Kv7.1; KVLQT1; LQT; LQT1; RWS; SQT2; WRS

Product images:

Gel: 8%SDS-PAGE

Lysate: 40 µg

Lane 1-3: HT29 cells

mouse kidney tissue

Mouse heart tissue

Primary antibody: TA364863 (KCNQ1 Antibody) at dilution 1/200

Secondary antibody: Goat anti rabbit IgG at 1/8000 dilution

Exposure time: 40 seconds