

Product datasheet for **TA364862**

gamma Catenin (JUP) Rabbit Polyclonal Antibody

Product data:

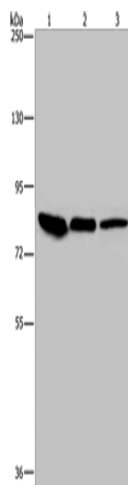
Product Type:	Primary Antibodies
Applications:	IHC, WB
Recommended Dilution:	WB: 1000-5000 WB positive control: Mouse skin tissue, HUVEC and Hela cells IHC: 50-200 Positive control: Human colon cancer Predicted cell location: Cytoplasm
Reactivity:	Human, Mouse, Rat
Host:	Rabbit
Isotype:	IgG
Clonality:	Polyclonal
Immunogen:	Fusion protein of human JUP
Formulation:	pH7.4 PBS, 0.05% NaN ₃ , 40% Glycerol
Concentration:	lot specific
Purification:	Antigen affinity purification
Conjugation:	Unconjugated
Storage:	Store at -20°C.
Stability:	1 year
Predicted Protein Size:	82 kDa
Gene Name:	junction plakoglobin
Database Link:	Entrez Gene 3728 Human P14923
Background:	This gene encodes a major cytoplasmic protein which is the only known constituent common to submembranous plaques of both desmosomes and intermediate junctions. This protein forms distinct complexes with cadherins and desmosomal cadherins and is a member of the catenin family since it contains a distinct repeating amino acid motif called the armadillo repeat. Mutation in this gene has been associated with Naxos disease. Alternative splicing occurs in this gene; however, not all transcripts have been fully described.



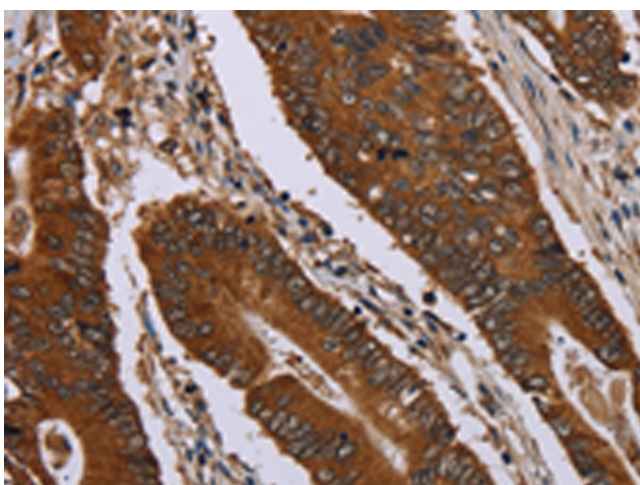
[View online »](#)

Synonyms: ARVD12; CTNNG; Desmoplakin-3; DP3; DP111; gamma-catenin; OTTHUMP00000164735; PDGB; PKGB

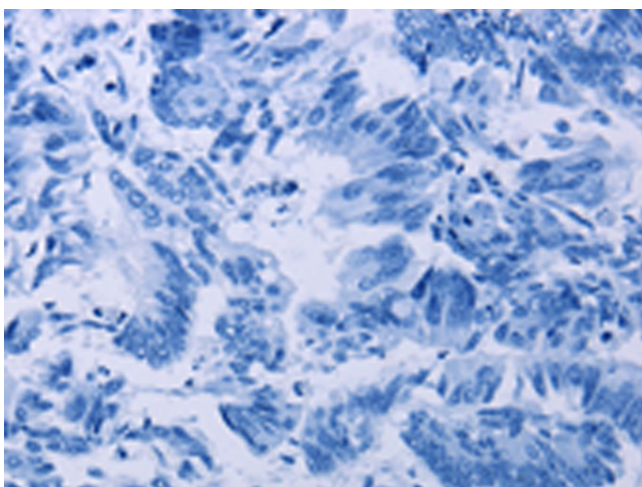
Product images:



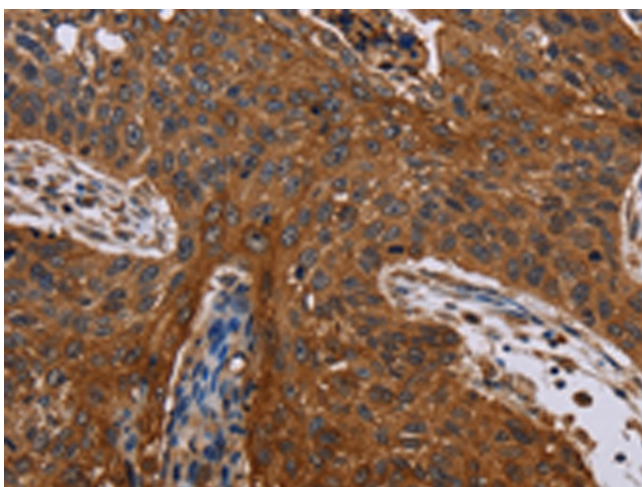
Gel: 6%SDS-PAGE
 Lysate: 40 µg
 Lane 1-3: Mouse skin tissue
 HUVEC cells
 HeLa cells
 Primary antibody: TA364862 (JUP Antibody) at dilution 1/850
 Secondary antibody: Goat anti rabbit IgG at 1/8000 dilution
 Exposure time: 10 seconds



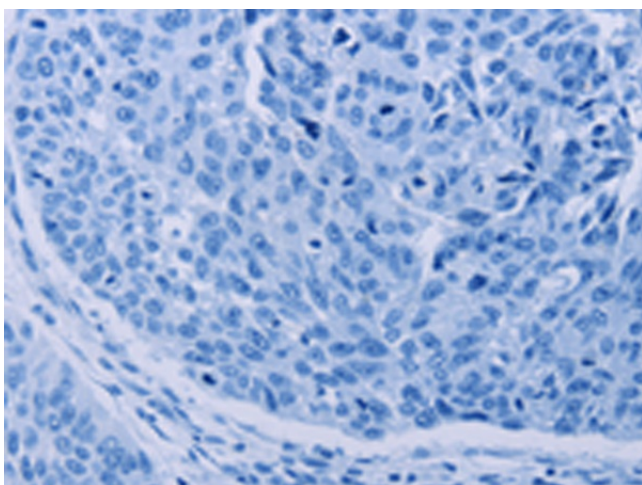
Immunohistochemistry of paraffin-embedded Human colon cancer tissue using TA364862 (JUP Antibody) at dilution 1/40 (Original magnification: ×200)



Immunohistochemistry of paraffin-embedded Human colon cancer tissue using TA364862 (JUP Antibody) at dilution 1/40, treated with fusion protein. (Original magnification: $\times 200$)



Immunohistochemistry of paraffin-embedded Human lung cancer tissue using TA364862 (JUP Antibody) at dilution 1/40 (Original magnification: $\times 200$)



Immunohistochemistry of paraffin-embedded Human lung cancer tissue using TA364862 (JUP Antibody) at dilution 1/40, treated with fusion protein. (Original magnification: $\times 200$)