

Product datasheet for **TA364857S**

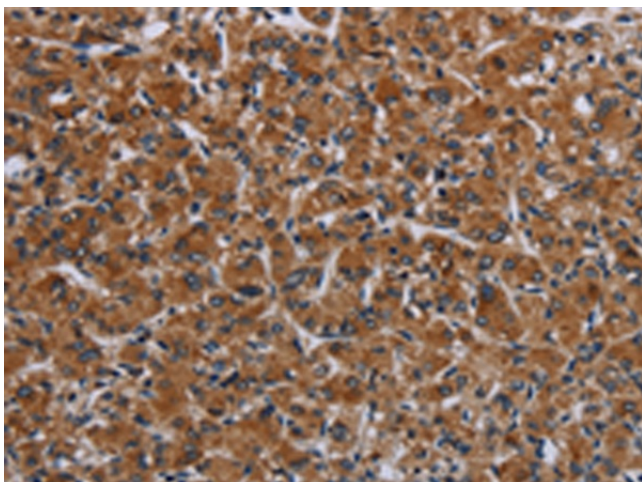
IRGM Rabbit Polyclonal Antibody

Product data:

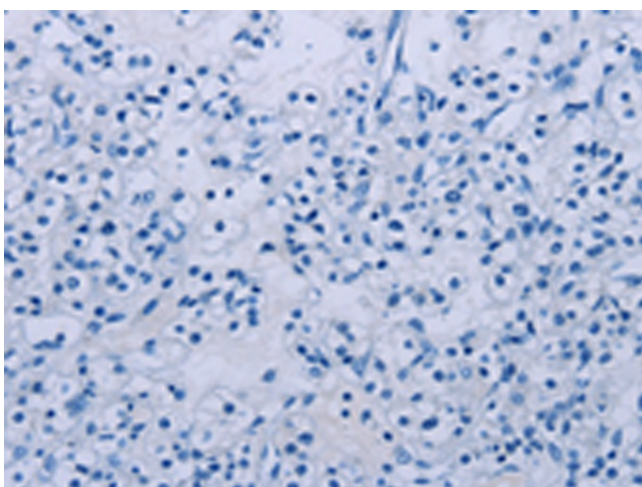
Product Type:	Primary Antibodies
Applications:	IHC
Recommended Dilution:	IHC: 50-200 Positive control: Human prostate cancer Predicted cell location: Cytoplasm
Reactivity:	Human
Host:	Rabbit
Isotype:	IgG
Clonality:	Polyclonal
Immunogen:	Fusion protein of human IRGM
Formulation:	pH7.4 PBS, 0.05% NaN ₃ , 40% Glycerol
Purification:	Antigen affinity purification
Conjugation:	Unconjugated
Storage:	Store at -20°C.
Stability:	1 year
Gene Name:	immunity-related GTPase M
Database Link:	Entrez Gene 345611 Human A1A4Y4
Background:	This gene encodes a member of the p47 immunity-related GTPase family. The encoded protein may play a role in the innate immune response by regulating autophagy formation in response to intracellular pathogens. Polymorphisms that affect the normal expression of this gene are associated with a susceptibility to Crohn's disease and tuberculosis.
Synonyms:	IFI1; IRGM1; LRG-47; LRG47; MGC149263; MGC149264



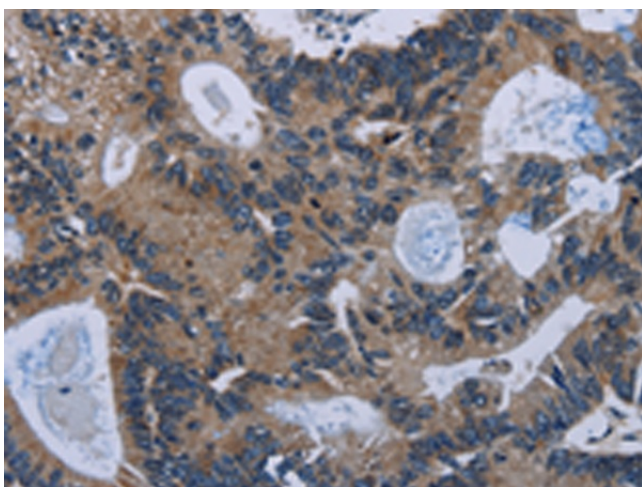
[View online »](#)

Product images:

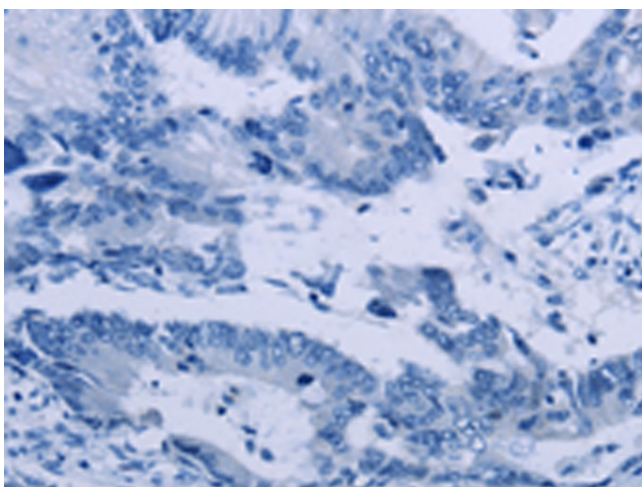
Immunohistochemistry of paraffin-embedded Human prostate cancer tissue using [TA364857] (IRGM Antibody) at dilution 1/50 (Original magnification: $\times 200$)



Immunohistochemistry of paraffin-embedded Human prostate cancer tissue using [TA364857] (IRGM Antibody) at dilution 1/50, treated with fusion protein. (Original magnification: $\times 200$)



Immunohistochemistry of paraffin-embedded Human colon cancer tissue using [TA364857] (IRGM Antibody) at dilution 1/50 (Original magnification: $\times 200$)



Immunohistochemistry of paraffin-embedded Human colon cancer tissue using [TA364857] (IRGM Antibody) at dilution 1/50, treated with fusion protein. (Original magnification: $\times 200$)