

## Product datasheet for **TA364856**

### CD18 (ITGB2) Rabbit Polyclonal Antibody

#### Product data:

Product Type:	Primary Antibodies
Applications:	IHC
Recommended Dilution:	IHC: 25-100 Positive control: Human brain Predicted cell location: Cytoplasm
Reactivity:	Human, Mouse
Host:	Rabbit
Isotype:	IgG
Clonality:	Polyclonal
Immunogen:	Fusion protein of human ITGB2
Formulation:	pH7.4 PBS, 0.05% NaN <sub>3</sub> , 40% Glycerol
Concentration:	lot specific
Purification:	Antigen affinity purification
Conjugation:	Unconjugated
Storage:	Store at -20°C.
Stability:	1 year
Gene Name:	integrin subunit beta 2
Database Link:	<a href="#">Entrez Gene 3689 Human P05107</a>

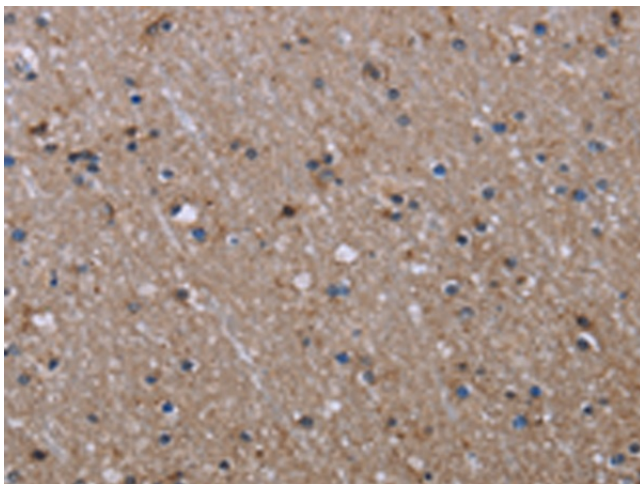
**Background:** The product of this gene belongs to the integrin beta chain family of proteins. Integrins are integral cell-surface proteins composed of an alpha chain and a beta chain. This gene encodes the integrin beta chain beta 2. A given chain may combine with multiple partners resulting in different integrins. For example, beta 2 combines with the alpha L chain to form the integrin LFA-1, and combines with the alpha M chain to form the integrin Mac-1. Integrins are known to participate in cell adhesion as well as cell-surface mediated signalling. Defects in this gene are the cause of leukocyte adhesion deficiency type I (LAD1). Two transcript variants encoding the same protein have been identified for this gene.



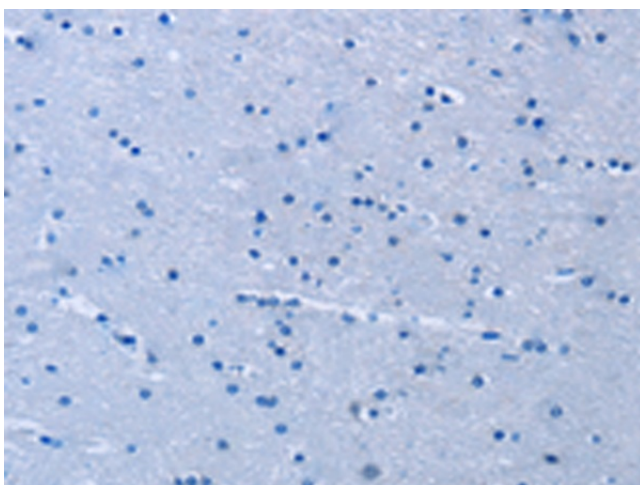
[View online »](#)

**Synonyms:** CD18; LAD; LCAMB; LFA-1; MAC-1; MF17; MFI7; OTTHUMP00000115279; OTTHUMP00000115281; OTTHUMP00000115282

**Product images:**



Immunohistochemistry of paraffin-embedded Human brain tissue using TA364856 (ITGB2 Antibody) at dilution 1/40 (Original magnification: ×200)



Immunohistochemistry of paraffin-embedded Human brain tissue using TA364856 (ITGB2 Antibody) at dilution 1/40, treated with fusion protein. (Original magnification: ×200)