

## Product datasheet for **TA364851**

### Alpha Taxilin (TXLNA) Rabbit Polyclonal Antibody

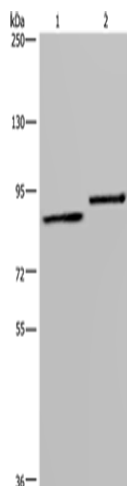
#### Product data:

Product Type:	Primary Antibodies
Applications:	WB
Recommended Dilution:	WB: 500-2000 WB positive control: A549 and 293T cells
Reactivity:	Human, Mouse
Host:	Rabbit
Isotype:	IgG
Clonality:	Polyclonal
Immunogen:	Fusion protein of human TXLNA
Formulation:	pH7.4 PBS, 0.05% NaN <sub>3</sub> , 40% Glycerol
Concentration:	lot specific
Purification:	Antigen affinity purification
Conjugation:	Unconjugated
Storage:	Store at -20°C.
Stability:	1 year
Predicted Protein Size:	62 kDa
Gene Name:	taxilin alpha
Database Link:	<a href="#">Entrez Gene 200081 Human P40222</a>
Background:	$\alpha$ -taxilin is a novel binding partner of the syntaxin family which is implicated in intracellular vesicle trafficking. Through its C-terminal coiled-coil region, $\alpha$ -taxilin interacts with the nascent polypeptide-associated complex (NAC), which acts as a transcriptional coactivator.
Synonyms:	alpha-taxilin; DKFZp451J0118; IL14; MGC118870; MGC118871; OTTHUMP00000004650; RP4-622L5.4; taxilin; TXLN



[View online »](#)

## Product images:



Gel: 6%SDS-PAGE

Lysate: 40  $\mu$ g

Lane 1-2: A549 cells

293T cells

Primary antibody: TA364851 (TXLNA Antibody) at dilution 1/300

Secondary antibody: Goat anti rabbit IgG at 1/8000 dilution

Exposure time: 10 seconds