

## Product datasheet for **TA364834S**

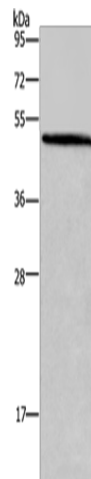
### HOMER1 Rabbit Polyclonal Antibody

#### Product data:

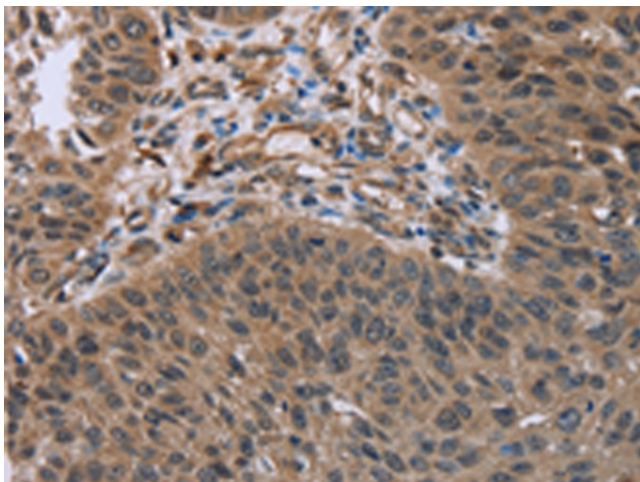
Product Type:	Primary Antibodies
Applications:	IHC, WB
Recommended Dilution:	WB: 500-2000 WB positive control: Mouse brain tissue IHC: 50-200 Positive control: Human lung cancer Predicted cell location: Cytoplasm
Reactivity:	Human, Mouse, Rat
Host:	Rabbit
Isotype:	IgG
Clonality:	Polyclonal
Immunogen:	Fusion protein of human HOMER1
Formulation:	pH7.4 PBS, 0.05% NaN <sub>3</sub> , 40% Glycerol
Purification:	Antigen affinity purification
Conjugation:	Unconjugated
Storage:	Store at -20°C.
Stability:	1 year
Predicted Protein Size:	40 kDa
Gene Name:	homer scaffolding protein 1
Database Link:	<a href="#">Entrez Gene 9456 Human Q86YM7</a>
Background:	This gene encodes a member of the homer family of dendritic proteins. Members of this family regulate group 1 metabotropic glutamate receptor function.
Synonyms:	HOMER; HOMER-1B; HOMER1A; HOMER1B; HOMER1C; SYN47; Ves-1



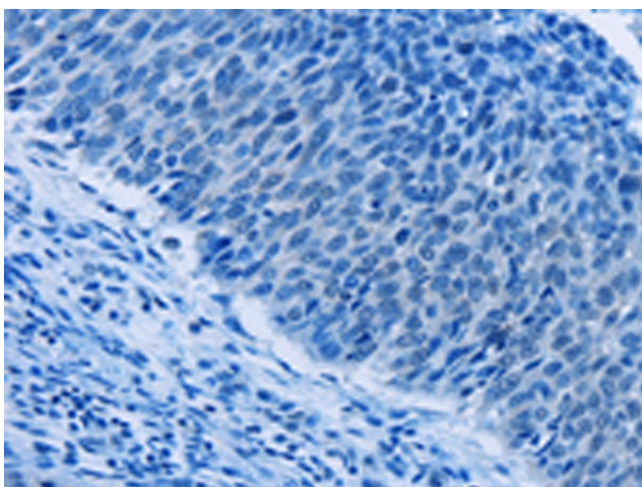
[View online »](#)

**Product images:**

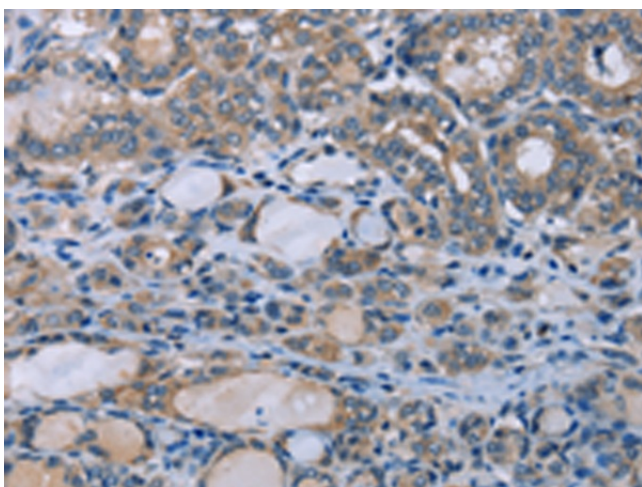
Gel: 10%SDS-PAGE  
Lysate: 40 µg  
Lane: Mouse brain tissue  
Primary antibody: [TA364834] (HOMER1 Antibody) at dilution 1/400  
Secondary antibody: Goat anti rabbit IgG at 1/8000 dilution  
Exposure time: 10 seconds



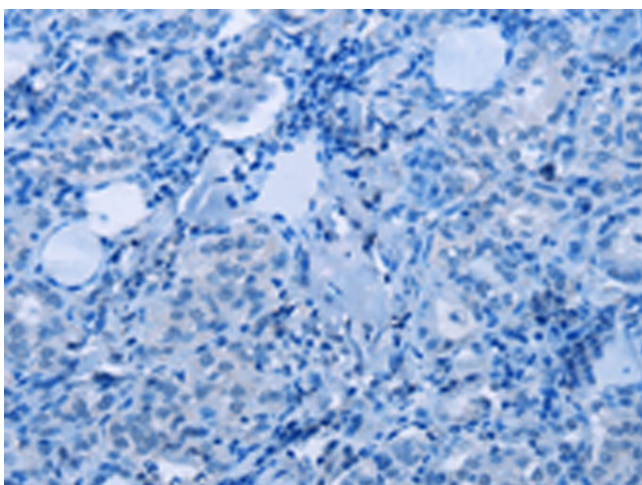
Immunohistochemistry of paraffin-embedded Human lung cancer tissue using [TA364834] (HOMER1 Antibody) at dilution 1/50 (Original magnification: ×200)



Immunohistochemistry of paraffin-embedded Human lung cancer tissue using [TA364834] (HOMER1 Antibody) at dilution 1/50, treated with fusion protein. (Original magnification:  $\times 200$ )



Immunohistochemistry of paraffin-embedded Human thyroid cancer tissue using [TA364834] (HOMER1 Antibody) at dilution 1/50 (Original magnification:  $\times 200$ )



Immunohistochemistry of paraffin-embedded Human thyroid cancer tissue using [TA364834] (HOMER1 Antibody) at dilution 1/50, treated with fusion protein. (Original magnification:  $\times 200$ )