

Product datasheet for **TA364832S**

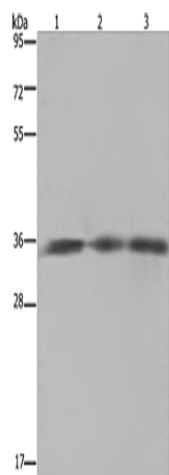
HMGCL Rabbit Polyclonal Antibody

Product data:

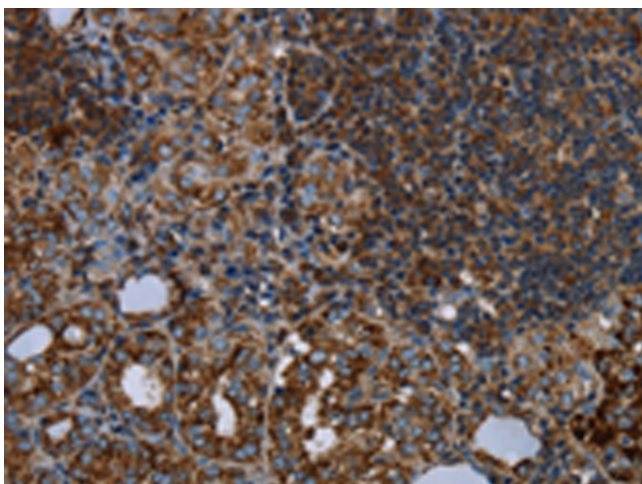
Product Type:	Primary Antibodies
Applications:	IHC, WB
Recommended Dilution:	WB: 200-1000 WB positive control: SKOV3 cells, mouse heart and brain tissue IHC: 50-200 Positive control: Human thyroid cancer Predicted cell location: Cytoplasm
Reactivity:	Human, Mouse, Rat
Host:	Rabbit
Isotype:	IgG
Clonality:	Polyclonal
Immunogen:	Fusion protein of human HMGCL
Formulation:	pH7.4 PBS, 0.05% NaN ₃ , 40% Glycerol
Purification:	Antigen affinity purification
Conjugation:	Unconjugated
Storage:	Store at -20°C.
Stability:	1 year
Predicted Protein Size:	34 kDa
Gene Name:	3-hydroxymethyl-3-methylglutaryl-CoA lyase
Database Link:	Entrez Gene 3155 Human P35914
Background:	The protein encoded by this gene belongs to the HMG-CoA lyase family. It is a mitochondrial enzyme that catalyzes the final step of leucine degradation and plays a key role in ketone body formation. Mutations in this gene are associated with HMG-CoA lyase deficiency. Alternatively spliced transcript variants encoding different isoforms have been found for this gene.
Synonyms:	HL; hydroxymethylglutaricaciduria



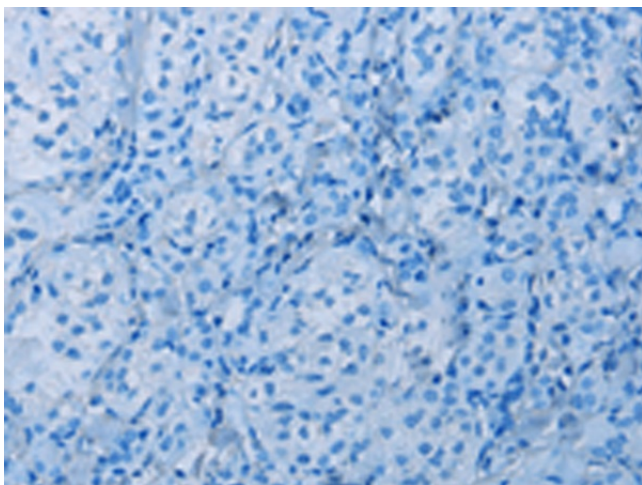
[View online »](#)

Product images:

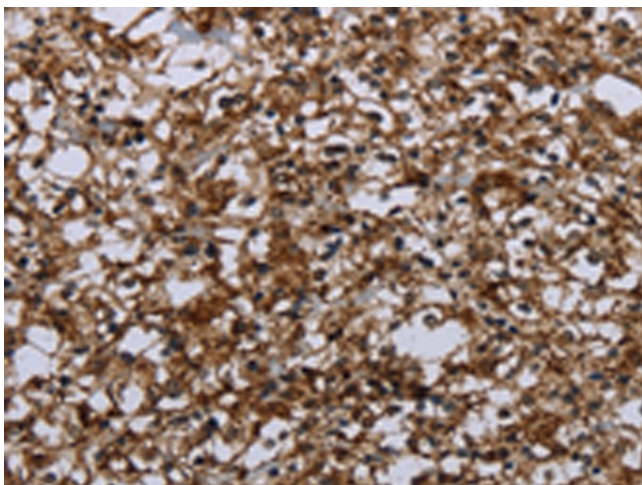
Gel: 8%SDS-PAGE
Lysate: 40 µg
Lane 1-3: SKOV3 cells
mouse heart tissue
Mouse brain tissue
Primary antibody: [TA364832] (HMGCL Antibody)
at dilution 1/150
Secondary antibody: Goat anti rabbit IgG at
1/8000 dilution
Exposure time: 5 seconds



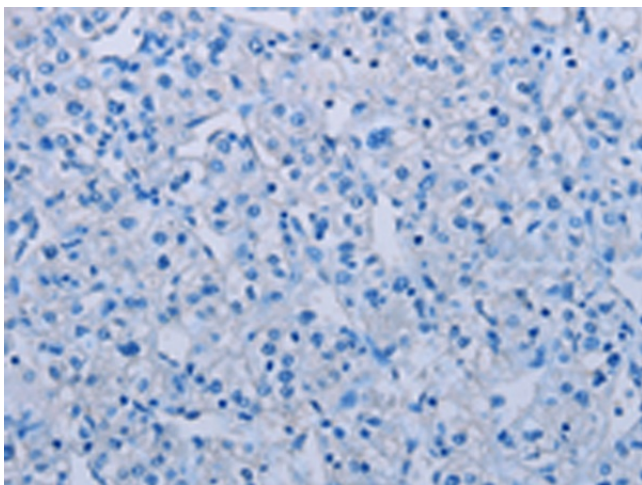
Immunohistochemistry of paraffin-embedded
Human thyroid cancer tissue using [TA364832]
(HMGCL Antibody) at dilution 1/20 (Original
magnification: ×200)



Immunohistochemistry of paraffin-embedded Human thyroid cancer tissue using [TA364832] (HMGCL Antibody) at dilution 1/20, treated with fusion protein. (Original magnification: $\times 200$)



Immunohistochemistry of paraffin-embedded Human prostate cancer tissue using [TA364832] (HMGCL Antibody) at dilution 1/20 (Original magnification: $\times 200$)



Immunohistochemistry of paraffin-embedded Human prostate cancer tissue using [TA364832] (HMGCL Antibody) at dilution 1/20, treated with fusion protein. (Original magnification: $\times 200$)