

## Product datasheet for **TA364832**

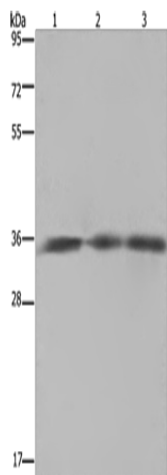
### HMGCL Rabbit Polyclonal Antibody

#### Product data:

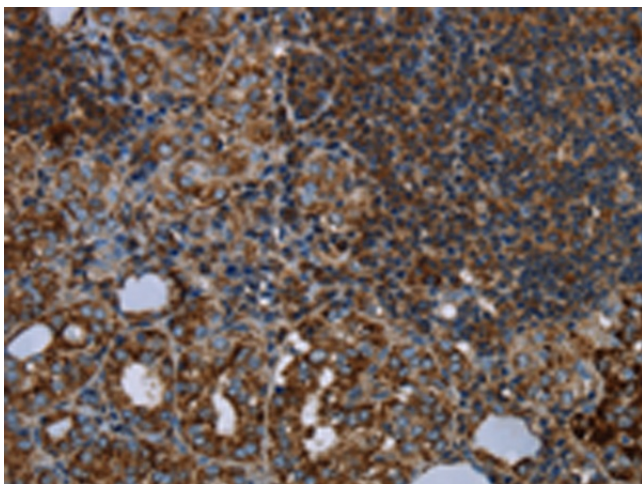
|                         |  |
|-------------------------|--|
| Product Type:           | Primary Antibodies   |
| Applications:           | IHC, WB  |
| Recommended Dilution:   | WB: 200-1000<br>WB positive control: SKOV3 cells, mouse heart and brain tissue<br>IHC: 50-200<br>Positive control: Human thyroid cancer<br>Predicted cell location: Cytoplasm  |
| Reactivity:             | Human, Mouse, Rat  |
| Host:                   | Rabbit   |
| Isotype:                | IgG  |
| Clonality:              | Polyclonal   |
| Immunogen:              | Fusion protein of human HMGCL  |
| Formulation:            | pH7.4 PBS, 0.05% NaN <sub>3</sub> , 40% Glycerol   |
| Concentration:          | lot specific   |
| Purification:           | Antigen affinity purification  |
| Conjugation:            | Unconjugated   |
| Storage:                | Store at -20°C.  |
| Stability:              | 1 year   |
| Predicted Protein Size: | 34 kDa   |
| Gene Name:              | 3-hydroxymethyl-3-methylglutaryl-CoA lyase   |
| Database Link:          | <a href="#">Entrez Gene 3155 Human P35914</a>  |
| Background:             | The protein encoded by this gene belongs to the HMG-CoA lyase family. It is a mitochondrial enzyme that catalyzes the final step of leucine degradation and plays a key role in ketone body formation. Mutations in this gene are associated with HMG-CoA lyase deficiency. Alternatively spliced transcript variants encoding different isoforms have been found for this gene. |
| Synonyms:               | HL; hydroxymethylglutaricaciduria  |



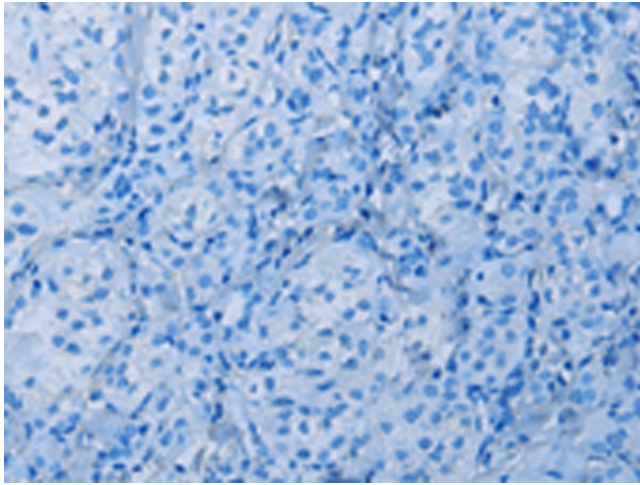
[View online »](#)

**Product images:**

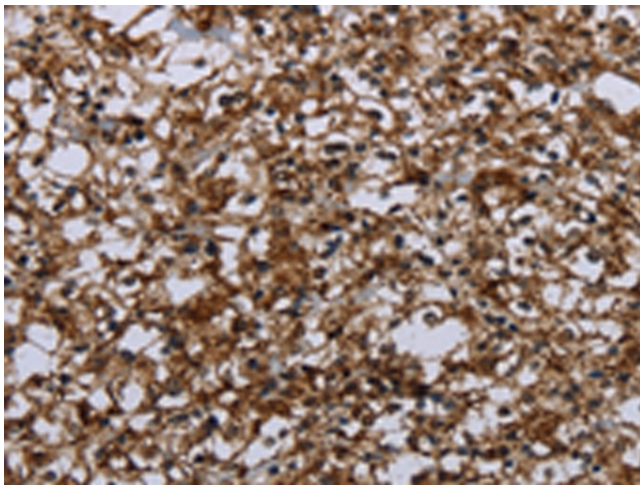
Gel: 8%SDS-PAGE  
Lysate: 40 µg  
Lane 1-3: SKOV3 cells  
mouse heart tissue  
Mouse brain tissue  
Primary antibody: TA364832 (HMGCL Antibody)  
at dilution 1/150  
Secondary antibody: Goat anti rabbit IgG at  
1/8000 dilution  
Exposure time: 5 seconds



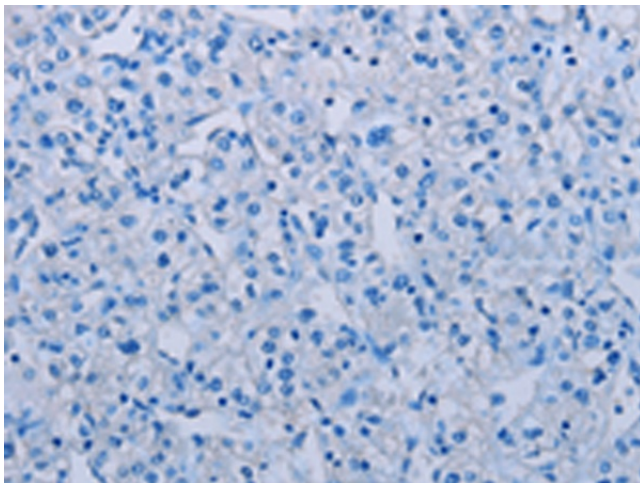
Immunohistochemistry of paraffin-embedded  
Human thyroid cancer tissue using TA364832  
(HMGCL Antibody) at dilution 1/20 (Original  
magnification: ×200)



Immunohistochemistry of paraffin-embedded Human thyroid cancer tissue using TA364832 (HMGCL Antibody) at dilution 1/20, treated with fusion protein. (Original magnification:  $\times 200$ )



Immunohistochemistry of paraffin-embedded Human prostate cancer tissue using TA364832 (HMGCL Antibody) at dilution 1/20 (Original magnification:  $\times 200$ )



Immunohistochemistry of paraffin-embedded Human prostate cancer tissue using TA364832 (HMGCL Antibody) at dilution 1/20, treated with fusion protein. (Original magnification:  $\times 200$ )