

Product datasheet for **TA364829S**

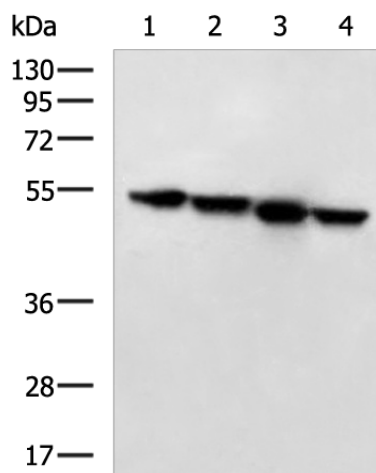
LIPC Rabbit Polyclonal Antibody

Product data:

Product Type:	Primary Antibodies
Applications:	IHC, WB
Recommended Dilution:	WB: 1000-5000 WB positive control: NIH/3T3, K562, HT29 and LOVO cell lysates IHC: 100-300 Positive control: Human tonsil Predicted cell location: Secreted
Reactivity:	Human, Mouse
Host:	Rabbit
Isotype:	IgG
Clonality:	Polyclonal
Immunogen:	Fusion protein of human LIPC
Formulation:	pH7.4 PBS, 0.05% NaN ₃ , 40% Glycerol
Purification:	Antigen affinity purification
Conjugation:	Unconjugated
Storage:	Store at -20°C.
Stability:	1 year
Predicted Protein Size:	56 kDa
Gene Name:	lipase C, hepatic type
Database Link:	Entrez Gene 3990 Human P11150
Background:	LIPC encodes hepatic triglyceride lipase, which is expressed in liver. LIPC has the dual functions of triglyceride hydrolase and ligand/bridging factor for receptor-mediated lipoprotein uptake.
Synonyms:	HDLCQ12; HL; HTGL; LIPH



[View online »](#)

Product images:

Gel: 8%SDS-PAGE

Lysate: 40 µg

Lane 1-4: NIH/3T3

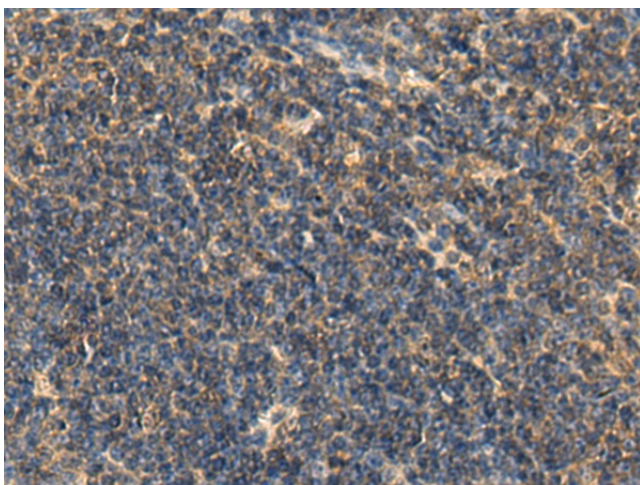
K562

HT29 and LOVO cell lysates

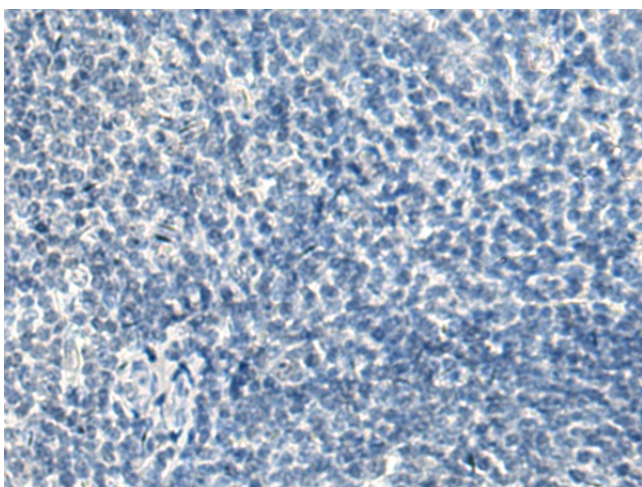
Primary antibody: [TA364829] (LIPC Antibody) at dilution 1/800

Secondary antibody: Goat anti rabbit IgG at 1/5000 dilution

Exposure time: 10 seconds



Immunohistochemistry of paraffin-embedded Human tonsil tissue using [TA364829] (LIPC Antibody) at dilution 1/120 (Original magnification: ×200)



Immunohistochemistry of paraffin-embedded Human tonsil tissue using [TA364829] (LIPC Antibody) at dilution 1/120, treated with fusion protein. (Original magnification: $\times 200$)