

Product datasheet for **TA364829**

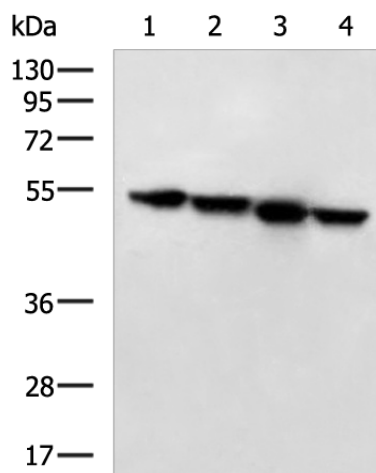
LIPC Rabbit Polyclonal Antibody

Product data:

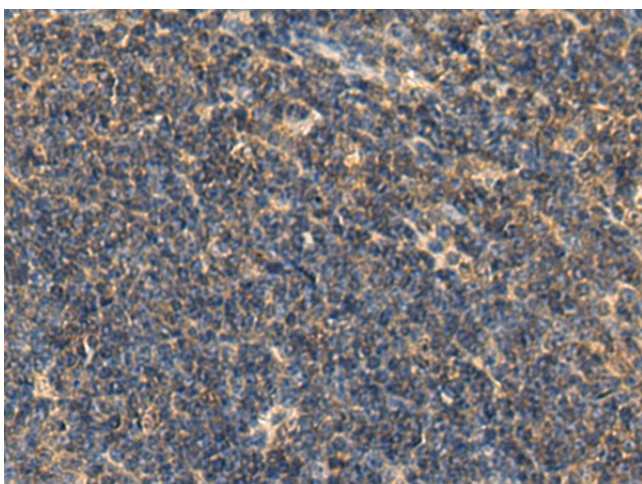
Product Type:	Primary Antibodies
Applications:	IHC, WB
Recommended Dilution:	WB: 1000-5000 WB positive control: NIH/3T3, K562, HT29 and LOVO cell lysates IHC: 100-300 Positive control: Human tonsil Predicted cell location: Secreted
Reactivity:	Human, Mouse
Host:	Rabbit
Isotype:	IgG
Clonality:	Polyclonal
Immunogen:	Fusion protein of human LIPC
Formulation:	pH7.4 PBS, 0.05% NaN ₃ , 40% Glycerol
Concentration:	lot specific
Purification:	Antigen affinity purification
Conjugation:	Unconjugated
Storage:	Store at -20°C.
Stability:	1 year
Predicted Protein Size:	56 kDa
Gene Name:	lipase C, hepatic type
Database Link:	Entrez Gene 3990 Human P11150
Background:	LIPC encodes hepatic triglyceride lipase, which is expressed in liver. LIPC has the dual functions of triglyceride hydrolase and ligand/bridging factor for receptor-mediated lipoprotein uptake.
Synonyms:	HDLCQ12; HL; HTGL; LIPH



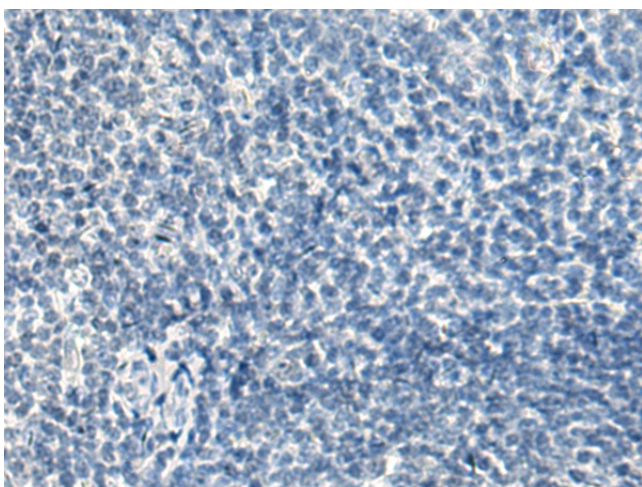
[View online »](#)

Product images:

Gel: 8%SDS-PAGE
Lysate: 40 μ g
Lane 1-4: NIH/3T3
K562
HT29 and LOVO cell lysates
Primary antibody: TA364829 (LIPC Antibody) at dilution 1/800
Secondary antibody: Goat anti rabbit IgG at 1/5000 dilution
Exposure time: 10 seconds



Immunohistochemistry of paraffin-embedded Human tonsil tissue using TA364829 (LIPC Antibody) at dilution 1/120 (Original magnification: \times 200)



Immunohistochemistry of paraffin-embedded Human tonsil tissue using TA364829 (LIPC Antibody) at dilution 1/120, treated with fusion protein. (Original magnification: x200)