

Product datasheet for **TA364828S**

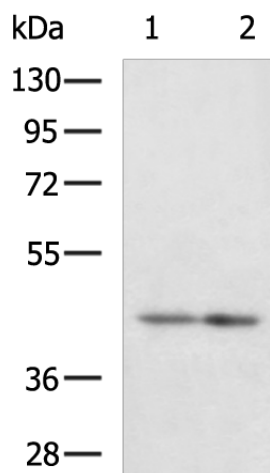
LETMD1 Rabbit Polyclonal Antibody

Product data:

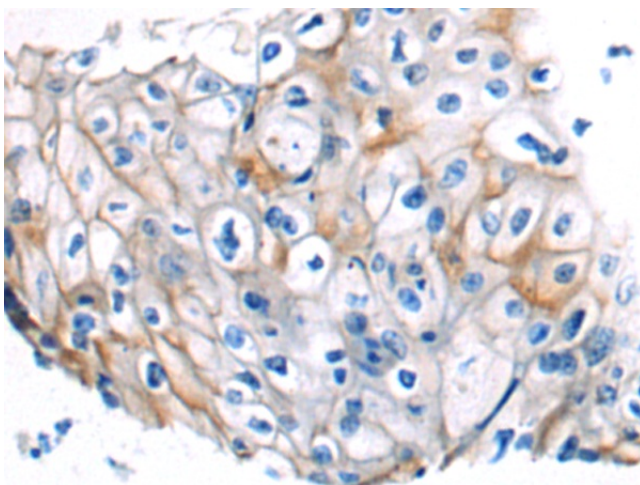
Product Type:	Primary Antibodies
Applications:	IHC, WB
Recommended Dilution:	WB: 1000-5000 WB positive control: Mouse liver tissue, Mouse brain tissue lysates IHC: 50-200 Positive control: Human esophagus cancer Predicted cell location: Cytoplasm and Cell membrane
Reactivity:	Human, Mouse
Host:	Rabbit
Isotype:	IgG
Clonality:	Polyclonal
Immunogen:	Fusion protein of human LETMD1
Formulation:	pH7.4 PBS, 0.05% NaN ₃ , 40% Glycerol
Purification:	Antigen affinity purification
Conjugation:	Unconjugated
Storage:	Store at -20°C.
Stability:	1 year
Predicted Protein Size:	42 kDa
Gene Name:	LETM1 domain containing 1
Database Link:	Entrez Gene 25875 Human Q6P1Q0
Background:	This gene encodes a mitochondrial outer membrane protein. It has a potential role in tumorigenesis, which may result from negative regulation of the p53 tumor suppressor gene. Alternatively spliced transcript variants have been noted for this gene.
Synonyms:	1110019O13Rik; DKFZp586A011; HCCR-2; HCCR1; HCRR-2



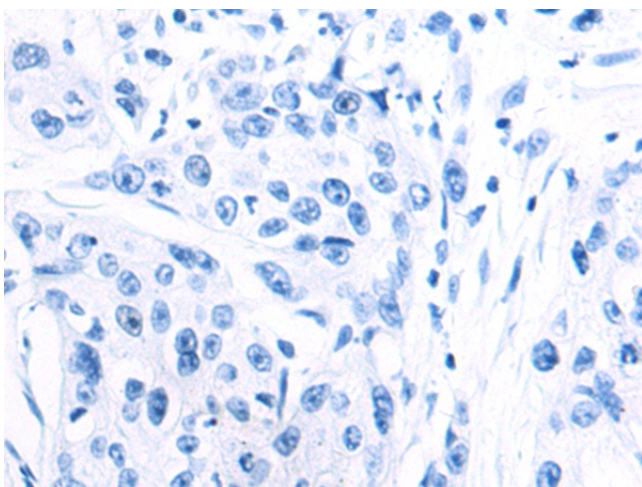
[View online »](#)

Product images:


Gel: 8%SDS-PAGE
 Lysate: 40 µg
 Lane 1-2: Mouse liver tissue
 Mouse brain tissue lysates
 Primary antibody: [TA364828] (LETMD1 Antibody)
 at dilution 1/1200
 Secondary antibody: Goat anti rabbit IgG at
 1/5000 dilution
 Exposure time: 2 minutes



Immunohistochemistry of paraffin-embedded
 Human esophagus cancer tissue using
 [TA364828] (LETMD1 Antibody) at dilution 1/75
 (Original magnification: ×200)



Immunohistochemistry of paraffin-embedded Human esophagus cancer tissue using [TA364828] (LETMD1 Antibody) at dilution 1/75, treated with fusion protein. (Original magnification: $\times 200$)