

Product datasheet for **TA364828**

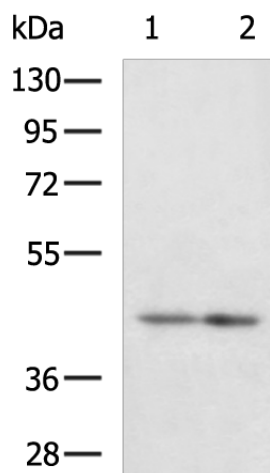
LETMD1 Rabbit Polyclonal Antibody

Product data:

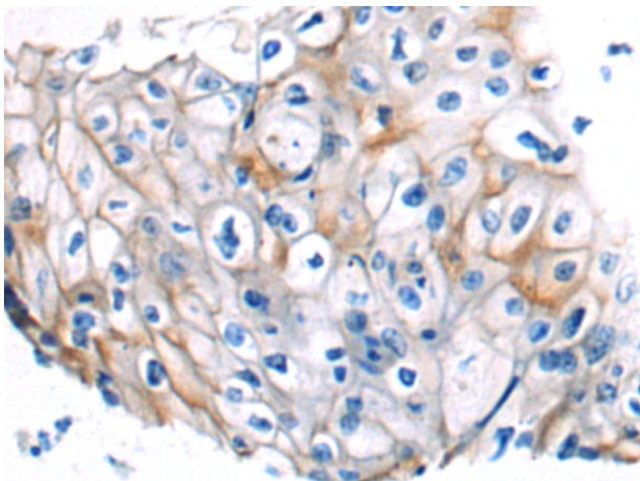
| | |
|-------------------------|--|
| Product Type: | Primary Antibodies |
| Applications: | IHC, WB |
| Recommended Dilution: | WB: 1000-5000 WB positive control: Mouse liver tissue, Mouse brain tissue lysates IHC: 50-200 Positive control: Human esophagus cancer Predicted cell location: Cytoplasm and Cell membrane |
| Reactivity: | Human, Mouse |
| Host: | Rabbit |
| Isotype: | IgG |
| Clonality: | Polyclonal |
| Immunogen: | Fusion protein of human LETMD1 |
| Formulation: | pH7.4 PBS, 0.05% NaN ₃ , 40% Glycerol |
| Concentration: | lot specific |
| Purification: | Antigen affinity purification |
| Conjugation: | Unconjugated |
| Storage: | Store at -20°C. |
| Stability: | 1 year |
| Predicted Protein Size: | 42 kDa |
| Gene Name: | LETM1 domain containing 1 |
| Database Link: | Entrez Gene 25875 Human Q6P1Q0 |
| Background: | This gene encodes a mitochondrial outer membrane protein. It has a potential role in tumorigenesis, which may result from negative regulation of the p53 tumor suppressor gene. Alternatively spliced transcript variants have been noted for this gene. |
| Synonyms: | 1110019O13Rik; DKFZp586A011; HCCR-2; HCCR1; HCRR-2 |



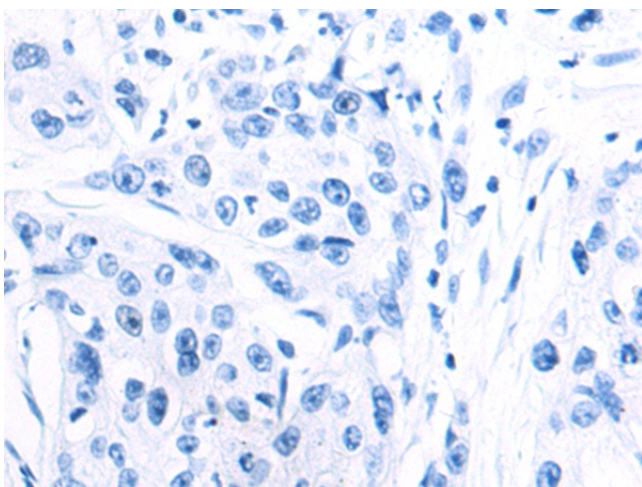
[View online »](#)

Product images:


Gel: 8%SDS-PAGE
 Lysate: 40 µg
 Lane 1-2: Mouse liver tissue
 Mouse brain tissue lysates
 Primary antibody: TA364828 (LETMD1 Antibody)
 at dilution 1/1200
 Secondary antibody: Goat anti rabbit IgG at
 1/5000 dilution
 Exposure time: 2 minutes



Immunohistochemistry of paraffin-embedded
 Human esophagus cancer tissue using TA364828
 (LETMD1 Antibody) at dilution 1/75 (Original
 magnification: ×200)



Immunohistochemistry of paraffin-embedded Human esophagus cancer tissue using TA364828 (LETMD1 Antibody) at dilution 1/75, treated with fusion protein. (Original magnification: ×200)