

Product datasheet for **TA364822**

Myoglobin (MB) Rabbit Polyclonal Antibody

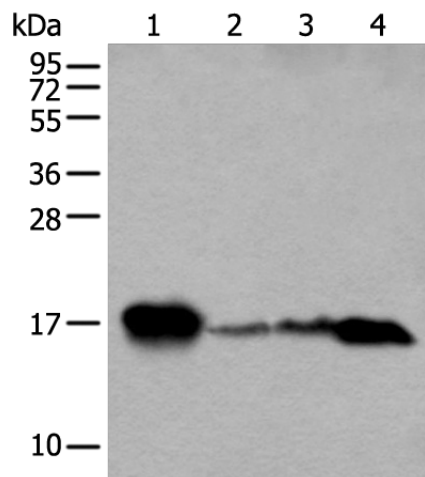
Product data:

Product Type:	Primary Antibodies
Applications:	WB
Recommended Dilution:	WB: 500-2000 WB positive control: Human muscle tissue,Rat heart tissue,Mouse heart tissue and Human heart tissue lysates
Reactivity:	Human, Mouse, Rat
Host:	Rabbit
Isotype:	IgG
Clonality:	Polyclonal
Immunogen:	Full length fusion protein
Formulation:	pH7.4 PBS, 0.05% NaN ₃ , 40% Glycerol
Concentration:	lot specific
Purification:	Antigen affinity purification
Conjugation:	Unconjugated
Storage:	Store at -20°C.
Stability:	1 year
Predicted Protein Size:	17 kDa
Gene Name:	myoglobin
Database Link:	Entrez Gene 4151 Human P02144
Background:	This gene encodes a member of the globin superfamily and is expressed in skeletal and cardiac muscles. The encoded protein is a haemoprotein contributing to intracellular oxygen storage and transcellular facilitated diffusion of oxygen. At least three alternatively spliced transcript variants encoding the same protein have been reported.
Synonyms:	MGC13548; myoglobin; OTTHUMP00000197922; PVALB



[View online »](#)

Product images:



Gel: 12%SDS-PAGE

Lysate: 40 μ g

Lane 1-4: Human muscle tissue

Rat heart tissue

Mouse heart tissue and Human heart tissue
lysates

Primary antibody: TA364822 (MB Antibody) at
dilution 1/250

Secondary antibody: Goat anti rabbit IgG at
1/8000 dilution

Exposure time: 1 second