

## Product datasheet for **TA364820**

### GM130 (GOLGA2) Rabbit Polyclonal Antibody

#### Product data:

Product Type:	Primary Antibodies
Applications:	IHC, WB
Recommended Dilution:	WB: 500-2000 WB positive control: 293T, Hela, A172 and A549 cells IHC: 100-300 Positive control: Human colon cancer Predicted cell location: Cytoplasm or Nucleus
Reactivity:	Human
Host:	Rabbit
Isotype:	IgG
Clonality:	Polyclonal
Immunogen:	Fusion protein of human GOLGA2
Formulation:	pH7.4 PBS, 0.05% NaN <sub>3</sub> , 40% Glycerol
Concentration:	lot specific
Purification:	Antigen affinity purification
Conjugation:	Unconjugated
Storage:	Store at -20°C.
Stability:	1 year
Predicted Protein Size:	113 kDa
Gene Name:	golgin A2
Database Link:	<a href="#">Entrez Gene 2801 Human Q08379</a>



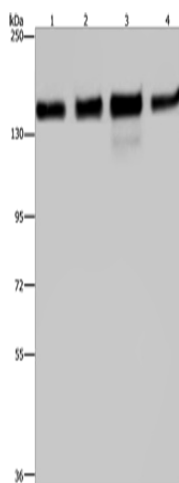
[View online »](#)

**Background:**

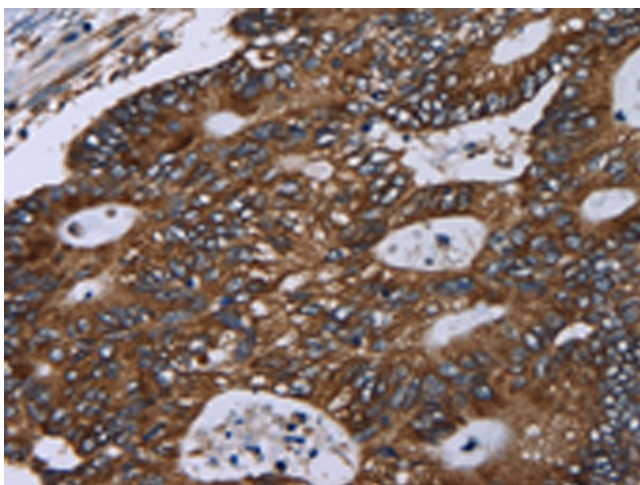
The Golgi apparatus, which participates in glycosylation and transport of proteins and lipids in the secretory pathway, consists of a series of stacked cisternae (flattened membrane sacs). Interactions between the Golgi and microtubules are thought to be important for the reorganization of the Golgi after it fragments during mitosis. This gene encodes one of the golgins, a family of proteins localized to the Golgi. This encoded protein has been postulated to play roles in the stacking of Golgi cisternae and in vesicular transport. Several alternatively spliced transcript variants of this gene have been described, but the full-length nature of these variants has not been determined.

**Synonyms:**

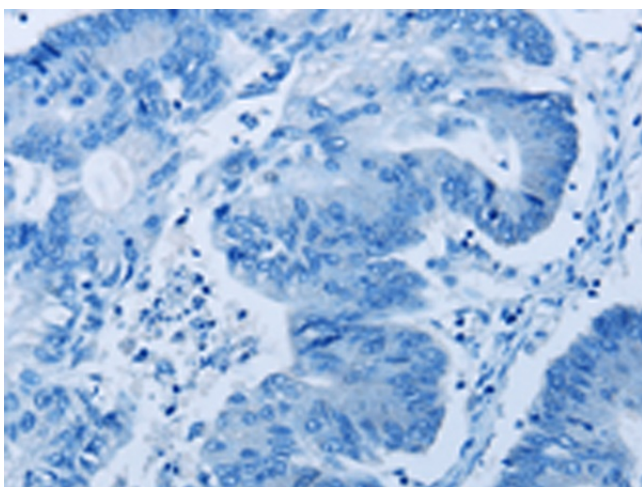
GM130; golgin-95; MGC20672

**Product images:**


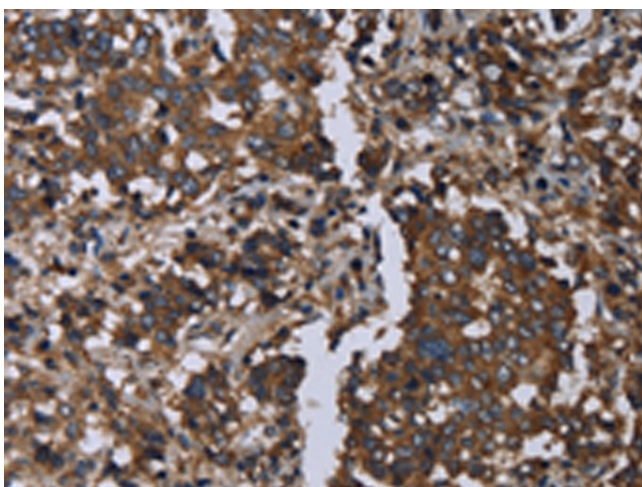
Gel: 6%SDS-PAGE  
Lysate: 40 µg  
Lane 1-4: 293T cells  
Hela cells  
A172 cells  
A549 cells  
Primary antibody: TA364820 (GOLGA2 Antibody)  
at dilution 1/600  
Secondary antibody: Goat anti rabbit IgG at  
1/8000 dilution  
Exposure time: 10 seconds



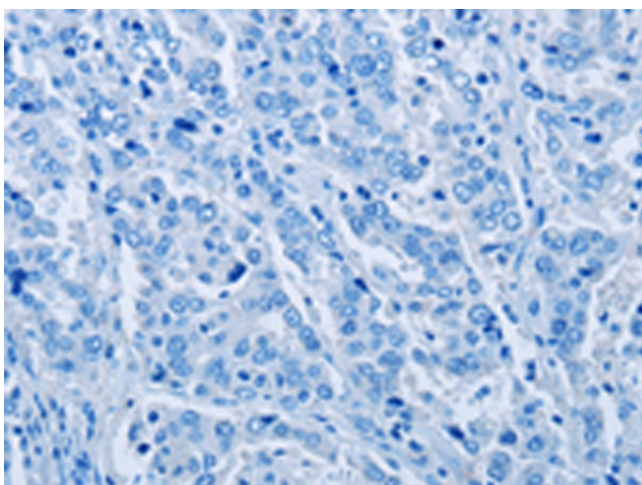
Immunohistochemistry of paraffin-embedded  
Human colon cancer tissue using TA364820  
(GOLGA2 Antibody) at dilution 1/60 (Original  
magnification: ×200)



Immunohistochemistry of paraffin-embedded Human colon cancer tissue using TA364820 (GOLGA2 Antibody) at dilution 1/60, treated with fusion protein. (Original magnification: ×200)



Immunohistochemistry of paraffin-embedded Human liver cancer tissue using TA364820 (GOLGA2 Antibody) at dilution 1/60 (Original magnification: ×200)



Immunohistochemistry of paraffin-embedded Human liver cancer tissue using TA364820 (GOLGA2 Antibody) at dilution 1/60, treated with fusion protein. (Original magnification: ×200)