

## Product datasheet for **TA364819**

### Glutamine Synthetase (GLUL) Rabbit Polyclonal Antibody

#### Product data:

Product Type:	Primary Antibodies
Applications:	IHC, WB
Recommended Dilution:	WB: 500-2000 WB positive control: Mouse liver and brain tissue IHC: 100-300 Positive control: Human colon cancer Predicted cell location: Cytoplasm
Reactivity:	Human, Mouse, Rat
Host:	Rabbit
Isotype:	IgG
Clonality:	Polyclonal
Immunogen:	Fusion protein of human GLUL
Formulation:	pH7.4 PBS, 0.05% NaN <sub>3</sub> , 40% Glycerol
Concentration:	lot specific
Purification:	Antigen affinity purification
Conjugation:	Unconjugated
Storage:	Store at -20°C.
Stability:	1 year
Predicted Protein Size:	42 kDa
Gene Name:	glutamate-ammonia ligase
Database Link:	<a href="#">Entrez Gene 2752 Human P15104</a>



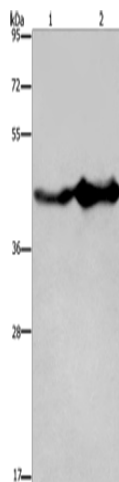
[View online »](#)

**Background:**

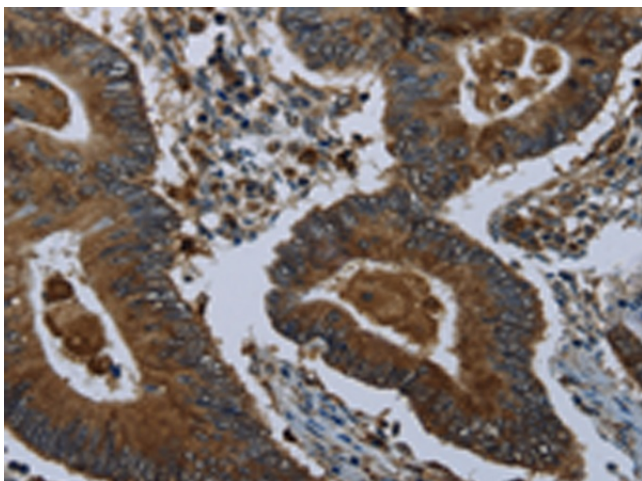
The protein encoded by this gene belongs to the glutamine synthetase family. It catalyzes the synthesis of glutamine from glutamate and ammonia. Glutamine is a main source of energy and is involved in cell proliferation, inhibition of apoptosis, and cell signaling. This gene is expressed during early fetal stages, and plays an important role in controlling body pH by removing ammonia from circulation. Mutations in this gene are associated with congenital glutamine deficiency. Several alternatively spliced transcript variants have been found for this gene.

**Synonyms:**

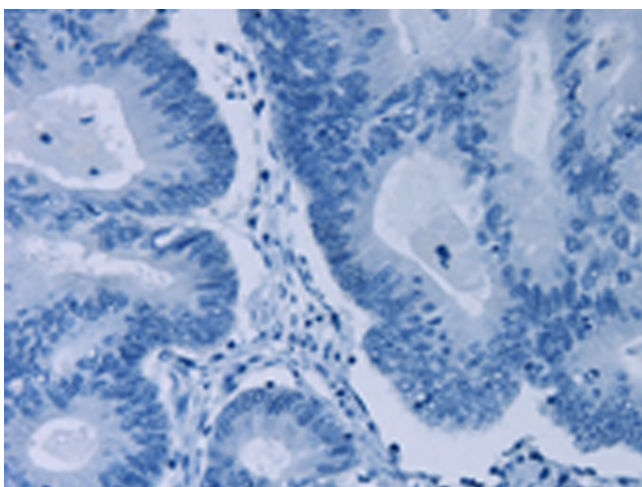
GLNS; GS; OTTHUMP00000035525; PIG43; PIG59

**Product images:**

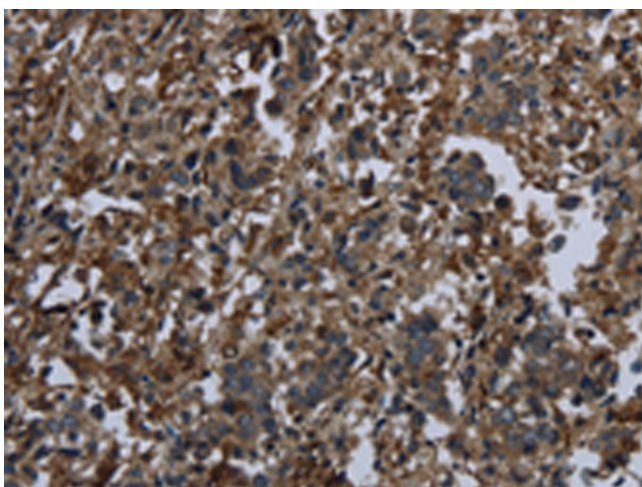
Gel: 8%SDS-PAGE  
Lysate: 40  $\mu$ g  
Lane 1-2: Mouse liver tissue  
Mouse brain tissue  
Primary antibody: TA364819 (GLUL Antibody) at dilution 1/600  
Secondary antibody: Goat anti rabbit IgG at 1/8000 dilution  
Exposure time: 10 seconds



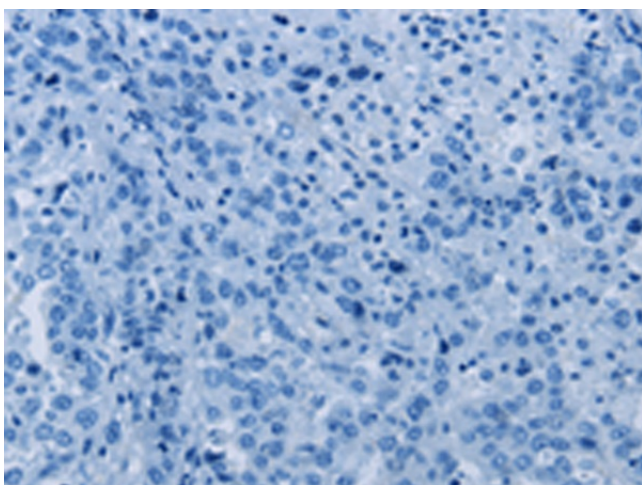
Immunohistochemistry of paraffin-embedded Human colon cancer tissue using TA364819 (GLUL Antibody) at dilution 1/60 (Original magnification:  $\times$ 200)



Immunohistochemistry of paraffin-embedded Human colon cancer tissue using TA364819 (GLUL Antibody) at dilution 1/60, treated with fusion protein. (Original magnification: ×200)



Immunohistochemistry of paraffin-embedded Human liver cancer tissue using TA364819 (GLUL Antibody) at dilution 1/60 (Original magnification: ×200)



Immunohistochemistry of paraffin-embedded Human liver cancer tissue using TA364819 (GLUL Antibody) at dilution 1/60, treated with fusion protein. (Original magnification: ×200)