

Product datasheet for **TA364814S**

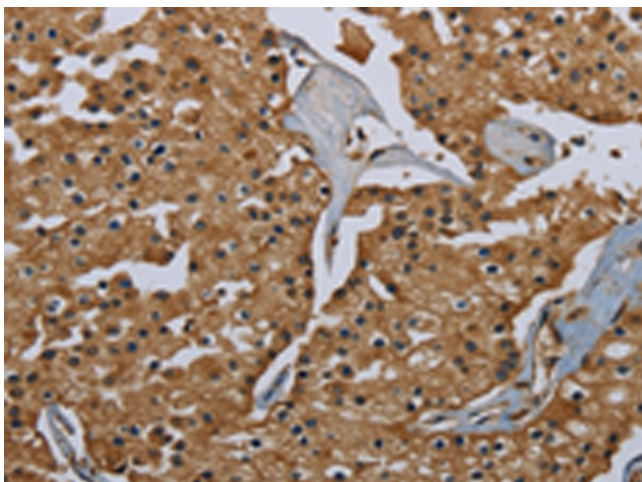
GBP5 Rabbit Polyclonal Antibody

Product data:

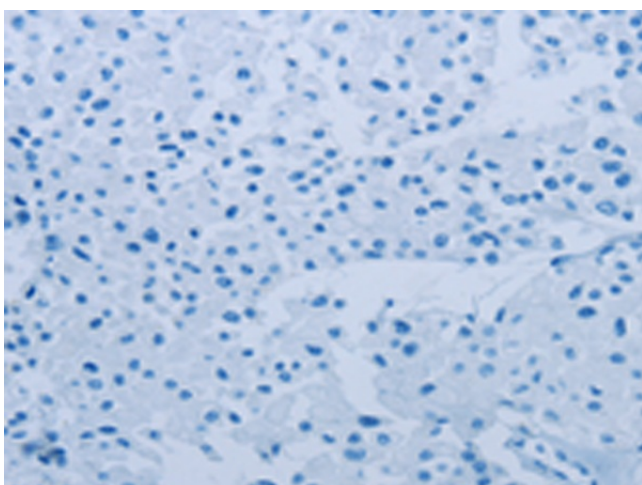
| | |
|-----------------------|---|
| Product Type: | Primary Antibodies |
| Applications: | IHC |
| Recommended Dilution: | IHC: 50-200 Positive control: Human prostate cancer Predicted cell location: Cytoplasm |
| Reactivity: | Human |
| Host: | Rabbit |
| Isotype: | IgG |
| Clonality: | Polyclonal |
| Immunogen: | Fusion protein of human GBP5 |
| Formulation: | pH7.4 PBS, 0.05% NaN ₃ , 40% Glycerol |
| Purification: | Antigen affinity purification |
| Conjugation: | Unconjugated |
| Storage: | Store at -20°C. |
| Stability: | 1 year |
| Gene Name: | guanylate binding protein 5 |
| Database Link: | Entrez Gene 115362 Human Q96PP8 |
| Background: | GBP5 (guanylate binding protein 5), also known as GBP-TA antigen, is a 586 amino acid protein that localizes to the cytoplasmic side of the cell membrane. Belonging to the interferon (IFN)-inducible guanylate-binding protein (GBP) family, GBP5 may be involved in the inflammatory response or with cell proliferation and is suggested to have possible cancer-related functions. The gene encoding GBP5 maps to human chromosome 1, which spans 260 million base pairs, contains over 3,000 genes and comprises nearly 8% of the human genome. |
| Synonyms: | GBP-5 |



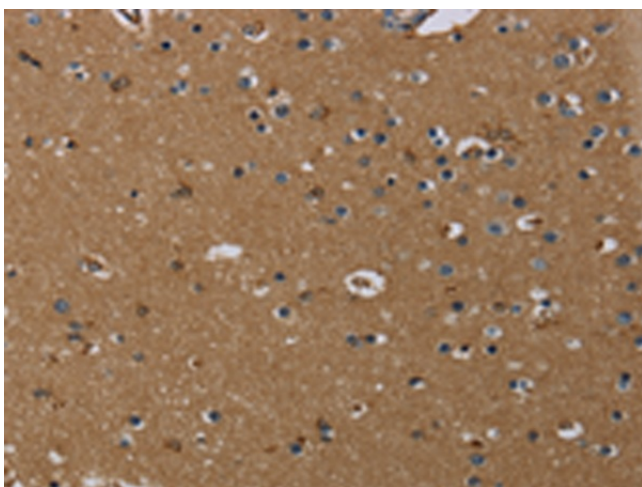
[View online »](#)

Product images:

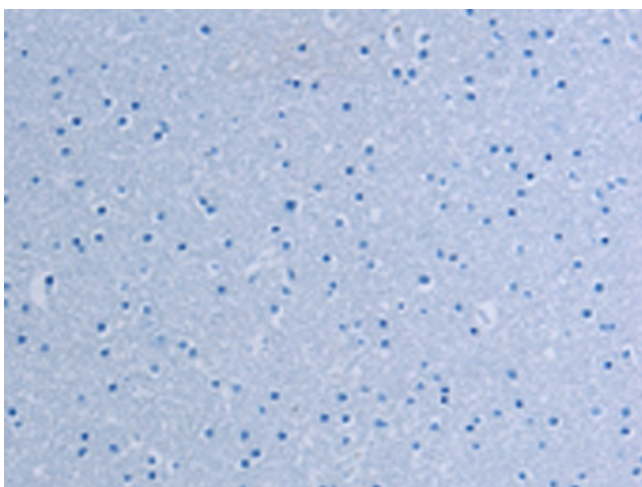
Immunohistochemistry of paraffin-embedded Human prostate cancer tissue using [TA364814] (GBP5 Antibody) at dilution 1/40 (Original magnification: $\times 200$)



Immunohistochemistry of paraffin-embedded Human prostate cancer tissue using [TA364814] (GBP5 Antibody) at dilution 1/40, treated with fusion protein. (Original magnification: $\times 200$)



Immunohistochemistry of paraffin-embedded Human brain tissue using [TA364814] (GBP5 Antibody) at dilution 1/40 (Original magnification: ×200)



Immunohistochemistry of paraffin-embedded Human brain tissue using [TA364814] (GBP5 Antibody) at dilution 1/40, treated with fusion protein. (Original magnification: ×200)