

Product datasheet for **TA364804S**

FKBP38 (FKBP8) Rabbit Polyclonal Antibody

Product data:

| | |
|-------------------------|---|
| Product Type: | Primary Antibodies |
| Applications: | WB |
| Recommended Dilution: | WB: 500-2000 WB positive control: Mouse heart tissue |
| Reactivity: | Human, Mouse, Rat |
| Host: | Rabbit |
| Isotype: | IgG |
| Clonality: | Polyclonal |
| Immunogen: | Fusion protein of human FKBP8 |
| Formulation: | pH7.4 PBS, 0.05% NaN ₃ , 40% Glycerol |
| Purification: | Antigen affinity purification |
| Conjugation: | Unconjugated |
| Storage: | Store at -20°C. |
| Stability: | 1 year |
| Predicted Protein Size: | 45 kDa |
| Gene Name: | FK506 binding protein 8 |
| Database Link: | Entrez Gene 23770 Human Q14318 |

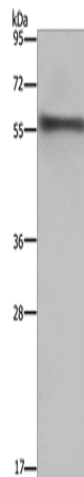
Background: The protein encoded by this gene is a member of the immunophilin protein family, which play a role in immunoregulation and basic cellular processes involving protein folding and trafficking. Unlike the other members of the family, this encoded protein does not seem to have PPlase/rotamase activity. It may have a role in neurons associated with memory function.

Synonyms: FKBP38; FKBP38; hFKBP38; PPlase; Rotamase



[View online »](#)

Product images:



Gel: 8%SDS-PAGE
Lysate: 40 μ g
Lane: Mouse heart tissue
Primary antibody: [TA364804] (FKBP8 Antibody)
at dilution 1/1000
Secondary antibody: Goat anti rabbit IgG at
1/8000 dilution
Exposure time: 1 minute