

## Product datasheet for **TA364790S**

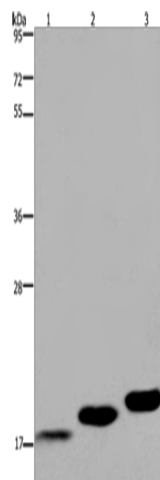
### MYL12B Rabbit Polyclonal Antibody

#### Product data:

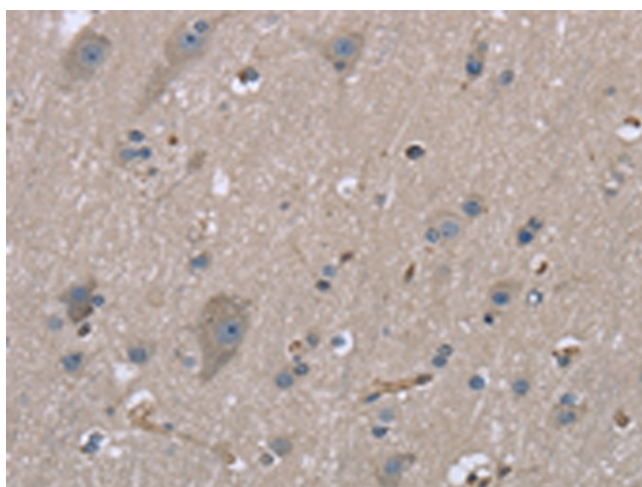
Product Type:	Primary Antibodies
Applications:	IHC, WB
Recommended Dilution:	WB: 500-2000 WB positive control: Mouse skeletal muscle, heart and bladder tissue IHC: 25-100 Positive control: Human brain Predicted cell location: Cytoplasm
Reactivity:	Human, Mouse, Rat
Host:	Rabbit
Isotype:	IgG
Clonality:	Polyclonal
Immunogen:	Fusion protein of human MYL12B
Formulation:	pH7.4 PBS, 0.05% NaN <sub>3</sub> , 40% Glycerol
Purification:	Antigen affinity purification
Conjugation:	Unconjugated
Storage:	Store at -20°C.
Stability:	1 year
Predicted Protein Size:	20 kDa
Gene Name:	myosin light chain 12B
Database Link:	<a href="#">Entrez Gene 103910 Human O14950</a>
Background:	The activity of nonmuscle myosin II (see MYH9; MIM 160775) is regulated by phosphorylation of a regulatory light chain, such as MRLC2. This phosphorylation results in higher MgATPase activity and the assembly of myosin II filaments
Synonyms:	MLC-2; MLC-2A; MLC-B; MLC20; MRLC2; MYLC2B; OTTHUMP00000165808; SHUJUN-1



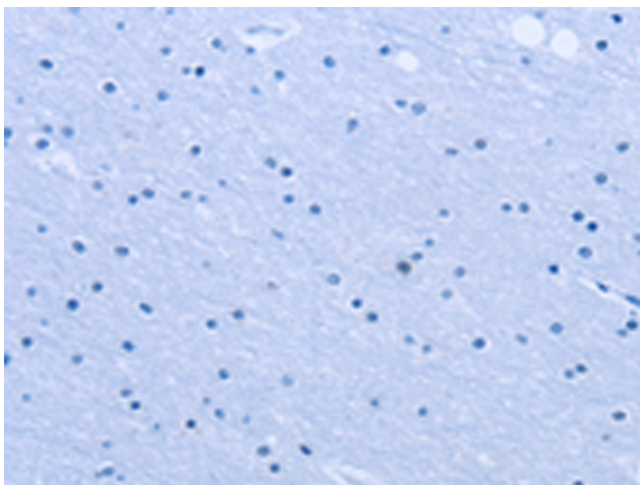
[View online »](#)

**Product images:**

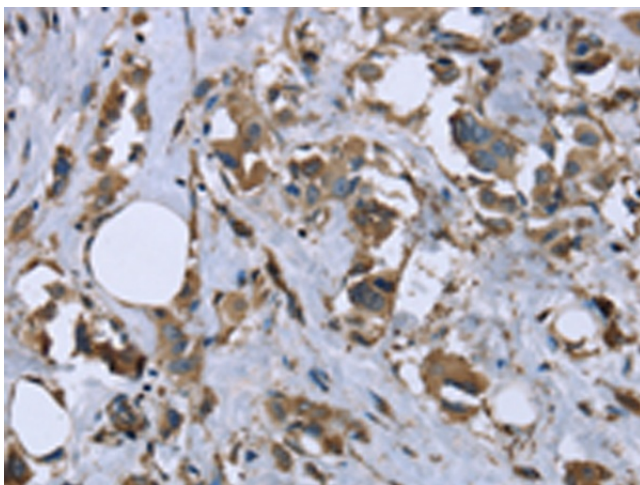
Gel: 8%SDS-PAGE  
Lysate: 40 µg  
Lane 1-3: Mouse skeletal muscle  
Mouse heart tissue  
Mouse bladder tissue  
Primary antibody: [TA364790] (MYL12B Antibody)  
at dilution 1/450  
Secondary antibody: Goat anti rabbit IgG at  
1/8000 dilution  
Exposure time: 20 seconds



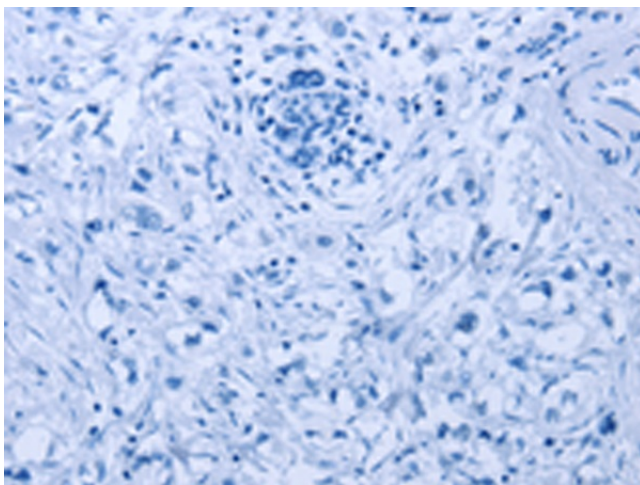
Immunohistochemistry of paraffin-embedded  
Human brain tissue using [TA364790] (MYL12B  
Antibody) at dilution 1/20 (Original magnification:  
×200)



Immunohistochemistry of paraffin-embedded Human brain tissue using [TA364790] (MYL12B Antibody) at dilution 1/20, treated with fusion protein. (Original magnification:  $\times 200$ )



Immunohistochemistry of paraffin-embedded Human breast cancer tissue using [TA364790] (MYL12B Antibody) at dilution 1/20 (Original magnification:  $\times 200$ )



Immunohistochemistry of paraffin-embedded Human breast cancer tissue using [TA364790] (MYL12B Antibody) at dilution 1/20, treated with fusion protein. (Original magnification:  $\times 200$ )