

Product datasheet for **TA364790**

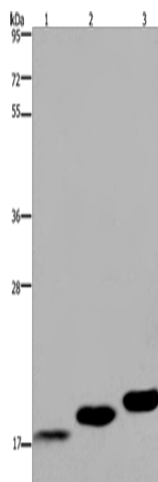
MYL12B Rabbit Polyclonal Antibody

Product data:

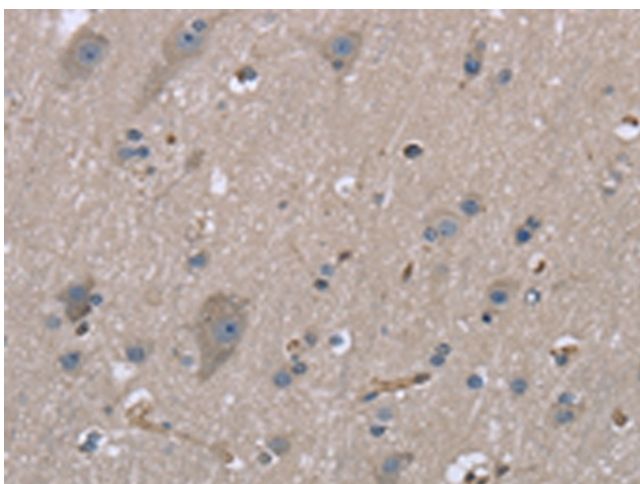
Product Type:	Primary Antibodies
Applications:	IHC, WB
Recommended Dilution:	WB: 500-2000 WB positive control: Mouse skeletal muscle, heart and bladder tissue IHC: 25-100 Positive control: Human brain Predicted cell location: Cytoplasm
Reactivity:	Human, Mouse, Rat
Host:	Rabbit
Isotype:	IgG
Clonality:	Polyclonal
Immunogen:	Fusion protein of human MYL12B
Formulation:	pH7.4 PBS, 0.05% NaN ₃ , 40% Glycerol
Concentration:	lot specific
Purification:	Antigen affinity purification
Conjugation:	Unconjugated
Storage:	Store at -20°C.
Stability:	1 year
Predicted Protein Size:	20 kDa
Gene Name:	myosin light chain 12B
Database Link:	Entrez Gene 103910 Human O14950
Background:	The activity of nonmuscle myosin II (see MYH9; MIM 160775) is regulated by phosphorylation of a regulatory light chain, such as MRLC2. This phosphorylation results in higher MgATPase activity and the assembly of myosin II filaments
Synonyms:	MLC-2; MLC-2A; MLC-B; MLC20; MRLC2; MYLC2B; OTTHUMP00000165808; SHUJUN-1



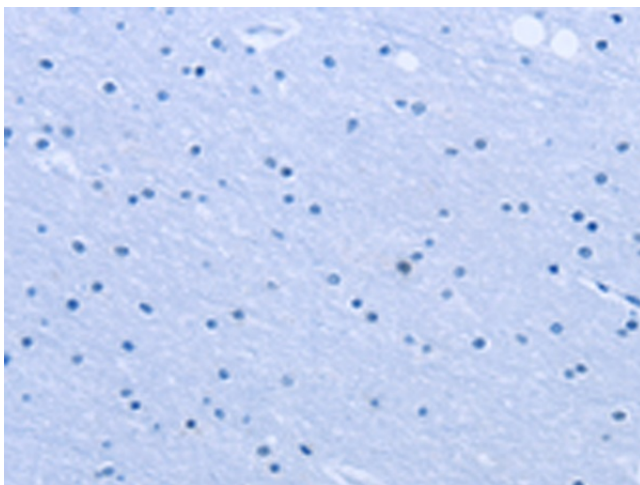
[View online »](#)

Product images:

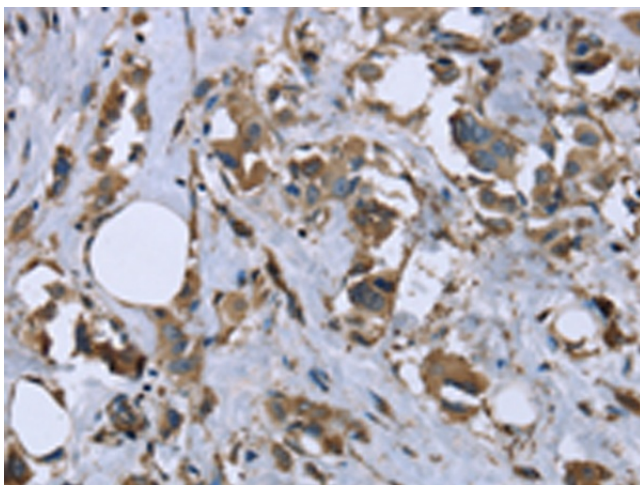
Gel: 8%SDS-PAGE
Lysate: 40 μ g
Lane 1-3: Mouse skeletal muscle
Mouse heart tissue
Mouse bladder tissue
Primary antibody: TA364790 (MYL12B Antibody)
at dilution 1/450
Secondary antibody: Goat anti rabbit IgG at
1/8000 dilution
Exposure time: 20 seconds



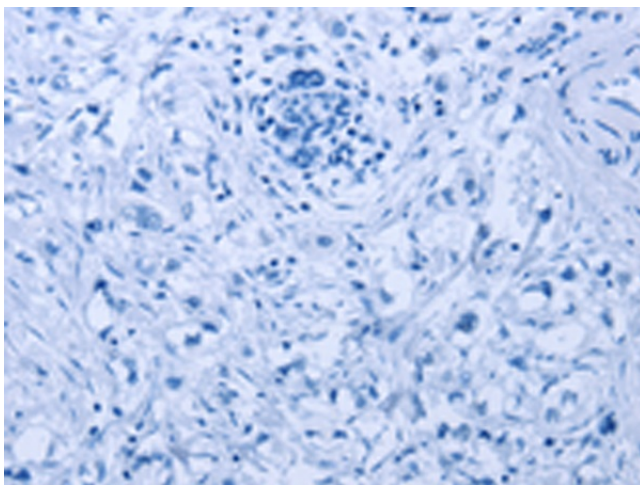
Immunohistochemistry of paraffin-embedded
Human brain tissue using TA364790 (MYL12B
Antibody) at dilution 1/20 (Original magnification:
 \times 200)



Immunohistochemistry of paraffin-embedded Human brain tissue using TA364790 (MYL12B Antibody) at dilution 1/20, treated with fusion protein. (Original magnification: $\times 200$)



Immunohistochemistry of paraffin-embedded Human breast cancer tissue using TA364790 (MYL12B Antibody) at dilution 1/20 (Original magnification: $\times 200$)



Immunohistochemistry of paraffin-embedded Human breast cancer tissue using TA364790 (MYL12B Antibody) at dilution 1/20, treated with fusion protein. (Original magnification: $\times 200$)