

Product datasheet for **TA364788**

FANCF Rabbit Polyclonal Antibody

Product data:

Product Type:	Primary Antibodies
Applications:	IHC
Recommended Dilution:	IHC: 100-300 Positive control: Human cervical cancer Predicted cell location: Nucleus
Reactivity:	Human
Host:	Rabbit
Isotype:	IgG
Clonality:	Polyclonal
Immunogen:	Fusion protein of human FANCF
Formulation:	pH7.4 PBS, 0.05% NaN ₃ , 40% Glycerol
Concentration:	lot specific
Purification:	Antigen affinity purification
Conjugation:	Unconjugated
Storage:	Store at -20°C.
Stability:	1 year
Gene Name:	Fanconi anemia complementation group F
Database Link:	Entrez Gene 2188 Human Q9NPI8

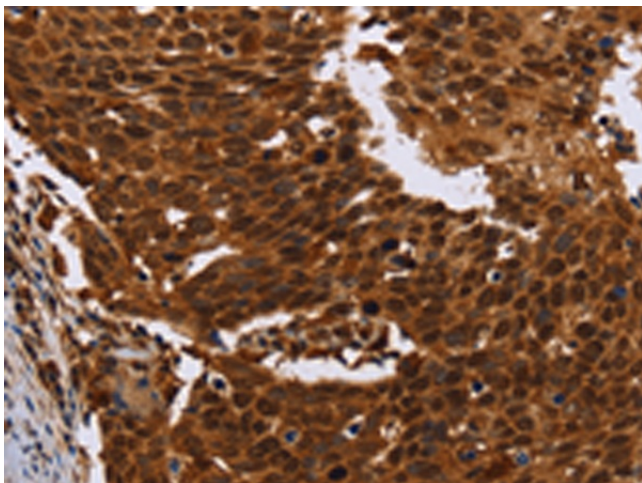
Background: The Fanconi anemia complementation group (FANC) currently includes FANCA, FANCB, FANCC, FANCD1 (also called BRCA2), FANCD2, FANCE, FANCF, FANCG, FANCI, FANCI (also called BRIP1), FANCL, FANCM and FANCN (also called PALB2). The previously defined group FANCH is the same as FANCA. Fanconi anemia is a genetically heterogeneous recessive disorder characterized by cytogenetic instability, hypersensitivity to DNA crosslinking agents, increased chromosomal breakage, and defective DNA repair. The members of the Fanconi anemia complementation group do not share sequence similarity; they are related by their assembly into a common nuclear protein complex. This gene encodes the protein for complementation group F.



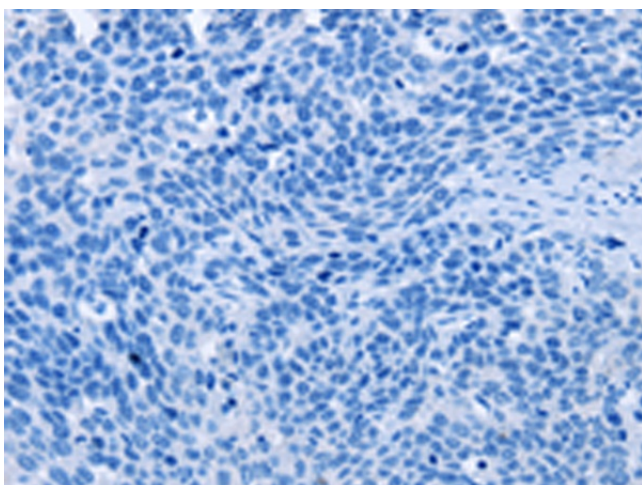
[View online »](#)

Synonyms: FAF; MGC126856

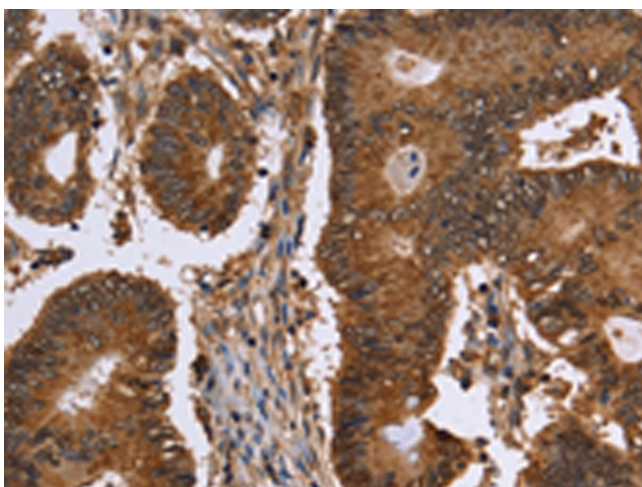
Product images:



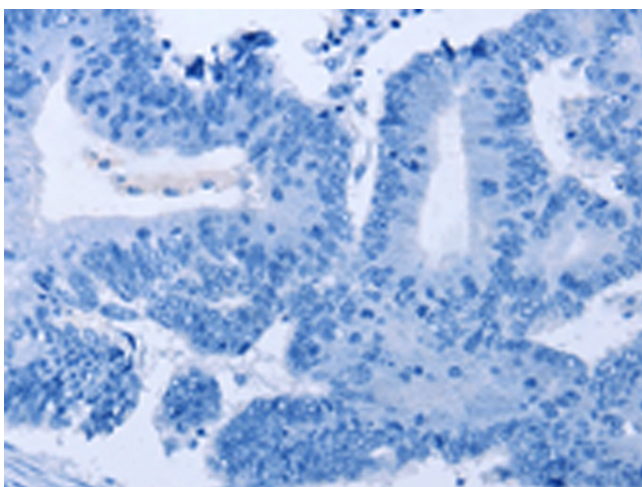
Immunohistochemistry of paraffin-embedded Human cervical cancer tissue using TA364788 (FANCF Antibody) at dilution 1/60 (Original magnification: x200)



Immunohistochemistry of paraffin-embedded Human cervical cancer tissue using TA364788 (FANCF Antibody) at dilution 1/60, treated with fusion protein. (Original magnification: x200)



Immunohistochemistry of paraffin-embedded Human colon cancer tissue using TA364788 (FANCF Antibody) at dilution 1/60 (Original magnification: $\times 200$)



Immunohistochemistry of paraffin-embedded Human colon cancer tissue using TA364788 (FANCF Antibody) at dilution 1/60, treated with fusion protein. (Original magnification: $\times 200$)