

## Product datasheet for **TA364782S**

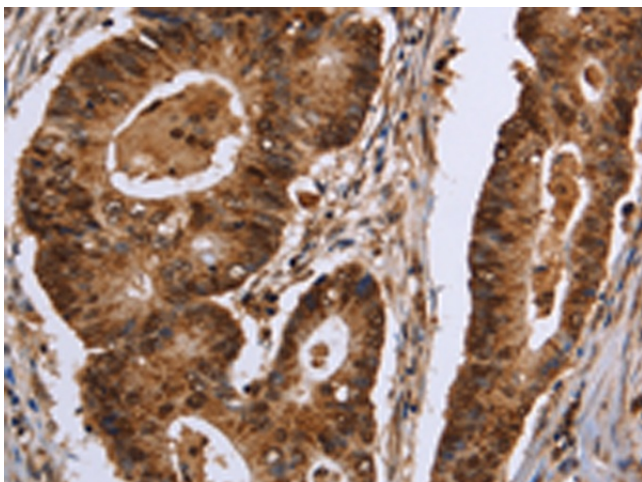
### EXTL3 Rabbit Polyclonal Antibody

#### Product data:

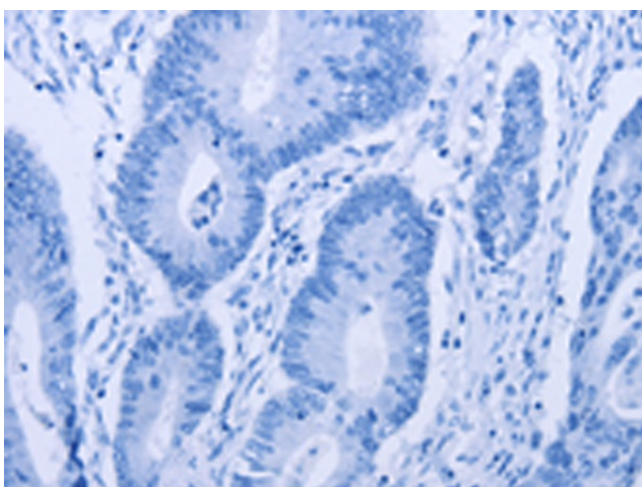
|                       |                                                                                                                                                                                                                                                                                                                                  |
|-----------------------|----------------------------------------------------------------------------------------------------------------------------------------------------------------------------------------------------------------------------------------------------------------------------------------------------------------------------------|
| Product Type:         | Primary Antibodies                                                                                                                                                                                                                                                                                                               |
| Applications:         | IHC                                                                                                                                                                                                                                                                                                                              |
| Recommended Dilution: | IHC: 50-200<br>Positive control: Human colon cancer<br>Predicted cell location: Nucleus and Cytoplasm                                                                                                                                                                                                                            |
| Reactivity:           | Human, Mouse                                                                                                                                                                                                                                                                                                                     |
| Host:                 | Rabbit                                                                                                                                                                                                                                                                                                                           |
| Isotype:              | IgG                                                                                                                                                                                                                                                                                                                              |
| Clonality:            | Polyclonal                                                                                                                                                                                                                                                                                                                       |
| Immunogen:            | Fusion protein of human EXTL3                                                                                                                                                                                                                                                                                                    |
| Formulation:          | pH7.4 PBS, 0.05% NaN <sub>3</sub> , 40% Glycerol                                                                                                                                                                                                                                                                                 |
| Purification:         | Antigen affinity purification                                                                                                                                                                                                                                                                                                    |
| Conjugation:          | Unconjugated                                                                                                                                                                                                                                                                                                                     |
| Storage:              | Store at -20°C.                                                                                                                                                                                                                                                                                                                  |
| Stability:            | 1 year                                                                                                                                                                                                                                                                                                                           |
| Gene Name:            | exostosin like glycosyltransferase 3                                                                                                                                                                                                                                                                                             |
| Database Link:        | <a href="#">Entrez Gene 2137 Human O43909</a>                                                                                                                                                                                                                                                                                    |
| Background:           | This gene encodes a single-pass membrane protein which functions as a glycosyltransferase. The encoded protein catalyzes the transfer of N-acetylglucosamine to glycosaminoglycan chains. This reaction is important in heparin and heparan sulfate synthesis. Alternative splicing results in the multiple transcript variants. |
| Synonyms:             | BOTV; DKFZp686C2342; EXTL1L; EXTR1; KIAA0519; REG; REGR; RPR                                                                                                                                                                                                                                                                     |



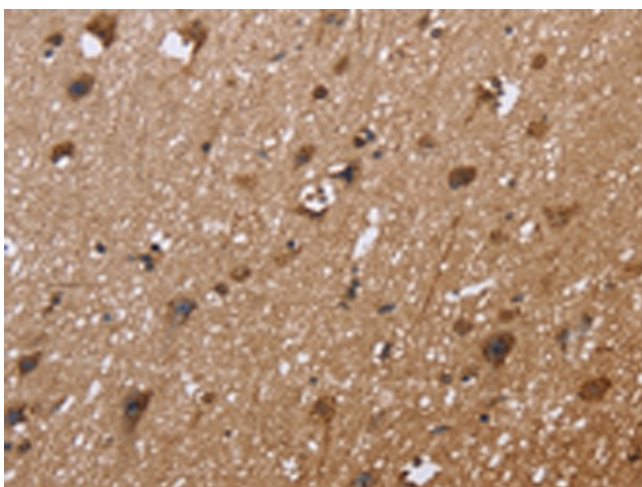
[View online »](#)

**Product images:**

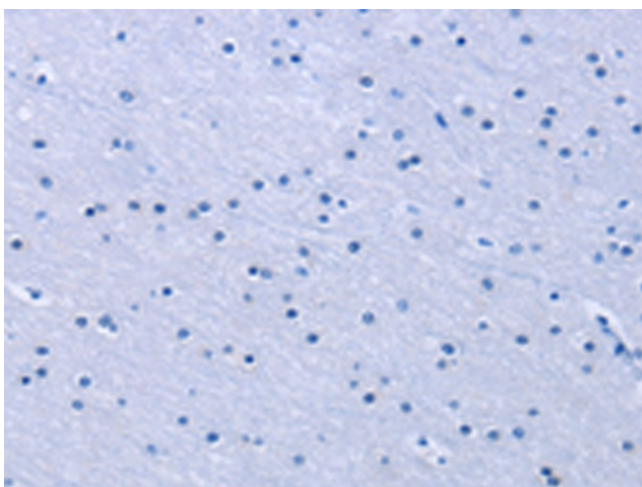
Immunohistochemistry of paraffin-embedded Human colon cancer tissue using [TA364782] (EXTL3 Antibody) at dilution 1/30 (Original magnification:  $\times 200$ )



Immunohistochemistry of paraffin-embedded Human colon cancer tissue using [TA364782] (EXTL3 Antibody) at dilution 1/30, treated with fusion protein. (Original magnification:  $\times 200$ )



Immunohistochemistry of paraffin-embedded Human brain tissue using [TA364782] (EXTL3 Antibody) at dilution 1/30 (Original magnification: ×200)



Immunohistochemistry of paraffin-embedded Human brain tissue using [TA364782] (EXTL3 Antibody) at dilution 1/30, treated with fusion protein. (Original magnification: ×200)