

Product datasheet for **TA364772**

ELMO1 Rabbit Polyclonal Antibody

Product data:

Product Type:	Primary Antibodies
Applications:	IHC, WB
Recommended Dilution:	WB: 500-2000 WB positive control: RAW264.7 cell lysate IHC: 50-200 Positive control: Human prostate cancer Predicted cell location: Cytoplasm
Reactivity:	Human, Mouse
Host:	Rabbit
Isotype:	IgG
Clonality:	Polyclonal
Immunogen:	Fusion protein of human ELMO1
Formulation:	pH7.4 PBS, 0.05% NaN ₃ , 40% Glycerol
Concentration:	lot specific
Purification:	Antigen affinity purification
Conjugation:	Unconjugated
Storage:	Store at -20°C.
Stability:	1 year
Predicted Protein Size:	84 kDa
Gene Name:	engulfment and cell motility 1
Database Link:	Entrez Gene 9844 Human Q92556

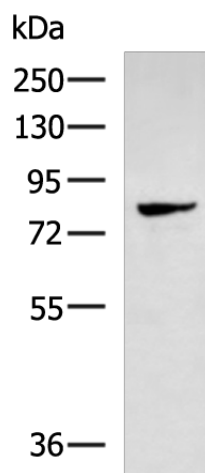
Background: This gene encodes a member of the engulfment and cell motility protein family. These proteins interact with dedicator of cytokinesis proteins to promote phagocytosis and cell migration. Increased expression of this gene and dedicator of cytokinesis 1 may promote glioma cell invasion, and single nucleotide polymorphisms in this gene may be associated with diabetic nephropathy. Alternative splicing results in multiple transcript variants.



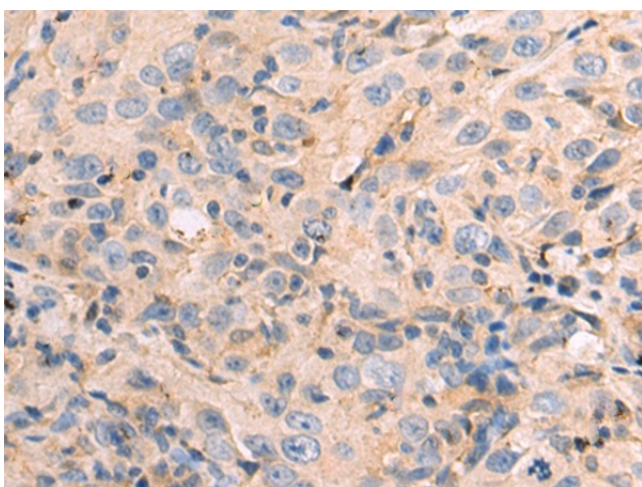
[View online »](#)

Synonyms: CED-12; CED12; ELMO-1; KIAA0281; MGC126406; OTTHUMP00000207056; OTTHUMP00000207060

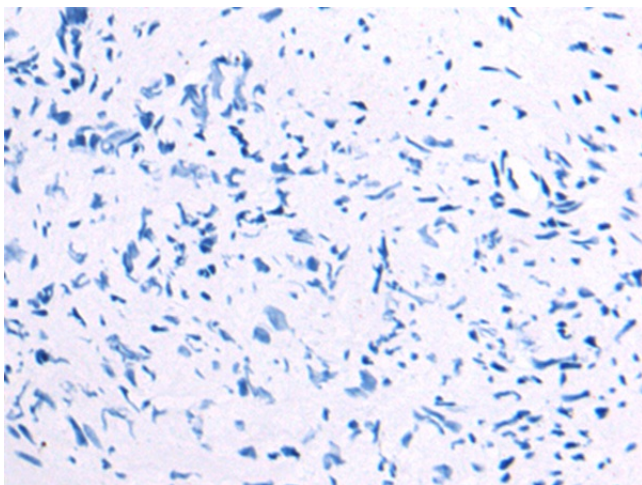
Product images:



Gel: 8%SDS-PAGE
Lysate: 40 µg
Lane: RAW264.7 cell lysate
Primary antibody: TA364772 (ELMO1 Antibody) at dilution 1/600
Secondary antibody: Goat anti rabbit IgG at 1/5000 dilution
Exposure time: 3 minutes



Immunohistochemistry of paraffin-embedded Human prostate cancer tissue using TA364772 (ELMO1 Antibody) at dilution 1/55 (Original magnification: ×200)



Immunohistochemistry of paraffin-embedded Human prostate cancer tissue using TA364772 (ELMO1 Antibody) at dilution 1/55, treated with fusion protein. (Original magnification: $\times 200$)