

Product datasheet for **TA364768S**

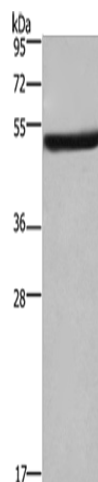
EIF3F Rabbit Polyclonal Antibody

Product data:

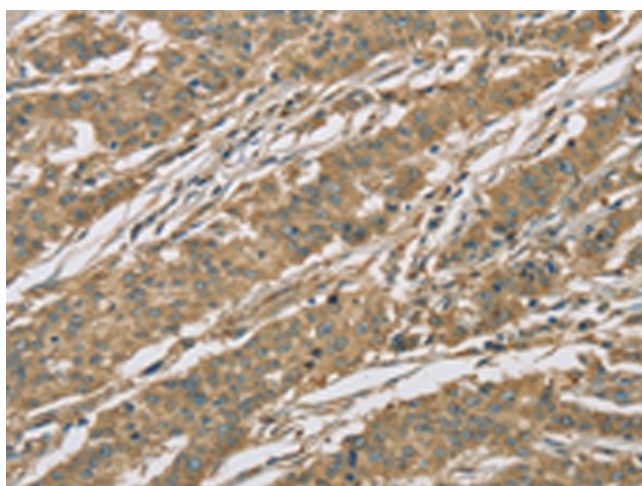
Product Type:	Primary Antibodies
Applications:	IHC, WB
Recommended Dilution:	WB: 200-1000 WB positive control: Mouse kidney tissue IHC: 50-200 Positive control: Human gastric cancer Predicted cell location: Cytoplasm
Reactivity:	Human, Mouse
Host:	Rabbit
Isotype:	IgG
Clonality:	Polyclonal
Immunogen:	Fusion protein of human EIF3F
Formulation:	pH7.4 PBS, 0.05% NaN ₃ , 40% Glycerol
Purification:	Antigen affinity purification
Conjugation:	Unconjugated
Storage:	Store at -20°C.
Stability:	1 year
Predicted Protein Size:	38 kDa
Gene Name:	eukaryotic translation initiation factor 3 subunit F
Database Link:	Entrez Gene 8665 Human O00303
Background:	Eukaryotic translation initiation factor 3 subunit F is a protein that in humans is encoded by the EIF3F gene. The eIF-3 complex stimulates mRNA recruitment to the 43S PIC and scanning of the mRNA for AUG recognition. The eIF-3 complex is also required for disassembly and recycling of post-termination ribosomal complexes and subsequently prevents premature joining of the 40S and 60S ribosomal subunits prior to initiation.
Synonyms:	eIF-3-epsilon; eIF3-epsilon; eIF3-p47; EIF3S5



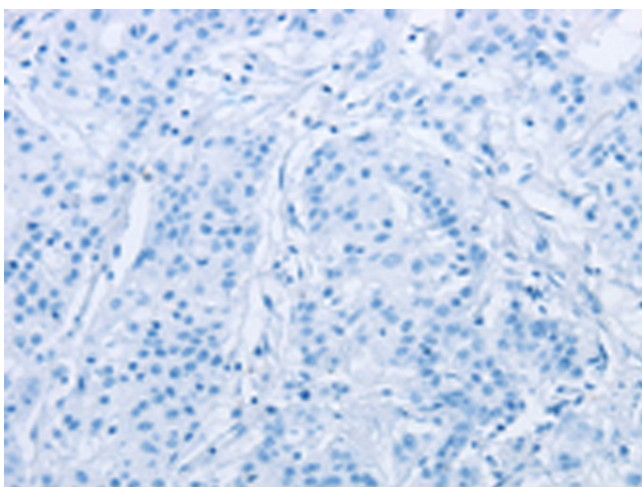
[View online »](#)

Product images:

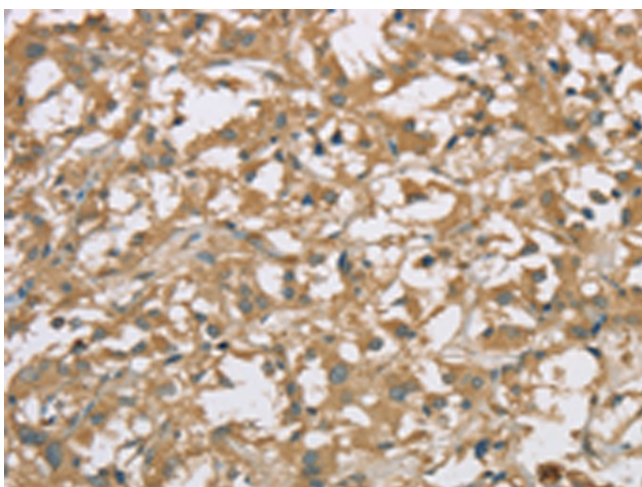
Gel: 8%SDS-PAGE
Lysate: 40 μ g
Lane: Mouse kidney tissue
Primary antibody: [TA364768] (EIF3F Antibody) at dilution 1/300
Secondary antibody: Goat anti rabbit IgG at 1/8000 dilution
Exposure time: 2 minutes



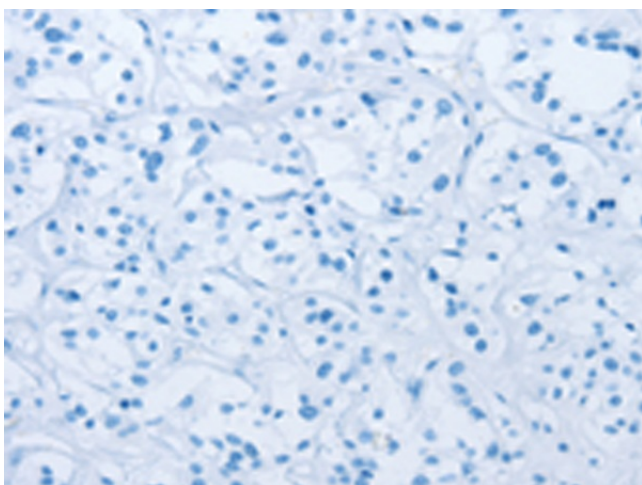
Immunohistochemistry of paraffin-embedded Human gastric cancer tissue using [TA364768] (EIF3F Antibody) at dilution 1/25 (Original magnification: \times 200)



Immunohistochemistry of paraffin-embedded Human gastric cancer tissue using [TA364768] (EIF3F Antibody) at dilution 1/25, treated with fusion protein. (Original magnification: $\times 200$)



Immunohistochemistry of paraffin-embedded Human thyroid cancer tissue using [TA364768] (EIF3F Antibody) at dilution 1/25 (Original magnification: $\times 200$)



Immunohistochemistry of paraffin-embedded Human thyroid cancer tissue using [TA364768] (EIF3F Antibody) at dilution 1/25, treated with fusion protein. (Original magnification: $\times 200$)