

Product datasheet for **TA364764**

EEF1AKMT4 Rabbit Polyclonal Antibody

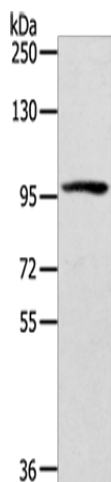
Product data:

Product Type:	Primary Antibodies
Applications:	IHC, WB
Recommended Dilution:	WB: 200-1000 WB positive control: Mouse kidney tissue IHC: 25-100 Positive control: Human lung cancer Predicted cell location: Cytoplasm and Nucleus
Reactivity:	Human, Mouse
Host:	Rabbit
Isotype:	IgG
Clonality:	Polyclonal
Immunogen:	Fusion protein of human EEF1AKMT4
Formulation:	pH7.4 PBS, 0.05% NaN ₃ , 40% Glycerol
Concentration:	lot specific
Purification:	Antigen affinity purification
Conjugation:	Unconjugated
Storage:	Store at -20°C.
Stability:	1 year
Predicted Protein Size:	100 kDa
Gene Name:	EEF1A lysine methyltransferase 4
Database Link:	P0DPD7
Background:	This gene encodes a member of the lysine-specific methyltransferase (KMT) family. The encoded enzyme catalyzes the methylation of lysine-36 of the eukaryotic translation elongation factor 1 alpha. Methylation by this enzyme may affect endoplasmic reticulum-related processes.

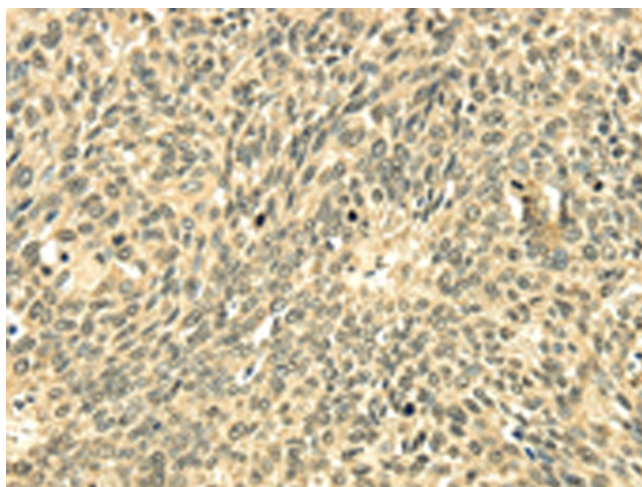


[View online »](#)

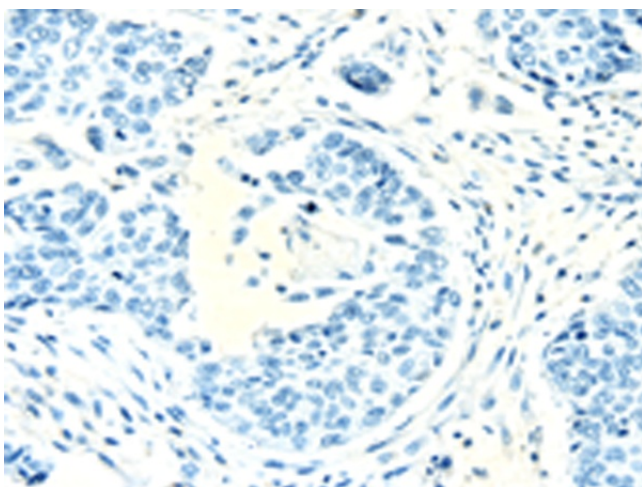
Product images:



Gel: 6%SDS-PAGE
Lysate: 40 μ g
Lane: Mouse kidney tissue
Primary antibody: TA364764 (EEF1AKMT4 Antibody) at dilution 1/300
Secondary antibody: Goat anti rabbit IgG at 1/8000 dilution
Exposure time: 3 minutes



Immunohistochemistry of paraffin-embedded Human lung cancer tissue using TA364764 (EEF1AKMT4 Antibody) at dilution 1/20 (Original magnification: \times 200)



Immunohistochemistry of paraffin-embedded Human lung cancer tissue using TA364764 (EEF1AKMT4 Antibody) at dilution 1/20, treated with fusion protein. (Original magnification: ×200)